

Canine News

Official publication of the Canine Association of WA



TIMES ARE CHANGING. OUR COMMITMENT TO QUALITY ISN'T.



Precisely tailored to the specific
nutritional needs of dogs.



We never compromise on the precision of our formulas. We know from science and observation that each dog has different needs, especially when it comes to breeding and raising healthy puppies.

This is why our nutrition is precisely tailored down to the gram and why we will continue to create ever-more individualised products and services.

**JUNE BREEDERS CLUB PROMOTION:
15% OFF ALL CANINE CARE NUTRITION DIETS***

Enjoy this and other exclusive promotions when you join the ROYAL CANIN® Breeders Club. Visit: royalcanin.com/au

Address

602 Warton Road, Southern River WA 6110

PHONE: (08) 9455 1188
E-MAIL: k9@dogswest.com
WEB: www.dogswest.com
OFFICE HOURS: 9am to 5pm (Mon - Wed, Fri)
 10am to 5pm (Thurs)
PHONE ENQUIRIES: 9am to 4pm (Mon-Fri)
Editor: Ms M Norton

Governing Council

Our councillors welcome your calls between 7.30pm and 9pm.

President

Elected to August 2024 Ms P Campbell president@dogswest.com

Vice President

Elected to August 2023 Mr D Kehoe vicepresident@dogswest.com

Councillors

Elected to August 2025
 Mr R Shellback 0411 784 603
 Mr M Wellock Via Office
 Mr P Primrose 0430 839 074

Elected to August 2024
 Mrs P Kelly 0412 277 113
 Mrs C Storrs 0488 025 067
 Mr P Boekelman 0421 246 522

Elected to August 2023
 Mrs H Jones 0457 148 838
 Mrs S Baxter 0417 941 727
 Dr J Logan 9453 9637

Deputies

Elected to August 2023
 Ms A Rushby 9455 1324
 Miss R Hawkins 0478 403 016
 Mrs J Sach 0409 840 808

Editorial Policy The Editor reserves the right to withhold publication of any material whatsoever. Views and opinions expressed in this magazine are those of the correspondents and contributors, and not necessarily those of the Editor, Dogs West, the printers or other contributors. Dogs West will not accept anything that is poorly written, offensive or defamatory in tone or nature and will reject subject matter which is deemed to be as not in the best interest of the Association, its policies or Code of Ethics. All material is accepted in good faith and the accuracy of the contents of any material submitted is the responsibility of the contributor. Names and addresses of contributors may be withheld from publication on request but must be supplied. While every effort is made to ensure that all material is reproduced correctly, Dogs West accept no responsibility for any error.

copy closing date

JULY / AUGUST 2023 issue of the
 Canine News will be at 5pm on 15TH MAY 2023
 Payment must accompany all advertising copy.

Contents

Advised by Dogs Australia	3
Annual General Meeting	3
CEO Report	2
Club Notices.....	2
Dogs West Top Show Dog	3
President's Report.....	2
Schedules	11 - 24
Western Classic Performance.....	4-6

Front Cover

'Bon'

Sup. Ch Karlyermai Gotta Bea Rokstar

We are very proud and pleased to have Bon, our own Rokstar awarded WATDSC Top Toy for 2022.

At only 4 years of age he has continued to follow on from the legacy of his forefathers, He is a Multiple Best in Show Winner, both here and interstate and the 2nd youngest Supreme Champion Australian Silky Terrier on record, all achieved during the COVID years.

Cover Photo: Jodie Grieve





We are post another fabulous Western Classic and Open Day. Once again, the volunteers stole the show with their passion and efforts to run quality events. Open Day trialed improved signage and social media content as part of our commitment to continuous improvement, communicating more broadly to the public and reaching potential members.

I have noticed the entries to events have been consistently lower than pre-COVID days which isn't a surprise considering the increases in the cost of living affecting our members. The lower entries, together with a consistently stable membership numbers (ie no growth) continues to impact Dogs West bottom line.

Just as members are finding ways to save, or where to generate extra income, I am working on providing advice to Governing Council to consider the same. Diversifying Dogs West products and services has never been more important.

Fortunately, we have funds to invest in new initiatives, however our current reserves are there to ensure our buildings and grounds are maintained and renovations or upgrades occur as required.

It is both exciting and scary as we enter these uncertain times. Keeping this delicate balance of minimising costs but investing in the activities that ensure a prosperous future is one that I look forward to progressing with Governing Council.

Marzel Norton, Chief Executive Officer

President Report



Thank you to the working parties of the Western Classic weekend and the Open Day for outstanding events. And a shout out to all the Members who volunteered in any way to make these events so successful and a showcase for our Dogs and all the activities Dogs West offers. In her CEO report Marzel has mentioned lower entries at events in recent time, with Puppy registrations also down, particularly in relation to numbers during Covid.

Both of these impact on the income stream for Dogs West, and are just a couple of the factors that Governing Council is considering, together with advice from the CEO on operational costs, to identify where likely increases will occur to formulate the budget for next financial year.

The aim is always to run as cost effectively as possible, whilst maintaining services and amenity. With increasing costs, some charge increases will have to occur, given that there was no increase during the pandemic as a result of the support from the Government Covid payment scheme.

As our CEO has noted, Dogs West does have Reserves invested, some of which will be expended once development commences on the corner property, leading to expenditure on roadworks, parking, entry statement and ground fencing.

Governing Council is aware of cost of living pressures with rising inflation being felt in the community, but also of their responsibility to ensure the financial stability of the Association for the Members.

Broader challenges are being faced across the pure-bred dog fraternity in Australia, with crucial State Elections and reviews of Government Dog Regulations in many States underway now. Any opportunity to promote the benefits of dog ownership and the importance of demonstrated high standards of care when keeping and breeding them, has never been more important.

Pamela Campbell, President

Amended Dogs West Regulations

November 2022

HM2 2.20

Amended to read:

A member shall not breed a bitch causing it to whelp more than twice in any eighteen month period.

HM2 2.22 – Maximum Breeding Age

Amended to read:

2.22.1 A member shall not mate a bitch over the age of seven (7) years.

Note: after the bitch's seventh birthday.

2.22.2 Extenuating Circumstances

2.22.2.1 A member may apply to Dogs West for permission to mate a bitch over seven years of age.

The application is to include:

- a veterinary certification of fitness for further breeding issued in the last 30 days
- the positive identification of the bitch – microchip
- reasons for the need for a litter from a bitch of this age

2.22.2.2 The member must have obtained written permission PRIOR to mating the bitch

2.22.2.3 The permission is valid for a period of six months – after this permission must be re-applied for.

2.22.2.4 Under no circumstances will permission for a further litter be granted.

February 2023

HM2 2.21 – Number of Litters, amended to read:

2.21 Number of Litters

2.21.1 A member shall not breed a bitch causing it to whelp more than five (5) times.

2.21.2 It is the responsibility of the current registered owner to verify the number of litters a bitch may have had prior to their ownership of said bitch.

Governance determinations

7/02/2023

- Mrs T Prall - 'NYRANDA WAY OUT WEST' - Reg No 6100115477 – Guilty of an aggressive act. 4 month suspension & \$200 penalty.

14/03/2023

- Ms M Radomiljac – Guilty of breach of HM2.19. Penalty of \$250 plus \$100 per puppy.

Review of the Rules for the Conduct of Lure Coursing Trials

Dogs Australia are proposing a Rule Review for Lure Coursing with any new rules becoming effective 1st January 2025.

We are requesting submissions for any Rule changes to be emailed to the Lure Coursing Working Party by 31 August 2023 – Danielle.m.simpson@outlook.com



November 2022

Motions On Notice

- Amendments to CAWA Regulations HM2 2.20 and 2.22 (See Canine Notices for details)

January 2023

Motions On Notice

- CAWA Regulation B16.5.1 – Removal

February 2023

Motions On Notice

- CAWA Regulation B37.2.2 – Removal
- Amendments to CAWA Regulations HM2 2.21 (See Canine Notices for details)

Reports

Finance Committee

- Budget Preparation Discussion Paper
- Advanced Pet Care of Australia Sponsorship 12-month Contract (Cherish) accepted.
- Renewal of the Pet Shop license accepted and referred to Solicitor. Conditions remain the same.
- \$5,000 towards promotion leading up to the National Agility Trial approved.
- June 2023 Canine Fundraiser Budget (inclusive of baby entry income) accepted.
- Recommended applications 2023 Retrieving Trainee Judges Course accepted.
- Recommended applications 2023 Scent Work Trainee Judges Course accepted.
- State Tricks Test for 2023 proposal to run at State Rally and Obedience on the same weekend accepted.

General Business

- Stewards Course – 11 passes
- Western Classic – 23 stall holders, 68 sponsors.
- Dogs West Open Day – Sunday 2 April 2023. 25% up on vendors from last year.

DogsWest

TOPSHOWDOG 2022/23

Sup Ch Sennen Oops I Did It Again Bernese Mountain Dog	6950.5
Sup Ch Happybear Look Whos Talking (AI) Newfoundland	5244.5
Sup CH Staryanks Heir Apparent Cocker Spaniel (American)	2777
Ch Arjai Heart Of Glass Whippet	1371.5
Sup Ch Goldmaid Mind Games Welsh Springer Spaniel	1279.5
Ch Athalow Raining Aces Pekingese	1089
Sup Ch Blackboy Absolut Viktor (AI) Labrador	909.5
Sup Ch Karlyermai Gotta Bea Rokstar Australian Silky Terrier	890
Ch Happybear Mr Brytsyde (AI) Newfoundland	798
Sup Ch Kineta Take me To The Beach Lakeland Terrier	777.5



Advised by Dogs Australia

Amendment to Dogs Australia Regulations

- 7.5.3 Regulations Part 5 – Conformation Shows, Section 4: Exhibitors, Clause 4.1: Proprietary Interest

1.1.7 Definitions and Classes

Proprietary Interest – means having some legal or equitable interest in an animal on an on-going basis or the breeder of the exhibit. For the purposes of these Regulations the definition does not include using a Judge's stud dog or boarding a dog at a Judge's boarding kennel.

Be deleted.

AND for Section 4.1 Proprietary Interest to be amended as follows.

Section 4.1 Proprietary **Ownership** Interest as follows:

4.1.2 A person may not enter, exhibit or handle under a judge officiating at a conformation show where:

- The person is a member of the judge's family and/or resides at the same address as the judge.
- The judge has or has had any **proprietary ownership** interest in a dog or dogs solely or in partnership with the member within a period of 12 months prior to the conformation show.
- Where the judge has handled any dog owned, leased or part leased by the person within a period of 12 months prior to the conformation show.
- The person has handled any dog owned or part owned or leased, or part leased by the judge in a period of 12 months prior to the conformation show. The person has accommodated the judge or been accommodated by the judge within a period of 12 months prior to the conformation show or intends to accommodate the judge within 24 hours after the conformation show.
- The judge has trained or groomed for reward, for gift or favour a dog owned, or part owned, leased or part leased by the person in a period of 12 months prior to the conformation show.
- The dog was bred by the judge or the judge's family.
- For the purposes of these Regulations the definition "handled" does not include any circumstance where a person has assisted another exhibitor who, due to a judging decision on the day, was required to compete with two or more exhibits at the same time**
- Either the exhibitor or the judge has used a stud dog belonging to the other within the last 6 months.²

Other Notices

- CACIB Shows
Handling Dogs at CACIB Shows
There has been widespread discussion on the handling of dogs in the ring at CACIB Shows. Under the Dogs Australia Associate Agreement with the FCI, CACIB shows in Australia must be conducted under FCI Regulations, the relevant Regulations from both organisations are as follow:

Dogs Australia Regulations Part 5 Conformation Shows

Section 9.5.7 In accordance with the terms of the Associate Membership between Dogs Australia and FCI, all Dogs Australia CACIB Shows are to be conducted under FCI Regulations including group nomenclature and breed standards for the duration of the event.

FCI Regulations Part 12 Restrictions for judges at CACIB Shows

The dogs that a judge handles at an FCI-CACIB show where he is not acting as a judge must be either bred, owned, or co-owned by him, by a partner, by a member of his immediate family, or by any person living with him in his household.

- Registration Statistics 2018-2022
Available on Dogs Australia website
- FCI A20 Report and reporting requirements
Available on Dogs Australia website



WESTERN CLASSIC PERFORMANCE



Western Classic 2023 and the atmosphere was electric, the dogs superb and the sponsors amazing, congratulations to the committee for again show casing Dogs West and running an amazing event.

To Jill Houston thank-you for running three nights of amazing performance, the trophy table was amazing the organisation perfect, everything ran seamlessly and was a credit to you and your hard working stewards and judges. We started with Dances with Dogs on Friday the weather was perfect the dogs really on form, we welcomed Barb Murfet from Queensland and she joined Valeta Pethrick and Deb Hyde all were impressed with the standard and thanked the competitors for their enjoyable routines.

IMDT donated a top scoring dog and with a score of 179.1/180 Ob Ch Noblestarzz Chase the Ace was awarded the prize, congratulations.

The second night and all our winners again received bags of biscuits from Eukanuba plus Pet Stock vouchers and the standard was just stellar we had so many qualifiers in the classes it was just wonderful, lots of spectators watching our clever canines, they were spoilt for choice so many breeds showing off their skills, then shopping and showing on the top arena wow what a night.

We welcomed Brian Fielder from South Australia to the judging panel and he joined Barb Murfet, Valeta Pethrick, Cindy Didsman, Karren McCluskey and Amanda Houston all were delighted with the standard of work in their rings

Perfect score in Rally Masters and a super routine in Novice Obedience saw Albion Spell Weaver with Katie Partridge take out top spot for the top scoring award in both Rally and Obedience what a night for this pair thank-you again IMDT for donating this award

The last night and again great sportsmanship was on display this time Sam Shields with her team ran the Agility and Jumping rings, so many great courses set, lots of smiles meant lots of clear rounds being produced and a huge congratulations to Kristy Kelly with Wicked Born to be Wild and Kim Jackson with Boormagic KC Spitfire as they both gained their Agility Champion titles and what a night to do it.

Trick Dogs Tests was also on show this night and with the rings made from the lovely dressage panelling our judges Cheryl Bedggood, Paul Skewes and Maja Pitts were so happy with the standard and we had a perfect score produced and what a Classic weekend for Jill Houston and Ob Ch Noblestarzz Chase the Ace as this pair gained the IMDT award for top scoring Trick Dog.

Well done everyone that was involved it was a great event
Amanda Houston



Agility Excellent 500
Riverreed Hez A Pocketofdreams J Robinson



Agility Masters 500
Rosie J Dickinson



Jumping Novice 400
Jewels Pretty in Pink J Dickinson



CCD
Hunter M Bairstow



CD
Albionshore Spell Weaver K Partridge



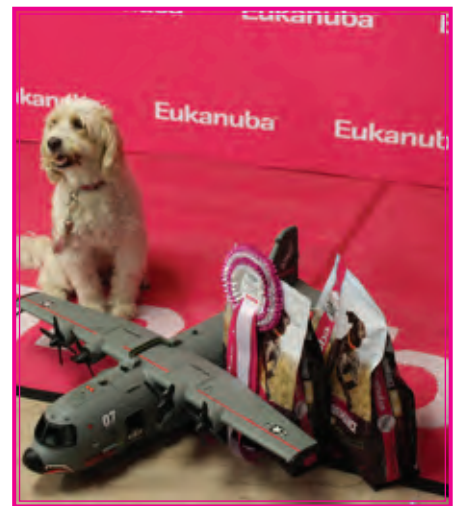
CDX
R Ch Nahrof Trick Olight P Skewes



FS Advanced
Ob Ch Noblestarzz Chase The Ace A Houston



FS Intermediate & HWTM Intermediate
Voncelequ Aquala J Meredith



FS Novice
Scoobee J Chen



FS Starter & HWTM Novice
Ch Kobnco V Vecto S Meikle



HWTM Advanced & Trick Starter
Ob CH Noblestarzz Chase The Ace J Houston



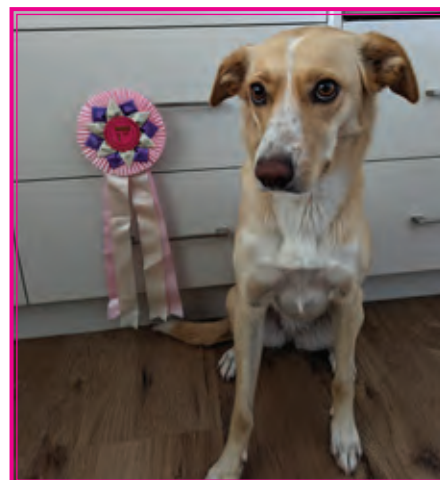
HWTM Starter
Pied Piper A Patching



Jumping Excellent 400
Noblestarzz Back To Blue E Scott



Jumping Masters 500 Trial 2
Pied Piper A Patching



Jumping Novice 1
Tully S Hamilton



Rally Advanced
Ozziedust SKS Skys The Limit R Rice



Rally Excellent
RO Ch Austway Pure Indulgence D Russell



Rally Novice
Tex S Hotter



Trick Advanced
Lola H Wheatley



Trick Intermediate
Ch Kobnco V Vecto S Meikle



Trick Starter & UDX
Ob Ch Noblestarzz Chase The Ace J Houston



Australian National Kennel Council Limited ABN 77 151 544 679 trading as Dogs Australia

PRESS RELEASE - CANINE EHRLICHIOSIS

DOGS Australia has concerns regarding the risk of vectoring Canine Ehrlichiosis through the pedigree dog population attending our major exhibition events such as Royal Shows. All exhibitors are encouraged to ensure their dogs are treated for tick prevention using a reputable systemic treatment prior to attending such events or travelling into areas where the brown dog tick is known to occur.

While reputable tick preventions will stop the spread of Ehrlichiosis between dogs, it still relies on the tick biting the dog in the first place to be effective and of course it's the biting of the dog by the tick which transmits the bacteria.

The disease is characterized by fever, decreased appetite, lethargy and bleeding (such as nose bleeds). Some dogs develop severe and rapid weight loss, swollen limbs, difficulty breathing and blindness. The illness can also affect the bone marrow, which can be fatal. Some dogs die of septicaemia, or they bleed uncontrollably which can also lead to death. Most dogs will improve from treatment with antibiotics and other

supportive measures. However, some may develop a chronic infection, which usually has a terminal outcome.

People planning travel through any of the brown tick distribution areas (as shown on this link [Travelling with your dog in Australia - DAFF \(agriculture.gov.au\)](#) or to events where dogs from other States and Territories will be in attendance should be applying a systemic tick prevention to their animals prior to attendance. Dogs travelling through known brown tick distribution areas should also be using a Seresto Collar [Seresto® Flea & Tick Collar - Official Bayer Pet Collar Site \(seresto-store.com\)](#) which prevents the parasite biting the dog in the first place.



The shaded red area indicates where the brown dog tick is present.

Tracey Barry
Administrator
20 March 2023



Australian National Kennel Council Limited ABN 77 151 544 679 trading as Dogs Australia

PRESS RELEASE - SURVEY RESULTS ROTTWEILER Juvenile Laryngeal Paralysis Polyneuropathy (JLPP)

A survey was conducted by Dogs Australia last year to ascertain the feedback from all owners of registered Rottweilers in relation to testing all breeding pairs for Juvenile Laryngeal Paralysis Polyneuropathy (JLPP).

The response received indicated support.

As this was an amendment to current regulations, the result of the survey was referred to the Dogs Australia Board of Directors for consideration at their February 2023 Special Board meeting where it was endorsed.

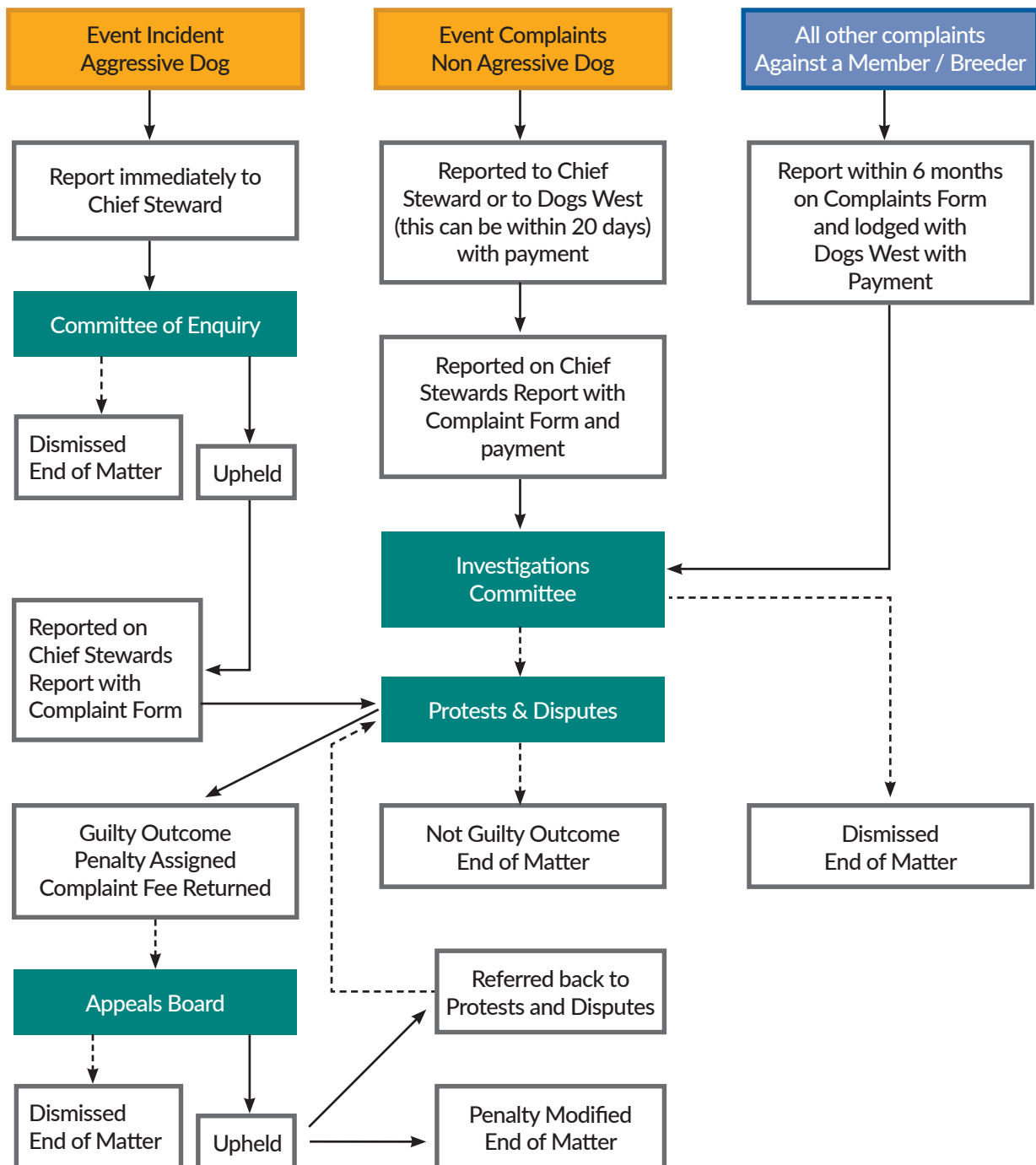
Consequently, the following new clause will be added to Regulations Part 6 - The Register & Registration which will be effective from 1 January 2023:

- 8.17 Effective from 1/1/23 ALL Rottweilers be tested for JUVENILE LARYNGEAL PARALYSIS POLYNEUROPATHY (JLPP) prior to being mated and only Clear to Clear or Clear to Carrier be permitted. The exception to this is Frozen Semen whereby a sample can be taken from left over semen when a bitch is inseminated and then sent off for testing; in these cases, the bitch must be a Clear on the chance the sire may be a Carrier. Certificate to be provided by the Laboratory carrying out testing eg: Laboklin, OFA, Orivet. Samples must be taken by a Vet or a Certified Collector.

Tracey Barry
Administrator
21 March 2023

In accordance with Regulation A43 some important aspects to lodging a complaint are:

- No anonymous complaints can be accepted (either by telephone, mail, or email)
- General complaint enquiries must be in email or writing.
- Complaints must be submitted by the complainant. Third Party complaints cannot be accepted.
- Complaints must be received on the Dogs West Complaints Form available on the website and at Dogs West events.
- A lodgement fee is required for a complaint to be forwarded to the Compliance Officer (see Regulation A42 for full details).
- All breaches at an event should be lodged at the time of the incident.
- When the complaint is upheld, the lodgement fee will be returned to the complainant.
- Disputes relating to the sale of dogs often do not involve Dogs West. These disputes should be resolved via Consumer Protection WA or via the legal system.



APPEALS – In the case where the member charged chooses to appeal a decision, this is according to Regulations A75-A83. The Appeals outcome is final. Acknowledgement receipts and outcomes are provided by Dogs West Office to relevant parties.



DANCES WITH DOGS CLUB OF WA

DATE	EVENT	JUDGES
Saturday 1st July 2023	DWD HTM & Freestyle	Trial 1 Mrs H Gross-Richardson Ms A Lacy-Herbert Ms D Hyde Trial 2 Mrs M Pitts Ms D Hyde Ms J Meredith

Enquiries: Jill Houston 08 9296 4996



WEST COAST DOG SPORTS

DATE	EVENT	JUDGES
Saturday 1st July	Lure Coursing Trial	Miss H Mosslar (ACT)

Enquiries: Danielle.m.simpson@outlook.com



United Field Trial Club of WA Inc

UNITED FIELD TRIAL CLUB (INC)

Date	Event	Judge	Enquiries
24th June	Novice All Pointing Breeds Gundogs Field Trial	Mr R Johnson	J Johnson 0407 211 151
25th June	Open All Pointing Breeds Gundogs Field Trial	Miss E Johnson	
1st July	Open All Pointing Breeds Gundogs Field Trial	Mr A Mercieca	L Store 0448 366 532
15th July	Open Pointer & Setter Field Trial (CS)	Mr A Mercieca	



TRACKWEST DOG CLUB (INC)

Date	Event	Judge	Enquiries
10 June	Tracking Trial	Ms G Jenkins, Ms A Thompson, Ms J Hannaford, Ms C Mews	Valeta Pethrick trev.val@inet.net.au
14 June	Tracking Trial	Mrs V Pethrick, Ms C Murphy, Ms J Pleece, Ms K Oliver	
24 June	Track & Search Trial Urban	Mrs V Pethrick, Ms G Jenkins, Ms C Weetman, Mr I Heard	Janet Pleece 0414 377 682 janpleece@gmail.com
25 June	Track & Search Trial	Mrs P Wilkins, Ms K Pearce	
15 July	Tracking Trial	Ms G Jenkins, Ms A Thompson, Ms K Oliver, Ms C Weetman	Valeta Pethrick trev.val@inet.net.au
19 July	Tracking Trial	Ms K Pearce, Mrs P Wilkins, Ms J Pleece, Ms C Murphy	
29 July	Track & Search Trial Urban	Mrs V Pethrick, Ms G Jenkins, Mr I Heard	Janet Pleece 0414 377 682 janpleece@gmail.com
30 July	Track & Search Trial	Ms K Pearce	
2 Aug	Track & Search Trail	Ms K McCluskey	
19 Aug	Track & Search Trial Urban	Mrs V Pethrick, Mrs L Jooste, Mr I Heard	Janet Pleece 0414 377 682 janpleece@gmail.com
20 Aug	Track & Search Trial	Ms G Jenkins, Ms K Pearce	
23 Aug	Track & Search Trial	Mrs L Jooste	

Check www.trackwestwa.com.au for further information



ADVANCED TRACKING CLUB OF WA INC SCENTWORK

Date	Event	Judges
2 July	Exteriors – Nov & Adv Vehicles – Nov & Adv	Mrs S Marciano Miss T O'Neil
12 July	Interiors Exc & Masters Containers – Exc & Masters	Miss F Cowie
9 August	Interiors – Exc & Masters Containers – Exc & Masters	Miss F Cowie

Enquiries: Danielle 0403 385 333 (Text Only) or kivadogperth@gmail.com



ALL BREEDS HERDING CLUB OF WA

Date	Event	Judges
6 May	Double Header Herding Trials	Mr P Shurmer, Ms D Baile, Mrs P Scurlock
11 June	Double Header Herding Trials	Mrs P Scurlock, Mrs S Smith, Ms D Baile
1 July	Double Header Herding Trials	Mr P Shurmer, Ms D Baile, Mrs P Scurlock
16 July	Double Header Herding Trials	Ms V Nemeth, Ms D Baile, Mrs P Scurlock

Enquiries: Pam Scurlock 0416 211 676 or Email scurlock@inet.net.au



RETRIEVING CLUB OF WA (INC)

Date	Event	Judge	Enquiries
18 June	All Age Retrieving Trial	Mr R Johnson	J Johnson 0407 211 151
16 July	Novice & Restricted Retrieving Trial	Mr A Bartram	
30 July	Open Utility Field Trial Novice & Restricted Retrieving Trial	Mr M McClure	



ADVANCED TRACKING CLUB OF WA INC

SCENTWORK

Date	Event	Judges
3 June	Track N Search Trial Urban	Mrs P Wilkins
4 June	Tracking & Track n Search Trial (Tests 1-4 only)	Mrs H Gross-Richardson Ms K McCluskey Ms K Oliver only to TDX6
18 June	Tracking & Track n Search Trial (Tests 1-4 only)	Ms K McCluskey
8 July	Track & Search Trial Urban	Ms K McCluskey
9 July	Tracking & Track n Search Trial (Tests 1-4 only)	Ms K McCluskey Mrs H Gross-Richardson

Enquiries: Di Bolger 0419 497 200



Upcoming Events

Correct at time of going to press.
See www.dogswest.com for updated list of events

Date	Day	Event	Club	Closing
6	Sat	Championship Show & Parade	Gun Dog Club	17-Apr
6	Sat	Championship Shows x 2	Non Sporting Dog Club	10-Apr
6	Sat	Championship & Open Show	Working Dog Club	17-Apr
6	Sat	Championship & Open Show	Bull Terrier Club	24-Apr
6	Sat	Championship & Open Show	Rhodesian Ridgeback Club	24-Apr
6	Sat	Lure Coursing trial	Whippet Club	17-Apr
6	Sat	Obedience & Rally Trials & Trick Dog Tests	Midland Dog Training Club	24-Apr
6	Sat	Double Header Herding Trial & Tests	All Breeds Herding Club of WA	24-Apr
7	Sun	Championship x 2 & Open Show	Utility Dog Club	10-Apr
7	Sun	Championship Show	WA Terrier Club	24-Apr
7	Sun	Championship Show x 2	WA Toy Dog Spec.Club	10-Apr
7	Sun	Championship & Open Show	WA Beagle Club	24-Apr
7	Sun	Open Show	Tenterfield Terrier	10-Apr
7	Sun	Agility Trials x 2	Agility Club of WA	24-Apr
7	Sun	Retrieving Trial - Novice & Restricted Stakes	Retrieving Club	24-Apr
7	Sun	Tracking/Track & Search Trial	Advanced Tracking Club	24-Apr
10	Wed	Scent Work Trial	Advanced Tracking Club	24-Apr
13	Sat	Championship Show x 2 (All Breeds)	Canine Stewards Assoc	1-May
13	Sat	Obedience,Rally and Trick Trials	Perth Training & ODC	1-May
13	Sat	Retrieving Trial - All Age Stakes (National Fundraiser)	CAWA Events Ctee	1-May
14	Sun	Championship Show x 2 (All Breeds)	Canine Stewards Assoc	1-May
14	Sun	Retrieving Trial (All Age Stakes)	Gundog Club of WA	1-May
14	Sun	Trick Trial x 2	Rockingham Dog Club	1-May
20	Sat	Championship Show (All Breeds)	Geraldton & Dist. KC	1-May
20	Sat	Championship Charity Show (All Breeds)	Geraldton & Dist. KC	1-May
20	Sat	Novice Utility Field Trial	United Field Trial Club of WA	8-May
20	Sat	Obedience /Rally and TricksTrials	German Shepherd DA	1-May
20/24	Sat/Wed	Tracking Trial	Trackwest	8-May
21	Sun	Championship Show (All Breeds)	Geraldton & Dist. KC	1-May
21	Sun	Retrieving Trial - Novice & Restricted Stakes	Labrador Retriever Club	1-May
24	Wed	Scent Work Trial	Advanced Tracking Club	8-May
27	Sat	Novice Pointer & Setter Field Trial	United Field Trial Club of WA	15-May
27/28/31	Sat/Sun/Wed	Track & Search Dog Trial	Trackwest	15-May
28	Wed	National Agility Trial	CAWA Events Ctee	24-Apr
28	Sun	Retrieving Trial - Novice & Restricted Stakes	Golden Retriever Club	15-May
28	Sun	Open Pointer & Setter Field Trial	United Field Trial Club of WA	15-May
Date	Day	Event	Club	Closing
3	Sat	Championship Shows x 2 (Canine Fundraisers - All Breeds)	CAWA Events Ctee	15-May
3/4	Sat/Sun	Tracking/Track & Search Trial	Advanced Tracking Club	22-May
3	Sat	Retrieving Trial - All Age Stakes (National Fundraiser)	CAWA Events Ctee	22-May
4	Sun	Championship Shows (Canine Fundraisers - All Breeds)	CAWA Events Ctee	15-May
4	Sun	Retrieving Trial - All Age Stakes (National Fundraiser)	CAWA Events Ctee	22-May
5	Mon	Obedience & Rally Trials	Southern River A&ODC	22-May
5	Mon	Lure Coursing Trial	Whippet Club	22-May
7	Wed	Scent Work Trial	Advanced Tracking Club	22-May
10/11	Sat/Sun	Championship & Open Show (All Breeds)	Ladies Kennel Club	15-May
10/14	Sat/Wed	Tracking Trial	Trackwest	29-May
10	Sat	Open Utility Field Trial	United Field Trial Club of WA	29-May
11	Sun	Championship Show (All Breeds)	Ladies Kennel Club	15-May
11	Sun	Retrieving Trial - (Novice & Restricted Stakes)	Gun Dog Club	29-May
11	Sun	Herding Trial - Double header	All Breeds Herding Club	29-May
17	Sat	Championship Show (B&A) (All Breeds) AM	German Shep DC & Oriental Breeds Soc	5-Jun
17	Sat	Championship Show (All Breeds) Fundraiser PM	German Shep DC	5-Jun

events
may
2023

events
june
2023

17	Sat	Scentwork Trial	Midland Dog Club	29-May
18	Sun	Agility Trial x 2	Agility Club of WA	5-Jun
18	Sun	Retrieving Trial - All Age Stakes	Retrieving Club	5-Jun
18/21	Sun/Wed	Tracking/Track & Search Trial	Advanced Tracking Club	5-Jun
24	Sat	Obedience, Rally and Trick Trials	Gun Dog Club	12-Jun
24	Sat	Novice APB Field Trial	United Field Trial Club of WA	12-Jun
24	Sat	Celebration of The Best	CAWA Events Ctee	29-May
24/25	Sat/Sun	Track & Search Dog Trial	Trackwest	12-Jun
25	Sun	Championship & Open Shows (All Breeds)	Metropolitan Kennel Club	12-Jun
25	Sun	Obedience & Rally Trials	Northern Suburbs T&ODC	14-Jun
25	Sun	Open APB Field Trial	United Field Trial Club of WA	12-Jun
Date	Day	Event	Club	Closing
1/5	Sat/Wed	Tracking Trial	Trackwest	19-Jun
1	Sat	Open (APB) All Pointing Breeds Gundogs Field trial (Closed Season)	United Field Trial Club of WA	19-Jun
1	Sat	DWD Competitions x 2	DWD Club of WA	19-Jun
1	Sat	Lure Coursing Trial	West Coast Dog Sports	19-Jun
1	Sat	Herding Trial - Double header	All Breeds Herding Club	17-Jun
2	Sun	Open Show	German Shepherd DA	19-Jun
2	Sun	Agility Trials x 2	Shetland Sheepdog Club	19-Jun
2	Sun	Private booking - AM	Reserved for Veteran Car Club	19-Jun
2	Sun	Scent Work Trial	Advanced Tracking Club	16-Jun
2	Sun	Lure Coursing Trial	Whippet Club	12-Jun
8	Sat	Championship & Open Shows (All Breeds)	Hills Kennel Club	12-Jun
8	Sat	Retrieving Trial - Nov & Rest Stakes (National Fundraiser)	CAWA Events Ctee	26-Jun
8	Sat	Agility Trial	Cloverdale Canine Comp.	26-Jun
8/9/12	Sat/Sun/Wed	Tracking/Track & Search Trial	Advanced Tracking Club	26-Jun
8	Sat	Endurance Test	German Shepherd DA	12-Jun
9	Sun	Championship & Open Show	Oriental Breeds	19-Jun
9	Sun	Championship x 2	Collie & Shetland SC	19-Jun
9	Sun	Championship Show	Old English Sheepdog	12-Jun
9	Sun	Open Show x 2	WA Terrier Club	26-Jun
9	Sun	Retrieving Trial - All Age Stakes (National Fundraiser)	CAWA Events Ctee	26-Jun
12	Sun	Scent Work Trial	Advanced Tracking Club	3-Jul
14	Fri	Championship Show (All Breeds)	WA Kennel Club	26-Jun
15	Sat	Championship Show (All Breeds)	WA Kennel Club	26-Jun
15	Sat	Trick Dog Tests x 2	DWD Club of WA	3-Jul
15/19	Sat/Wed	Tracking Trial	Trackwest	3-Jul
15	Sat	Pointer & Setter Field Trial	United Field Trial Club of WA	3-Jul
16	Sun	Championship & Open Shows (All Breeds)	WA Kennel Club	26-Jun
16	Sun	Retrieving Trial - Novice & Restricted Stakes	Retrieving Club	3-Jul
16	Sun	Herding Trial - Double header	All Breeds Herding Club	3-Jul
22	Sat	Obedience x 2 & Rally Trials	Geraldton & Dist. KC	15-Jul
22	Sat	Championship Show x 2	Canine Stewards Assoc	8-Jul
22	Sat	Agility Trials x 3	Geraldton & Dist. KC	15-Jul
22	Sat	Retrieving Trial - Novice & Restricted Stakes	Gun Dog Club	10-Jul
23	Sun	Championship Show & Open Show (All Breeds)	Canine Stewards Assoc	8-Jul
23	Sun	Jumping Trials x 3	Geraldton & Dist. KC	15-Jul
23	Sun	Retrieving Trial - All Age Stakes	Gun Dog Club	10-Jul
29	Sat	Championship Show (All Breeds)	All Breeds Dog Club	10-Jul
29	Sat	Obedience /Rally and TricksTrials	German Shepherd DA	3-Jul
29/30/2	Sat/Sun/Wed	Track & Search Dog Trial	Trackwest	17-Jul
30	Sun	Championship Show (All Breeds)	All Breeds Dog Club	10-Jul
30	Sun	Agility Trials x 2	Southern River A&ODC	14-Jul
30	Sun	Retrieving Trial - Novice & Restricted Stakes	Retrieving Club	17-Jul

events
june
2023

events
july
2023



ENTRIES CLOSE: 22.05.23

ORIENTAL BREEDS SOCIETY & GERMAN SHEPHERD DOG ASSOCIATION OF WA



Saturday, 17th June 2023 – Dogs West Main Arena, Southern River

BUILDING & AMENITIES CHAMPIONSHIP SHOW

Ms O. NANKIVELL..... Gr 1: Toys
Ms J. VAN DINTER Gr 2: Terriers
Mrs R. OMA.....Gr 3: Gundogs
Mrs C. SEEBER.....Gr 4: Hounds

Mr F. WARING..... Gr 5: Working Dogs
Ms E. MOONEY Gr 6: Utility
Ms J. SAYERS Gr 7: Non Sporting & General Specials

CHIEF STEWARD: Mr J Fenner
ENTRIES CLOSE: Monday 22nd May, 2023
ENTRIES TO: Mrs J Olive, Treasurer, PO Box 531 Kelmescott or online,
www.showmanager.com.au
ENTRY FEES: \$11.00 per entry, \$5.00 Babies
CATALOGUE: \$2.50 please order and pay with entries
CLASSES: Baby, Minor, Puppy, Junior, Intermediate, State Bred,
 Aust Bred, Open & Open Neuter
GATES OPEN: 8.00am

JUDGING TIME: 9.00am Junior Handlers - Show at conclusion of JH.
 Alphabetical as per regulations
TROPHIES & SASHES: Best & RUp In Show, All Class In Show, Runner Up
 Show In Show, Runner Up In Show, All Class in Show
 winners
SASHES ONLY: Best & RUp In Group, Class In Group
 Available
REFRESHMENTS:
ENQUIRIES: Kerrie Mansell kerrie@upnaway.com
 Jackie Olive 0415 319 676 after hours

ENTRIES CLOSE: 29.05.23

MIDLAND DOG TRAINING CLUB SCENT WORK TRIAL

Saturday 17th June 2023, Serenity Farm, 221 Dinsdale Road Wooroloo



JUDGES:
Miss F. COWIE.....
 GROUP or CLASS
 Vehicles (all levels)
 Novice (clove)
 Advanced (clove and birch)
 Excellent (clove, birch and anise)
 Masters (all odours)

CHIEF STEWARD: Paul Skewes
ENTRIES CLOSE: Monday 29th May 2023
ENTRIES TO: Online preferred: <https://www.topdodgevents.com.au>
 or MDTC Trial Secretary PO Box 5019
 MIDLAND WA 6056
ENTRY FEES: \$15 per entry MDTC Members, \$20 per entry non-
 members
CATALOGUE: Available online on Scent Work WA Facebook page
ORDINARY CLASSES: Vehicles - Novice, Advanced, Excellent and Masters

GATES OPEN: 9.00am
VETTING TIME: 9.30am
JUDGING TIME: 10.00am
TROPHIES & SASHES: Rosettes for 1st place, 2nd place and 3rd place
ROSETTES ONLY: All qualifying scores
REFRESHMENTS: BYO
ENQUIRIES: Sarina Laurin 0438 274 278 (text only)
 or miraweestud@gmail.com

ENTRIES CLOSE: 17.04.23

THE WHIPPET CLUB OF WA

MONDAY 5TH JUNE 2023

David Buttfield Equestrian Ground,
 Kamup Rd, Serpentine WA 6125

LURE COURSING TRIAL

JUDGE
Miss K. BELL (WA)

ENQUIRIES:
 EMAIL: wcwa.treasurer1@gmail.com
 Regulation B23.4.4 Applies

ENTRIES CLOSE: 17.04.23

THE WHIPPET CLUB OF WA

SUNDAY 2ND JULY 2023

FIELD-WING, LOT 2308 CAMERON RD,
 MALEBELLING, WA, 6302

LURE COURSING TRIAL

JUDGE
Miss H. MOSSLAR (ACT)

ENQUIRIES:
 EMAIL: whippetclubwa@gmail.com
 Regulation B23.4.4 Applies



Schedules cont...

ENTRIES CLOSE: 05.06.23



AGILITY CLUB OF WESTERN AUSTRALIA

Sunday 18th June Dogs West Lower Arena, Southern River

AGILITY DOUBLE HEADER

Ms Y. HAYNESADM/ADO (am) JDO/JDM (pm)

Ms J. WEBSTER JD/JDX (am)

Mrs M. BELL-JONES ADX/AD (am)

Mr M. RHODENJDO/JDM (pm)

Miss N. NEETHLINGADM/ADO (pm)

Miss A. HOUSTON JD/JDX (pm)

Mrs N. FORD ADX/AD (pm)

CHIEF STEWARD: Ms J Bramwell
ENTRIES CLOSE: Monday 05th of June 2023
ENTRIES TO: online at www.topdogevents.com.au
ENTRY FEES: Members \$10.00 - Non Members \$12.00 per entry
CATALOGUES: Available online
GATES OPEN: 7.30am

VETTING TIME: 8.30am
JUDGING TIME: 9:00am as per catalogue. PM trial to follow AM trial
TROPHIES & SASHES: Top three places in each height.
Top three overall in open
ENQUIRIES: contact@agilityclubofwa.com.au

ENTRIES CLOSE: 05.06.23



GERMAN SHEPHERD DOG ASSOCIATION OF WA INC.

Saturday 17th June 2023, Dogs West Main Arena, Southern River

ALL BREEDS CHAMPIONSHIP SHOW



Online Entries Available

www.showmanager.com.au

Ms R. CARNEGIE Group 1
Ms N. SHARRETT Group 2
Mr S. WARRY Group 3
Mrs S. MALLIA Group 4

Mrs P. KELLY Group 5
Mrs P. CAMPBELL Group 6
Ms K. MANSELL Group 7
Mr S. WARRY General Specials

CHIEF STEWARD: Mr John Fenner
ENTRIES CLOSE: **Postal** - Monday 5th June 2023
Online - Monday 12th June 2023@ 11pm WST
ENTRIES TO: Postal C/- Showmanager. Box 78, Waterford West. QLD. 4133
Online www.showmanager.com.au
ENTRY FEES: Postal Entries \$15.50, Babies \$9.50 Online Entries \$14.00, Babies \$8.00
Cheques made payable to: "The German Shepherd Dog Association of WA"
CATALOGUE: Online only - available to download for exhibitors to print their own prior to show.

CLASSES: Baby, Minor, Puppy, Junior, Intermediate, State Bred, Aust Bred, Open & Open Neuter
GATES OPEN: 8.00am
JUDGING TIME: Immediately Following Completion of 1st Show
JUDGING ORDER: All groups alphabetical as per regulations
TROPHIES & ROSETTES: Best & Runner Up in Show, All Class in Show winners
ROSETTES ONLY: Best & Runner Up in Group, All Class in Group winners
REFRESHMENTS: Available at the canteen
ENQUIRIES: All enquiries to Kerrie Pearce 0423 390 144

The GSDAWA reserve the right to re-allocate breeds between judges should numbers warrant.

ENTRIES CLOSE: 12.06.23



Online Entries Available
www.showmanager.com.au

GUN DOG CLUB OF WESTERN AUSTRALIA INC.

Saturday, 24 June 2023, Dogs West Lower Arena, Southern River

JOHN & NELL MINTY MEMORIAL OBEDIENCE & RALLY TRIALS



OBEDIENCE
Mrs C. BEDGGOODUDX CD & CCD
Mr F. WARING UD & CDX

RALLY
Ms D. HYDE MASTERS, EXCELLENT, ADVANCED & NOVICE

TRICKS
Mrs M. PITTSSTARTER
Mr P. SKEWES NOVICE
Mrs J. MEREDITH INTERMEDIATE
Mrs J. MEREDITH ADVANCED

The Club reserves the right to reallocate or appoint additional judges as required

CHIEF STEWARD: Mrs M Hankinson
ENTRIES CLOSE: Monday 12th June 2023
ENTRIES TO: online www.showmanager.com.au or Email: gdcwatrial@gmail.com - with copy of payment Post: Mrs M Hankinson 32 Wallangarra Drive, Bedforddale WA 6112
ENTRY FEES: MEMBERS: \$8.00 NON-MEMBERS: \$10.00 BANK TRANSFER: BSB: 066108 Account: 00903006 Ref: Handler name CHEQUES PAYABLE TO "GUNDOG CLUB OF WA INC"

CATALOGUE: FACEBOOK - OBEDIENCE WA
MEMBERSHIP SUBS: Due 01 November Each Year - Double/Single: \$15.00
GATES OPEN: 7.30am
VETTING TIME: Obedience 08:30 Rally 09:00 Tricks 09:30
JUDGING TIME: OBEDIENCE: 9:00am RALLY: 9:30am TRICK: 10:30am
ROSETTES: 1st place - qualifying scores only
REFRESHMENTS: BYO / DOGS WEST CANTEEN
ENQUIRIES: Mrs M Hankinson - 9399 6564 / gdcwatrial@gmail.com



ENTRIES CLOSE: 15.05.23



Show Manager
Online Entries Available
www.showmanager.com.au

CANINE FUND RAISERS CHAMPIONSHIP SHOWS

SPONSORED BY

Eukanuba



Show Manager
Online Entries Available
www.showmanager.com.au

Saturday 3rd & Sunday 4h June 2023 – Dogs West Main Arena, Southern River

GROUPS	Saturday(am)1-4 System	Saturday(pm) 1-4 System	Sunday
TOYS	Mr John Comerford (NSW)	Mrs Toni Comerford (NSW)	Mr Shamil Kurmaev (WA)
TERRIERS.....	Mr Shamil Kurmaev (WA)	Mr Matthew Morse (VIC)	Mrs Toni Comerford (NSW)
GUNDOGS	Ms Olivia Nankivell (WA)	Mr Shamil Kurmaev (WA)	Mr John Comerford (NSW)
HOUNDS	Mrs Lee Parker (VIC)	Mr Matthew Morse (VIC)	Mr Frank Waring (WA)
WORKING DOGS	Mr Matthew Morse (VIC)	Mr John Comerford (NSW)	Mrs Sandra Einam (WA)
UTILITY	Mrs Toni Comerford (NSW)	Mr Frank Waring (WA)	Mrs Lee Parker (VIC)
NON SPORTING	Mrs Victoria Parke (WA)	Mrs Lee Parker (VIC)	Mr Matthew Morse (VIC)
GENERAL	Mr Matthew Morse (VIC)	Mrs Toni Comerford (NSW)	Mr John Comerford (NSW)

CHIEF STEWARD: Mr R Shellback

ENTRIES CLOSE: Monday 15th May 2023, Online 23rd May 2023. No Late entries

ENTRIES TO: CFR Entries, C/- Dogs West, 602 Warton Road, Southern River, WA, 6110

or

Online at www.showmanager.com.au

ENTRY FEES: Online Entries: \$14.00 per dog per show, Babies \$7.00 per show. Includes club online fee. Merchant / Credit card fees additional

Postal Entries: \$15.50 per dog per show, Babies \$8.50 per show

Cheques to cover all or any shows made payable to "Dogs West".

Payment for all shows can be on the one cheque in the same envelope.

SEPARATE ENTRY FORMS FOR EACH SHOW MARKED CLEARLY SATURDAY AM / PM or SUNDAY

In the event of shows being cancelled, refund of entry fee & club online fee will be available

CATALOGUES: Free online or \$5.00 hard copy for one catalogue for all 3 shows. Please order and pay for with entries.

CLASSES: Baby, Minor, Puppy, Junior, Intermediate, State Bred, Aust Bred, Open & Open Neuter - All Shows

OTHER CLASSES: Dogswest Junior Handlers on Sunday 9.00am

GATES OPEN: **Saturday** - 7.00am **Sunday** - 7.00am

JUDGING TIME: **Saturday** - Show 1 8.30am, Show 2 Not before 12 noon, **Sunday** 9.00am (after the completion of Junior Handlers)

JUDGING ORDER: All groups alphabetical as per regulations as listed above.

VOUCHERS & ROSETTES: **Saturday** - Best in Show 1st & 2nd, Baby in Show, Puppy in Show & Neuter in Show

Sunday - Best Exhibit & Runner Up in Show and all Class in Show winners

ROSETTES ONLY: **Saturday** - Best in Group I-4th, Baby, Puppy & Neuter in Group

Sunday - Best Exhibit & Runner Up in Group and all Class in Group winners, Runner up Neuter in Show

REFRESHMENTS: Available at canteen

ENQUIRIES: Jeni Sach 0409 840 808 between 6.30pm and 8.00 pm only

Regulation B23.4.4 Applies



Schedules cont...

ENTRIES CLOSE: 12.06.23

OLD ENGLISH SHEEPDOG CLUB of WA (Inc)

Sunday 9th July 2023, Dogs West Lower Arena, Southern River

CHAMPIONSHIP SHOW



Mrs L. NIEMANN (SA) Old English Sheepdogs Only

CHIEF STEWARD: Mr M. Jenkins
ENTRIES CLOSE: Monday 12th June 2022
ENTRIES TO: Show Secretary Mrs H Boudewyns 4 Yawl Crt Ocean Reef WA 6027
ENTRY FEES: Members \$12.00 1st entry, \$9.00 each additional entry, Non Members \$15.00 1st entry, \$13.00 each additional entry
CATALOGUE: \$2.00
MEMBERSHIP SUBS: Due 30 September 2023
CLASSES: Baby, Minor, Puppy, Junior, Intermediate, State Bred, Aust Bred, Open

OTHER CLASSES: Veteran 12, 7 years & over, Open Neuter
GATES OPEN: 10.00am
JUDGING TIME: 2.00pm
TROPHIES & SASHES: Best & Runner-up in Show
SASHES ONLY: Class in Show
REFRESHMENTS: Afternoon tea to follow show, please bring a plate to share
ENQUIRIES: Helen Boudewyns 0409 370 454

ENTRIES CLOSE: 12.06.23



GERMAN SHEPHERD DOG ASSOCIATION OF WA INC.

Saturday 8th July 2023, GSDAWA Grounds 23 Passmore Street, Southern River

ENDURANCE TEST



Mrs H. GROSS-RICHARDSON ENDURANCE TEST

CHIEF STEWARD: Kym Glenny
ENTRIES CLOSE: Monday 12th June, 2022
ENTRIES TO: Online www.showmanager.com.au or GSDAWA, 7 Wiggins Road, Orelia WA 6167
ENTRY FEES: \$30.00 Members, \$35.00 Non Members
CATALOGUE: Printed \$1 please order with entry, or download from Obedience WA Facebook page
ORDINARY CLASSES: Endurance Test

GATES OPEN: 7.30am
VETTING TIME: 8.00am to 8.40am
JUDGING TIME: 8.45am. All competitors are required to wear HiViz vests, Helmets are required for all bike riders
TROPHIES & SASHES: Certificates for all qualifiers. Badges for qualifiers on request
REFRESHMENTS: Available
ENQUIRIES: Diane Webb, Phone 0438 207 734

ENTRIES CLOSE: 12.06.23



HILLS KENNEL CLUB OF WA

Saturday 8th July 2023, Dogs West Main Arena, Southern River

CHAMPIONSHIP SHOW



Mrs P. CAMPBELL GROUP 1
Ms L. WALMSLEY GROUP 2
Ms J. VAN DINTER GROUP 3
Ms E. FEKETE GROUP 4

Ms A. SMITH GROUP 5
Mr S. WARRY GROUP 6
Mrs S. MONK GROUP 7 & GENERAL SPECIALS

CHIEF STEWARD: Jeni Sach
ENTRIES CLOSE: Monday 12th June, 2023
ENTRIES TO: www.showmanager.com.au or HKCWA, 3 Ponders Cove, Safety Bay, WA, 6169
ENTRY FEES: \$12 Members, \$14 Non-Members, \$6 babies
CATALOGUES: \$2.50. Please order & pay with entries
MEMBERSHIP SUBS: Due September (\$6.00)
CLASSES: Baby, Minor, Puppy, Junior, Inter, State, Aust & Open
OTHER CLASSES: Open Neuter

GATES OPEN: 7.00am
JUDGING TIME/ORDER: Not before 11.00am (15 minutes after completion of Open Show)
TROPHIES & SASHES: BIS, RUBIS, All Classes in Show, BIG, RUBIG, BISN & RUBISN
SASHES ONLY: All Classes in Group
REFRESHMENTS: Canteen
ENQUIRIES: Jeni Sach - 0409 840 808 between 6pm and 8.30pm only



ENTRIES CLOSE: 19.06.23

ORIENTAL BREEDS SOCIETY of WA

Sunday 9th July 2023, Dogs West Main Arena, Southern River

OPEN SHOW

Ms O. NANKIVELL..... **GROUP 7:** Chow Chow. Japanese Spitz, Lhasa Apso, Shar Pel, Shih Tzu, Tibetan Terrier
Mrs D. CASE..... **GROUP 6:** Akila, Akila Japanese. Shiba Inu, Tibetan Mastiff
Ms J. LAWRENCE..... **GROUP 1:** Chinese Crested, Japanese Chin, Perkingese Pug, Tibetan Spaniel
Ms J. LAWRENCE..... **GENERAL SPECIALS:** Specials

CHIEF STEWARD:	Mr C. Warren	CLASSES:	Baby, Minor, Puppy, Junior, Intermediate, State Bred, Aust Bred, Open
ENTRIES CLOSE:	Monday 19th June, 2023	GATES OPEN:	8.00am
ENTRIES TO:	Treasurer J Olive PO Box 531 Kelmscott WA 6991 or www.easydogentries.com	JUDGING TIME:	11.00am Group 7, Group 6, then Group 1
ENTRY FEES:	Members \$7.00 Non members \$9.00	ROSETTES/PRIZES:	Best In Show, Runner Up In Show, All Class in Show winners
CATALOGUES:	\$10.00 Yearbook (Champ+ Open Show in one catalogue) Order and pay for with entries..	ENQUIRIES:	Kerrie Mansell, kerrie@upnaway.com
MEMBERSHIP SUBS:	\$10.00 Single, \$15.00 Double-were due 1st September 2022		

ENTRIES CLOSE: 19.06.23



THE COLLIE & SHETLAND SHEEPDOG CLUB OF WA INC

Sunday 9th July, 2023 Dogs West Main Arena, Southern River

CHAMPIONSHIP SHOW

Mrs J. COOK (VIC)..... ALL BEARDED COLLIES, COLLIES (SMOOTH), COLLIES (ROUGH), BORDER COLLIES, SHETLAND SHEEPDOGS & SPECIALS



CHIEF STEWARD:	Mrs Penny Kelly	SPECIAL CLASSES:	Veteran Sweepstakes
ENTRIES CLOSE:	Postal - Monday 19th June, 2023 Online - Sunday 2nd July	GATES OPEN:	7.30am
ENTRIES TO:	Show Manager- Show Manager PO Box 78 Waterford West QLD 4133 or www.showmanager.com.au	JUDGING TIME/ORDER:	9:00am Bearded Collies, Collies (Smooth), Collies (Rough), Border Collies, Shetland Sheepdogs & Specials All Placegetters will be critiqued
ENTRY FEES:	Babies Members \$8, Non-Members \$12; Ordinary Classes Members \$18, Non-Members \$25 Veteran \$10	TROPHIES & SASHES:	As donated
CATALOGUES:	Free Online. Printed \$4.00 both shows, please pay with entry	SASHES ONLY:	All classes
MEMBERSHIP:	Were due 1/11/2022. Single \$18.00 Double \$22.00 Please pay with entry	REFRESHMENTS:	Please BYO
ORDINARY CLASSES:	Baby, Minor, Puppy, Junior, Intermediate, State Bred, Australian Bred, Open, Open Neuter	ENQUIRIES:	Leanne Irvine - 0409 518 146 (Between 3.00pm and 9.00pm only) hotnote1@bigpond.net.au
		POINTS SCORE:	C & SSC of WA Inc. You must be financial for points to count.

ENTRIES CLOSE: 19.06.23

ORIENTAL BREEDS SOCIETY of WA

Sunday 9th July 2023, Dogs West Main Arena, Southern River

25th ANNIVERSARY CHAMPIONSHIP SHOW

Ms J JONES (VIC)..... **GROUP 1:** Chinese Crested, Japanese Chin, Perkingese Pug, Tibetan Spaniel
GROUP 6: Akila, Akila Japanese. Shiba Inu, Tibetan Mastiff
GROUP 7: Chow Chow. Japanese Spitz, Lhasa Apso, Shar Pel, Shih Tzu, Tibetan Terrier
GENERAL SPECIALS: Specials



CHIEF STEWARD:	Mr C. Warren	CLASSES:	Baby, Minor, Puppy, Junior, Intermediate, State Bred, Aust Bred, Open, Open Neuter
ENTRIES CLOSE:	Monday 19th June, 2023	GATES OPEN:	8.30am
ENTRIES TO:	Mrs J Olive, Treasurer, PO Box 531, Kelmscott 6991 or www.easydogentries.com	JUDGING TIME/ORDER:	10.00am Group 1, Group 6, then Group 7
ENTRY FEES:	Members \$15.00, Babies \$8.00 Non members \$20.00 all classes	TROPHIES & SASHES:	Best In Show, Runner Up In Show, All Class in Show winners
CATALOGUES:	\$10.00 Yearbook (Champ+ Open Show in one catalogue) Order and pay for with entries.	REFRESHMENTS:	Available
MEMBERSHIP SUBS:	\$10.00 Single, \$15.00 Double-were due 1st September 2023	ENQUIRIES:	Kerrie Mansell, kerrie@upnaway.com



Schedules cont...

ENTRIES CLOSE: 19.06.23

THE COLLIE & SHETLAND SHEEPDOG CLUB OF WA INC

Sunday 9th July, 2023 Dogs West Main Arena, Southern River

CHAMPIONSHIP SHOW



Online Entries Available
www.showmanager.com.au



Ms L. IRVINE ALL BEARDED COLLIES, COLLIES (SMOOTH), COLLIES (ROUGH),
BORDER COLLIES, SHETLAND SHEEPDOGS & SPECIALS

CHIEF STEWARD: Mrs Penny Kelly
ENTRIES CLOSE: Postal - Monday 19th June, 2023
 Online - Sunday 2nd July
ENTRIES TO: Show Manager- Show Manager PO Box 78 Waterford
 West QLD 4133 or www.showmanager.com.au
ENTRY FEES: Babies Members \$8, Non-Members \$12; Ordinary
 Classes Members \$18, Non-Members \$25 Veteran \$10
CATALOGUES: Free Online. Printed \$4.00 both shows, please pay with
 entry
MEMBERSHIP: Were due 1/11/2022. Single \$18.00 Double \$22.00
 Please pay with entry
ORDINARY CLASSES: Baby, Minor, Puppy, Junior, Intermediate, State Bred.
 Australian Bred, Open, Open Neuter

SPECIAL CLASSES: Veteran Sweepstakes
GATES OPEN: 7.30am
JUDGING TIME/ORDER: 10.00am Bearded Collies, Collies (Smooth), Collies
 (Rough), Border Collies, Shertland Sheepdogs & Specials
TROPHIES & SASHES: As donated
SASHES ONLY: All classes
REFRESHMENTS: Please BYO
ENQUIRIES: Heather Hawkins (President) 0403 677 103
 yambari22@hotmail.com
POINTS SCORE: C & SSC of WA Inc. You must be financial for points to
 count.

ENTRIES CLOSE: 19.06.23

METROPOLITAN KENNEL CLUB OF WA

Sunday 25th June 2023, Dogs West Main Arena, Southern River

OPEN SHOW



Ms V. WHITE Group 1
Mrs E. FINDLATER Group 2
Mrs O. MEYER Group 3 & GENERAL SPECIALS
Ms T. MOL Group 4

Mrs D. WELLS Group 5
Mrs S. WILDMAN Group 6
Ms A. COURTMAN Group 7

CHIEF STEWARD: Mrs Marion Watson
ENTRIES CLOSE: Monday 19th June 2023
ENTRIES TO: Mrs Marion Watson, 1365 Great Northern Hwy, Upper
 Swan, WA, 6069 or www.showmanager.com.au
ENTRY FEES: \$5.00 Babies \$3.00
CATALOGUES: \$5.00 includes both shows
MEMBERSHIP SUB: \$5.00
ORDINARY CLASSES: Baby, Minor, Puppy, Junior, Intermediate, State Bred,
 Aust Bred, Open & Open Neuter

GATES OPEN: 7.30am
VETTING TIME: at conclusion of Championship Show
JUDGING TIME/ORDER: at conclusion of Championship Show - All groups
 alphabetical as per regulations
TROPHIES & SASHES: BIS, RUBIS, Best in Group, RUBIG, Best Class in Show
SASHES ONLY: Best Class in Group
REFRESHMENTS: Canteen
ENQUIRIES: Marion Watson 9296 4846
 The club reserves the right to re-allocate breeds
 between judges should numbers warrant it

ENTRIES CLOSE: 19.06.23

METROPOLITAN KENNEL CLUB OF WA

Sunday 25th June 2023, Dogs West Main Arena, Southern River

CHAMPIONSHIP SHOW



Mrs C. SEEBER Group 1 & GENERAL SPECIALS
Mrs .S MALIA Group 2
Mr C. KERFOOT Group 3
Mrs M. COCHRONE Group 4

Mrs W. FANCOTE Group 5
Mr R. BERWICK Group 6
Ms S. SHRIGLEY Group 7

CHIEF STEWARD: Mrs Marion
ENTRIES CLOSE: Monday 19th June 2023
ENTRIES TO: Mrs Marion Watson, 1365 Great Northern Hwy, Upper
 Swan, WA, 6069 or www.showmanager.com.au
ENTRY FEES: Online entries \$13 members \$15 non members, all
 babies \$6 Paper entries \$16
CATALOGUES: \$5.00 includes both shows
MEMBERSHIP SUB: \$5.00
ORDINARY CLASSES: Baby, Minor, Puppy, Junior, Intermediate, State Bred,
 Open and Open Neuter

GATES OPEN: 7.30am
VETTING TIME: 9.00am
JUDGING TIME/ORDER: 9am - All groups alphabetical as per regulations
TROPHIES & SASHES: BIS, RUBIS, Best in Group, RUBIG, Best Class in Show
SASHES ONLY: Best Class in Group
REFRESHMENTS: Canteen
ENQUIRIES: L. Findlater 0435 279 981
 The club reserves the right to re-allocate breeds
 between judges should numbers warrant it



ENTRIES CLOSE: 12.06.23



HILLS KENNEL CLUB OF WA

Saturday 8th July 2023, Dogs West Main Arena, Southern River

OPEN SHOW



Ms A. SMITH GROUP 1
Mrs S. TAYLOR GROUP 2
Ms C. FOSTER GROUP 3
Mrs P. KELLY GROUP 4

Ms L. TAYLOR GROUP 5
Ms J. VAN DINTER GROUP 6 & GENERAL SPECIALS
Mrs S. GRIFFITHS GROUP 7

CHIEF STEWARD: Jeni Sach
ENTRIES CLOSE: Monday 12th June, 2023
ENTRIES TO: www.showmanager.com.au
 or HKCWA, 3 Ponders Cove, Safety Bay, WA, 6169
ENTRY FEES: \$5 Members, \$6 Non-members \$3 babies
CATALOGUES: \$2.50. Please order & pay with entries
MEMBERSHIP SUBS: Due September (\$6.00)
CLASSES: Baby, Minor, Puppy, Junior, Inter, State, Aust & Open
OTHER CLASSES: Open Neuter

GATES OPEN: 7.00am
JUDGING TIME/ORDER: 9.00am
TROPHIES & SASHES: BIS, RUBIS, All Classes in Show, BIG, RUBIG, BISN & RUBISN
SASHES ONLY: All Classes in Group
REFRESHMENTS: Canteen
ENQUIRIES: Jeni Sach - 0409 840 808 between 6pm and 8.30pm only

ENTRIES CLOSE: 12.06.23



GERMAN SHEPHERD DOG ASSOCIATION OF WA INC.

Sunday 2nd July 2023, GSDAWA Grounds, 23 Passmore Street, Southern River

OPEN SHOW



Ms L. TAYLOR GERMAN SHEPHERDS ONLY (LSC'S & SC'S) - JUDGING ALL CLASSES

CHIEF STEWARD: Mr John Fenner
ENTRIES CLOSE: Monday 12th June, 2022
ENTRIES TO: electronically via Show Manager Only
 - No late entries will be accepted
ENTRY FEES: \$5.50 all classes (Members),
 \$8.50 all classes (Non Members)
CATALOGUE: Free with first entry. \$2.00 with no entries
MEMBERSHIP SUBS: *Double Handling of German Shepherd Dogs is permitted
 at this Show (ANKC Ltd REG5_shows_14.2)
CLASSES: Baby, Minor, Puppy, Junior, Intermediate,
 Open - Long Stock Coats
 Baby, Minor, Puppy, Junior, Intermediate,
 Open - Stock Coats

GATES OPEN: 7.30am
JUDGING TIME: 8.30 am sharp. Dogs / Bitches
 Please be advised:- The GSDA will enforce the Dogs
 West Heat Policy if the forecast temperature (2 days
 before the Show) is 35 degrees or higher, the Show will
 start at 8.00am
TROPHIES: For BIS & R/Up BIS
RIBBONS: 1st, 2nd & 3rd PLACES ONLY
ENQUIRIES: Jenny Boekelman 9398 6439

ENTRIES CLOSE: 14.06.23

NORTHERN SUBURBS TRAINING & OBEDIENCE DOG CLUB

Sunday 25th June 2023, Carine Open Space, Cnr Beach Rd & Okely Rd, Carine 6020

OBEDIENCE AND RALLY

Mr P. SKEWES UDX, CDX
Dr. D. WEBB UD, CCD
Ms H. GROSS-RICHARDSON CD

Ms. D. ROSE RM, RN
Ms. K. McCLUSKEY RE, RA
Mrs V NEMETH Reserve Obedience & Rally

CHIEF STEWARD: Ms C Freele
ENTRIES CLOSE: Wednesday 14th June, 2022
ENTRIES TO: Online OARS <https://agility-trials-online> or Trial
 Secretary PO Box 122 Greenwood WA 6024
ENTRY FEES: NST&ODC members \$9.00, Non-members \$10.00
CATALOGUE: Will be posted on Obedience FB site
ORDINARY CLASSES: CCD, CD, CDX, UD, UDX, Rally Novice, Advanced,
 Excellent and Masters
GATES OPEN: 8.00am

VETTING TIME: 8.00 - 8.30 unsterilised bitches only
JUDGING TIME: 9.00am
TROPHIES & SASHES: First place getters in CCD and RN, classes above
 receive a cash prize and sash
SASHES ONLY: 2nd & 3rd with qualifying scores
REFRESHMENTS: BYO
ENQUIRIES: Paula Bailey 0414 769 578
 or email paulabailey601@gmail.com



Celebration of the Best



BEST SHOW DOG *BEST PUPPY* *BEST NEUTER*

SATURDAY 24th JUNE 2023, DOGS WEST MAIN ARENA



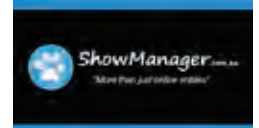
Mystery Judging Panel



- Gift bag for each exhibitor
- Fantastic prizes

Anyone can attend to watch

- come along and cheer on your friends and favourites



QUALIFYING PERIOD AND CRITERIA

The qualifying period for the Celebration of the Best event will be from 1st January 2022 to 30 April 2023 inclusive.

To be eligible to compete, exhibits must qualify by winning one or more of the following

BEST SHOW DOG

- Best Exhibit in Show or Runner Up Best Exhibit in Show (or BIS2 at 1,2,3,4 format shows) at any All-Breeds Championship show held in WA during the qualifying period
- Best Exhibit in Show or Runner Up Best Exhibit in Show at any Whole Group Club Championship show held in WA during the qualifying period (no semi-group, multi-breed or breed show wins will be counted)

BEST PUPPY

- Best Baby, Minor or Puppy in Show at any All-Breeds Championship or Whole Group Club Championship show held in WA during the qualifying period (no semi-group, multi-breed or breed show wins will be counted)
- NOTE: Puppies must be no older than 2 years of age at the date of the event to compete (born on or after 24 June 2021)

BEST NEUTER

- Best Neuter in Show or Runner Up Best Neuter in Show at any All-Breeds Championship show held in WA during the qualifying period
- Best Neuter in Show or Runner Up Best Neuter in Show at any Whole Group Club Championship show held in WA during the qualifying period (no semi-group, multi-breed or breed show wins will be counted)

ENTRIES CLOSE

Postal - Monday 29 May 2023

Online - Monday 19 June 2023 at 9am WST

POSTAL ENTRIES

COTB - 13 Kemmish Avenue, Parmelia WA 6167 or Show Manager online service

ENTRY FEE

\$25 per entry (if same dog in two categories \$20 per entry). Make remittances payable to Dogs West.

- If you are entering one dog in multiple categories, a separate entry form is required for each

CATALOGUE

Online Only (FREE)

CLASSES

Best Show Dog, Best Puppy, Best Neuter

GATES OPEN

7am

JUDGING

8.30am Best Neuter, not before 10am Best Puppy, not before 1pm Best Show Dog

TROPHIES AND ROSETTES

BEST SHOW DOG, BEST PUPPY, BEST NEUTER

ROSETTE

RUNNER UP IN EACH CATEGORY

OTHER PRIZES

Gift bag including Royal Canin product and Pet Stock voucher for all entrants. Winner and runner up in each category will receive additional sponsor prizes in addition to all the above

REFRESHMENTS

Food trucks will be in attendance

ENQUIRIES

email: celebrationofthebest@outlook.com (preferred) or Tony Crocker 0402 246 161 or Penny Kelly 0412 277 113 (between 6pm-8pm only)



Official Photographer
Jodie Grieve



ENTRIES CLOSE: 26.06.23



WEST AUSTRALIAN KENNEL CLUB

The FCI International and Winter Festival ANKC Championship Show Weekend

Friday 14th July, Saturday 15th July, Sunday 16 July, Dogs West, Southern River

	FRIDAY 14 July 2023	SATURDAY 15 July 2023	SUNDAY 16 July 2023
	FCI INTERNATIONAL CACIB SHOW	WINTER FESTIVAL CH/SHOW 1	WINTER FESTIVAL CH/SHOW 2
Mrs L. CHOTHITHADA (Thailand)	FCI Group 3 (Terriers)	ANKC Group 1 (less Australian Silky Terrier, English Toy Terrier, Yorkshire Terrier)	ANKC GROUP 3
Mr P. JOHN (India)	FCI Groups 5 (Spitz & Primitive Spitz Breeders)	Portuguese Water Dog, Schipperke then ANKC GROUP 2	ANKC GROUP 1 (Less Pomeranian)
Mr C. ROSSI (Brazil)	FCI Group 4,6, 10 (Dachshunds, Scent Hounds & Sight Hounds)	ANKC GROUP 3	ANKC GROUP 6
Mrs M. WENDHAUSEN (Brazil)	FCI Groups 2 (Pinscher & Schnauzer - Molossoid Breeds)	ANKC GROUP 5	ANKC Group 7 (less British Bulldog, Great Dane, Shar Pei)
Mr L. GOMEZ-CANCELODO (Columbia)	FCI Group 7 & 8 (Gundog -Pointers & Retrievers)	ANKC Group 6 (less Portuguese Water Dog)	Pomeranian, British Bulldog, Shar Pei then Group 2
Mr T. SKAAR (Sweden)	FCI Group1 (Sheepdogs & Cattle Dogs)	ANKC Group 7 (less Schipperke)	ANKC Group 4
Mr P. STANTON (Sweden)	FCI Group 9 (Companion & Toy Dogs)	Australian Silky Terrier, English Toy Terrier & Yorkshire Terrier then ANKC Group 4	ANKC GROUP 5
GENERAL SPECIALS	Mr T. SKAAR (Sweden)	Mr P. STANTON (Sweden)	Mrs M. WENDHAUSEN (Brasil)

- CHIEF STEWARD:** Mr C Warren
- ENTRIES CLOSE:** Monday 26th June 2023
- ENTRIES TO:** Treasurer 19 Barracuda Drive Willetton 6155 or on line at www.easydogentries.com
- ENTRY FEES:** FCI Members\$ 20.00. Non Members \$25.00. Babies Members\$ 10.00, Non members \$15.00 (all entries incl FCI Levy)
- CATALOGUE:** \$2.50 per show. Order and pay with entry.
- MEMBERSHIP SUBS:** \$6.00, were due 1 January 2023
- ORDINARY CLASSES:** Winter Festival shows - Baby, Minor, Puppy, Junior, Intermediate, State Bred, Aust Bred, Open, & Open Neuter
- OTHER CLASSES:** FCI Show - Baby, Minor, Puppy, Junior, Intermediate, Open (Not Champion), Champion Class (no CACIB for Champions under 15 months).
- SPECIAL CLASSES:** Dogs West Junior Handlers Saturday 9.30am
- GATES OPEN:** Friday - 5.00pm, Saturday 8.30am, Sunday 7.30am
- JUDGING TIME:** Friday - 7.00pm, Saturday 10.00am, Sunday 9.00am.
- TROPHIES & SASHES:** FCI Show-Best In Show 1-4, Baby & Puppy In Show, Best In group 1 & 2, Baby & Puppy In Group
- SASHES ONLY:** Winter Festival Shows-Best & RUp In Show, all Class in Show. Best & Runner Up In Group, Class In Group
- REFRESHMENTS:** Available
- ENQUIRIES:** Kerrie Mansell kerrie@upnaway.com, 0424 521 177 (A/H)
Penny Kelly - 0427 156 999

The club reserves the right to reallocate breeds should circumstances warrant



Schedules cont...

ENTRIES CLOSE: 26.06.23



CLOVERDALE CANINE COMPANIONS

Saturday 8th July, CCC grounds, Abernethy Rd, Cloverdale

AGILITY/JUMPING & STRATEGIC PAIRS

Ms S. OGDEN..... ADO, ADM, ADX, AD
Ms D. ROSE JD & JDX, JDM, JDO
Mr M. RHODEN.....SPDM, SPDX, SPD

CHIEF STEWARD: Mrs V Pethrick
ENTRIES CLOSE: Post 26/06/23, online 3/07/23
ENTRIES TO: [Top Dog Events - www.topdogevents.com.au](http://www.topdogevents.com.au)
ENTRY FEES: Online \$9.00 per entry. \$12 per pairs entry (\$6 each)
Posted/paper \$10.
CATALOGUES: Free download from Top Dog. Printed \$3.pre-paid order
MEMBERSHIP SUBS: Due 01 November annually
GATES OPEN: 7.30am
VETTING TIME: 8.15am - 8.45am or deemed
JUDGING TIME: 9.00am

TROPHIES & SASHES: Sashes-1st Place Qualifying all heights, Open 1st Place
Qualifying overall
SASHES ONLY: 2nd/3rd Place Qualifying all Heights - Open 2nd/3rd
places Qualifying overall. Cash -Open 1st Place
Qualifying overall
REFRESHMENTS: Light refreshments
ENQUIRIES: cloverdalecanine@gmail.com
or via www.topdogevents.com.au
POINTSCORE: Club Members Pointscore applies

ENTRIES CLOSE: 26.06.23



WEST AUSTRALIAN TERRIER CLUB

Sunday 9th July 2023, Dogs West, Southern River

KEN FRIDAY MEMORIAL OPEN SHOW (AM)

JOHN BURN MEMORIAL OPEN SHOW (PM)



Show Manager

Online Entries Available
www.showmanager.com.au

Mrs C. ALLEN (AM)..... GROUP 2 and SPECIALS
Mrs L. SPARGO (PM)..... GROUP 2 and SPECIALS

CHIEF STEWARD: Ida Homer
ENTRIES CLOSE: Monday 26th June 2023
ENTRIES TO: Online www.showmanager.com.au
or West Australian Terrier Club 25 Sunshine Place,
Nambeelup 6207
Direct Payments -
Account Name: West Australian Terrier Club Inc,
BSB: 633000, Account No.: 122236441
ENTRY FEES: Non Members \$9.00 - Members \$7.00 Baby and
Veteran \$5.00. Cheques payable to West Australian
Terrier Club
CATALOGUE: Online only.
MEMBERSHIP: Due 1st Dec each year (\$25 single, \$30 double -
Pensioners Less \$5 of regular rate)

ORDINARY CLASSES: Baby, Minor, Puppy, Junior, Inter, State, Aus, Open,
Open Neuter
SPECIAL CLASSES: Veteran
GATES OPEN: 8.30am
VETTING OPEN: 8.30am
JUDGING TIME: AM Show 10.00am, PM Show at completion of first
show.
SASHES ONLY: BIS, RBIS, all class in show
REFRESHMENTS: BYO
ENQUIRIES: Lauren Ferguson 0430 555 215 or watierclub@gmail.com
POINT SCORE: WATC



ENTRIES CLOSE: 30.06.23



SHETLAND SHEEPDOG CLUB OF WA

Sunday 2nd July 2023, Dogs West Lower Arena, Southern River

AGILITY TRIAL

AM TRIAL

Mrs V. PETHRICK ADO/ADX
Ms Y. HAYNES AD/ADM
Ms G. BRINDLEY JDM/JD
Mrs V. NEMETH JDX/JDO

PM TRIAL

Mrs D. ROSE ADO/ADX
Mrs V. NEMETH AD/ADM
Mr M. RHODEN JDM/JD
Miss K. PHILLIPS JDX/JDO

CHIEF STEWARD: Anne Lacy-Herbert
ENTRIES CLOSE: Monday 30th June 2023
ENTRIES TO: Annelacy-Herbert PO Box 90, Chidlow WA 6556
ENTRY FEES: \$10.00 per entry
GATES OPEN: 7.00am

VETTING TIME: 8.30am
JUDGING TIME: 9.00am
SASHES ONLY: Rosettes first place
ENQUIRIES: annelacyherbert@gmail.com

ENTRIES CLOSE: 03.07.23



GERMAN SHEPHERD DOG ASSOCIATION OF WA INC.

29th July 2023, GSDAWA Grounds, 23 Passmore Street, Southern River

OBEDIENCE & RALLY TRIAL



Ms K. McCLUSKEY UDX, UD, Novice
Mr P. SKEWES Open, CCD

Mrs A. LACY HERBERT RM, RN
Ms C. DIDSMAN RE, RA

CHIEF STEWARD: iVis Kym Glenny
ENTRIES CLOSE: Monday 3rd July 2023
ENTRIES TO: Online www.showmanager.com.au
 or Trials Secretary, 7 Wiggins Road, Orelia WA 6167
ENTRY FEES: \$10 for the first entry, \$9 for each additional entry
CATALOGUE: Printed \$1, please order with entry, or download from the Obedience WA facebook page
ORDINARY CLASSES: UDX, UD, Open, Novice, CCD, RM, RE, RA & RN

GATES OPEN: 7.00am
VETTING TIME: 8.15am -8.45am
JUDGING TIME: Obedience 9.00am, Rally 9:30am
TROPHIES: First Placegetters
SASHES ONLY: 2nd & 3rd with qualifying scores
REFRESHMENTS: Available
ENQUIRIES: Dr Diane Webb 0438 207 734



Schedules cont...

ENTRIES CLOSE: 08.07.23



Show Manager
Online Entries Available
www.showmanager.com.au

CANINE STEWARDS ASSOCIATION OF WA CHAMPIONSHIP SHOWS



Show Manager
Online Entries Available
www.showmanager.com.au

Saturday 22nd and Sunday 23rd July 2023

Dogs West, Southern River

	Sat AM (ANKC Format)	Sat PM (1-4)	Sun AM (ANKC SHOW)	Sun PM (Open Show)
TOYS	Mr G. CRUSE (NSW)	Ms T. MOL (WA)	Mrs D. JOHNSON (NSW)	Miss M. SELBY
TERRIERS	Miss E. BROWN (QLD)	Mrs D. JOHNSON (NSW)	Mr M. JOHNSON (NSW)	Mrs N. LAWTON
GUNDOGS	Ms J. SAYERS (WA)	Mrs W. FANCOTE (WA)	Ms A. COURTMAN (WA)	Ms L. TAYLOR
HOUNDS	Miss E. BROWN (QLD)	Mrs D. JOHNSON (NSW)	Mr M. JOHNSON (NSW)	Miss K. BELL
WORKING DOGS	Mrs O. MEYER (WA)	Miss E. BROWN (QLD)	Mr G. CRUSE (NSW)	Miss C. DIDSMAN
UTILITY	Mr M. JOHNSON (NSW)	Mr G. CRUSE (NSW)	Ms J. SAYERS (WA)	Mrs D. CASE
NON SPORTING	Mrs D. JOHNSON (NSW)	Mr M. JOHNSON (NSW)	Miss E. BROWN (QLD)	Ms N. SHARRATT
GENERAL SPECIALS	Miss E. BROWN (QLD)	Mr M. JOHNSON (NSW)	Mr G. CRUSE (NSW)	Ms L. TAYLOR

CHIEF STEWARD: Mr R Shellback

ENTRIES CLOSE: PAPER - Friday 8 July 2023,
ONLINE - Tuesday 18 July 2023,

POSTAL ENTRIES TO: CSA Entries 9 Tarata Way, FORRESTFIELD 6058 or Online at www.showmanager.com.au

ENTRY FEES: **Championship Shows** Online Entries: \$15.00 per dog per show, Babies \$7.00 per show. Includes club online fee. Merchant / Credit card fees additional

Postal Entries: \$16.50 per dog per show, Babies \$8.50 per show

Open Show Online Entries: \$7.00 per dog per show, Babies FREE. Includes club online fee. Merchant / Credit card fees additional

Postal Entries: \$8.50 per dog per show, Babies FREE

Cheques to cover all or any shows made payable to "Canine Stewards Association of WA". Payment for all shows can be on the one cheque in the same envelope.

SEPARATE ENTRY FORMS FOR EACH SHOW MARKED CLEARLY SAT AM, SAT PM, SUN AM OR SUN PM

CATALOGUES: Free online catalogue only

CLASSES: Baby, Minor, Puppy, Junior, Intermediate, State Bred, Aust Bred, Open & Open Neuter - All Shows

OTHER CLASSES: Junior Handlers - Sunday at 8:30 am

GATES OPEN: 7am both days

JUDGING TIME: **Saturday AM** - 8:30am second show at completion of AM Show not before 1:00pm

Sunday AM - 9:00am second show at completion of AM Show not before 1:00pm

JUDGING ORDER: All groups alphabetical as per regulations as listed above. Sat AM Group 2 before Group 4, Sat PM - Group 4 before Group 2, Sunday AM Group 2 before Group 4

CASH & ROSETTES: **1-4 System** - Best in Show 1st & 2nd, Baby in Show, Puppy in Show & Neuter in Show

ANKC System - Best Exhibit & Runner Up in Show and all Class in Show winners

ROSETTES ONLY: **1-4 System** - Best in Group 1-4th, Baby, Puppy & Neuter in Group

ANKC System - Best Exhibit & Runner Up in Group and all Class in Group winners, Runner up Neuter in Show

REFRESHMENTS: Available at canteen

ENQUIRIES: Christie Chapman 0409 331 498 or via email to caninestewardswa@gmail.com



ENTRIES CLOSE: 10.07.23



THE ALL BREEDS DOG CLUB OF WA (INC.)

Saturday 29th & Sunday 30th July 2023, Dogs West, Southern River

CHAMPIONSHIP SHOWS



	Saturday	Sunday
Mr K LEE (VIC)	GROUP 1.....	GROUP 3
Mrs I. GLYNN (SA)	GROUP 2.....	GROUP 5
Mr J. PATCHETT (VIC)	GROUP 3.....	GROUP 7
Mr I. HINDE (QLD)	GROUP 4.....	GROUP 1
Ms T. EDWARDS (SA)	GROUP 5.....	GROUP 4
Mrs J. WATT (QLD)	GROUP 6.....	GROUP 2
Mr D. KILL (QLD)	GROUP 7.....	GROUP 6
GENERAL SPECIALS	Mr D. KILL	Mr I. HINDE

The Club reserves the right to reallocate breeds to another judge should entries warrant.

- CHIEF STEWARD:** Mrs L Spargo
- ENTRIES CLOSE:** Paper entries - Monday 10 July 2023, online Monday 17 July 2023
- ENTRIES TO:** ABDC of WA, PO Box 2297, Mandurah DC WA 6210 or online at www.showmanager.com.au
- ENTRY FEES:** Members \$13.00, Non-Members \$15.00, All Babies \$7.00,
- CATALOGUES:** \$2.50 per Show. Please order and pay with entry.
- MEMBERSHIP SUBS:** Were due 1 January. All Memberships \$5.00
- CLASSES:** Baby, Minor, Puppy, Junior, Intermediate, State Bred, Aust Bred, Open & Open Neuter
- OTHER CLASSES:** Dogs West Junior Handlers Heat during lunch break (both days).
- GATES OPEN:** 8.30 am
- JUDGING TIME:** 10.00 am Both Days
- JUDGING ORDER:** All groups alphabetical as per Dogs West regulations
Heat clause may apply to starting time - B23.4.4. Check Dogs West website
- TROPHIES & SASHES:** Best Exhibit & R/Up in Show, All Classes in Show, Best & R/Up in Groups
- SASHES ONLY:** All Classes in Group Winners
- REFRESHMENTS:** Available at the canteen
- ENQUIRIES:** Entries - Dr L Brain 0433 033 572, Stewarding - Mrs L Spargo (08) 9398 8698
General - Mrs M Birkenshaw (08) 9455 1348 A/h
- POINT SCORE:** ABDC Members Top Dog Trophy

ENTRIES CLOSE: 14.07.23



SOUTHERN RIVER AGILITY & OBEDIENCE DOG CLUB

Sunday 30th July 2023, Dogs West, Southern River

AGILITY TRIAL

	AM	PM
Ms D.ROSE	JDO/JDX	Ms D.ROSE JDM/JD
Mr M.RHODEN	ADX/ADO	Mr M.RHODEN AD/ADM
Miss J.BULL	AD/ADM	Miss J.BULL ADX/ADO
Miss K.PHILLIPS	JDM/JD	Mrs V.NEMETH JDO/JDX

- CHIEF STEWARD:** Justine Boreham
- ENTRIES CLOSE:** Friday 14th July 2023
- ENTRIES TO:** ONLINE VIA TOP DOG EVENTS
- ENTRY FEES:** \$12 PER CLASS PER DOG
- CATALOGUES:** Obedience WA Facebook page
- GATES OPEN:** 7.30am
- VETTING TIME:** 8.30am

- JUDGING TIME:** 9.00am & Not Before 1.00pm For Afternoon Trial
- TROPHIES & SASHES:** 1st Place all Heights and Classes
- ROSETTES:** Placings to 3rd
- REFRESHMENTS:** BYO
- ENQUIRIES:** borhunter11@yahoo.com



ENTRIES CLOSE: 15.07.23

GERALTON & DISTRICTS KENNEL CLUB

Sunday 23rd July 2023, Woorree Park

TRIPLE HEADER JUMPING

Ms Y. HAYNES Jumping 1 All classes
Miss J. BULL Jumping 2 All classes
Miss S. OGDEN Jumping 3 All classes

CHIEF STEWARD: Mario Comito
JUDGING TIME: 7:30am for Jumping
ENTRIES CLOSE: Saturday 15th July 2023
SASHES ONLY: 1st, 2nd & 3rd place-getters with qualifying score
ENTRIES TO: <https://agility-trials.online/>
REFRESHMENTS: Available at grounds CAMPING:
ENTRY FEES: \$9 Members \$11 Non Members
See our website www.dogclub-geraldton.org.au
GATES OPEN: 6.30am
ENQUIRIES: Adele Killen 0429 933 635
VETTING TIME: 7.00am

ENTRIES CLOSE: 03.07.23



DWD CLUB OF WA

Saturday 15th July 2023, Dogs West, Southern River

TRICK TEST DOUBLE HEADER

1st Competition

2nd Competition

Ms K. McCLUSKEY INTERMEDIATE & ADVANCED
Mrs C. BEDGGOOD NOVICE
Mrs J. HOUSTON STARTER
Mrs C. BEDGGOOD INTERMEDIATE & ADVANCED
Ms A. HOUSTON NOVICE
Ms J. MEREDITH STARTER

CHIEF STEWARD: Ms C Wong
ENTRIES CLOSE: Monday 3rd July, 2023
ENTRIES TO: Cheques made payable to DWD Club Of WA
C/- 19 Wann Court Upper Swan 6069 or
via Top Dog Events <http://agility-trials.online>
ENTRY FEES: \$12 non members \$10 members
Separate form for each class
entry form available from Dogs West
TRICKS: Nomination form or order of tricks must accompany entry
CATALOGUES: Face book Obed WA and Trick WA DWD
CLASSES: Trick Starter, Novice, Intermediate & Advanced
GATES OPEN: 8.00am
CHECK IN/VETTING: 8.30 am 1st comp 10.00 am 2nd comp
JUDGING TIME: 9.30am,
RING SIZE: 15m x 15m
TROPHIES: 1st Qualifying Score
ROSETTES: 2nd & 3rd Qualifying Scores
REFRESHMENTS: BYO
ENQUIRIES: JILL HOUSTON (08) 9296 4996 / 0439 864 996

The club reserves the right to reallocate classes/judges
Regulation B23.4.4 Applies

ENTRIES CLOSE: 15.07.23

GERALTON & DISTRICTS KENNEL CLUB

Saturday 22nd July 2023, Woorree Park

TRIPLE HEADER AGILITY WITH DOUBLE HEADER OBEDIENCE AND RALLY O

Ms Y. HAYNES Agility 1 All classes
Miss J. BULL Agility 2 All classes
Miss S. OGDEN Agility 3 All classes
Ms D. HYDE Obedience 1 & 2 all classes
Ms D. HYDE Rally O all classes

CHIEF STEWARD: Mario Comito
JUDGING TIME: 07:30 for Agility and Obedience
ENTRIES CLOSE: Saturday 15th July 2023
SASHES ONLY: 1st, 2nd & 3rd place-getters with qualifying score
ENTRIES TO: <https://agility-trials.online/>
REFRESHMENTS: Available at grounds CAMPING:
ENTRY FEES: \$9 Members \$11 Non Members
See our website www.dogclub-geraldton.org.au
GATES OPEN: 6.30am
ENQUIRIES: Adele Killen 0429 933 635
VETTING TIME: 7.00am



Event Results

CHAMPIONSHIP SHOWS

FDC 03/02/2023 Entry: 463
Judge: Ms C Rafton (NSW)
 BIS: Sup Ch Sennen Oops I Did It Again, Bernese Mountain Dog, R & K Berwick
 RuBIS: Sup Ch Karlyermai Gotta Bea Rokstar, Australian Silky Terrier, Karlyermai Kennels

FDC 04/02/2023 Entry: 426
Judge: Ms J Rasche
 BIS: Sup Ch Sennen Oops I Did It Again, Bernese Mountain Dog, R & K Berwick
 RuBIS: Harroway Sublime, Whippet, Ms P Campbell

FDC 05/02/2023 Entry: 419
Judge: Mr G Spagnolo (NSW)
 BIS: Gr Ch Parkridge Its All About Me, Golden Retriever, D Turner
 RuBIS: Sup Ch Sennen Oops I Did It Again, Bernese Mountain Dog, R & K Berwick

AABDC 18/02/2023 Entry: 261
Judge: Mr B Luxton (SA)
 BIS: Gr Ch Huntarush Blossom Print, Australian Kelpie, Mrs S Einam
 RuBIS: Dencasstiqe Takeme To The Bank, Siberian Husky, D & S Case

AABDC 19/02/2023 Entry: 261
Judge: Mrs J Armatys (QLD)
 BIS: Gr Ch Huntarush Blossom Print, Australian Kelpie, Mrs S Einam
 RuBIS: Vansitar Glimmer In The Fire (AI) (IID NZ), Dobermann, Vansitar Dobermanns

HKC of WA 24/02/2023 Entry: 473
Judge: Mr A Reid (Vic)
 BIS: Harroway Sublime, Whippet, Ms P Campbell
 RuBIS: Sup Ch Blackboy Absolut Viktor (AI), Labrador Retriever, Blackboy Kennels

HKC of WA 25/02/2023 Entry: 473
Judge: Mrs J Wilshier
 BIS: Sup Ch Sunland Star Witness, Shetland Sheepdog, Mrs S Van Dinter
 RuBIS: Sup Ch Miniatura Ember Rain, Siberian Husky, C Primrose & R Connolly

WESTERN CLASSIC 03/03/2023 Entry: 798
Judge: Mr Gopi Krishnan (Malaysia)
 BIS: Ch Happybear Mr Brytesyde (AI), Newfoundland, Miss N Ryan
 RuBIS: Sup Ch Blackboy Absolut Viktor (AI), Labrador Retriever, Blackboy Kennels

OPEN SHOWS

B & DDC 12/02/2023 Entry: 61
Judge: Ms J Van Dinter
 BIS: Ch Ananda Sashay Away, Havanese, R & S Shellback
 RuBIS: Ch Wolfproud Cinnamon Bear, Chow Chow, J Lawrence & Shelanu Kennels

OBEDIENCE & RALLY OBEDIENCE

NST&ODC 11/02/2023
CCD - Judge: Ms D Hyde
 1st - Ch Rosamontana Quicksilver, Dr S Chu
CD - Judge: Ms D Hyde
 1st - Jazz, P Loudon
CDX - Judge: Mrs V Pethrick
 1st - Lola, H Wheatley
UDX - Judge: Mrs V Pethrick
 1st - Ob Ch Noblestarzz Chase The Ace, J Houston
Rally Novice - Judge: Ms K McCluskey
 1st - Gemelo Gives It A Little Kick (AI), Mrs M Aliss & Mr A Parkes
Rally Advanced - Judge: Mr P Skewes
 1st - Ob Ch Noblestarzz Chase The Ace, J Houston
Rally Excellent - Judge: Mr P Skewes
 1st - Ch Bursirius Just Keep Swimming, J Burren
Rally Masters - Judge: Ms K McCluskey
 1st - Ch Ubique Don't Walk Away, J & A Houston
AABDC 18/02/2023 Judge: Mr P Skewes
CCD
 1st - Ch Rosamontana Quicksilver, Dr S Chu
CD
 1st - Dryandra Thunderstruck, N Ford

CDX
 1st - Ozziedust SKS Skys The Limit, R Rice
Rally Novice
 1st - Tex, S Hotter
Rally Advanced
 1st - Ch Bursirius Just Keep Swimming, J Burren
Rally Excellent
 1st - Ch Bursirius Just Keep Swimming, J Burren
Rally Masters
 1st - R Ch Rusty, M Bairstow
AABDC 19/02/2023 Judge: Mr P Skewes
Rally Novice
 1st - Tex, S Hotter
Rally Advanced
 1st - Koda, S Hotter
Rally Excellent
 1st - Ozziedust SKS Skys The Limit, R Rice
Rally Masters
 1st - R Ch Rusty, M Bairstow
GSDA 25/02/2023
CCD - Judge: Mr F Waring
 1st - Cheyvale Chevy, H Vaughan
CD - Judge: Mr F Waring
 1st - Kerodan Lets Go Crazy, W Monks
UD - Judge: Mrs V Pethrick
 1st - R Ch Sabaranburg Purple Rain, B & L Lubbock & Dr D Webb
Rally Novice - Judge: Ms K McCluskey
 1st - Ch Multestua Heaven Sent Hugo, S Gee
Rally Advanced - Judge: Mrs V Nemeth
 1st - Ob Ch Noblestarzz Chase The Ace, J Houston
Rally Excellent - Judge: Mrs V Nemeth
 1st - Jezmic Blue Nostalgia, A Healey
Rally Masters - Judge: Ms K McCluskey
 1st - T Ch TS Gr Ch Borderlight Whole Lotta Love, J Ryan
Western Classic 04/03/2023
CCD - Judge: Mr B Fielder (SA)
 1st - Hunter, S Bairstow
CD - Judge: Mr B Fielder (SA)
 1st - Albionshore Dream Weaver, K Partridge
CDX - Judge: Mrs B Murfet (QLD)
 1st - R Ch Nahrof Trick Olight, P Skewes
UDX - Judge: Mrs V Pethrick
 1st - Ob Ch Noblestarzz Chase The Ace, J Houston
CCC 11/03/2023
CCD - Judge: Mr F Waring
 1st - Bouffant Play Jazz For Me, J Attard
CD - Judge: Mr F Waring
 1st - Albionshore Dream Weaver, K Partridge
CDX - Judge: Dr D Webb
 1st - R Ch Rusty, M Bairstow
Rally Novice - Judge: Miss C Didsman
 1st - Ch Multestua Heaven Sent Hugo, S Gee
Rally Advanced - Judge: Miss C Didsman
 1st - Dual Neut Ch (R) Sanpasho Magic Meteor, S Robson
Rally Excellent - Judge: Mrs C Bedgood
 1st - Ob Ch Noblestarzz Chase The Ace, J Houston
Rally Masters - Judge: Mrs C Bedgood
 1st - Ch Ubique Don't Walk Away, J & A Houston

AGILITY

CCC 04/02/2023
Agility Trail Judge: Ms Y Haynes
Novice
 300 - Donriver Sassy N Sweet, M & M Rhoden
 400 - Dawnsio Sonic Boom, S Maybury
 500 - Tully, S Hamilton
Open
 500 - Rosie, J Dickinson
Jumping Trial - Judge: Miss K Phillips
Novice
 300 - Lochwind Moment In Time, A Lacy-Herbert
 400 - Jewels Pretty In Pink, J Dickinson
 500 - Freisen Rosa, E Freisen
 600 - Ch Wazzat Mejor Amigo, J Boreham
Excellent
 300 - Dawnsio Maximum Torque, S Ogden
 500 - Quinnaki Onnawynner, C Snook
Masters
 200 - Patch, Ms B & Dr C Hill
 300 - Wickedborntobewild, K Kelly
 400 - Scoobie, J Chen
 500 - Kerodan Light It Up, S Tolhurst
 600 - Tourjour Nuit Nice Novel, Mrs A & Mr M McEwen
Gamblers Trial - Judge: Miss C Didsman
Novice
 400 - Borderlight Midnight Skye, M Stephens

Excellent
 300 - Albionshore Dream Weaver, K Partridge
 600 - Flatout Ridgy Didge, D Owen
Masters
 500 - TS Gr Ch T Ch Borderlight Aryel Queste, D Rose
AABDC 18/02/2023
Agility Trial 1 - Judge: Ms J Bull
Novice
 400 - Jewels Pretty In Pink, J Dickinson
 500 - Kerodan Light It Up, S Tolhurst
Excellent
 600 - Wollys Jack Of Hearts, E Pope
Masters
 300 - Ag Ch Tiakina Time To Shine, N Ford
 400 - Ch Mirawee Heartsong, T Wansborough
 500 - Millison Park Bizzie, G O'Keefe
Agility Trial 2 - Judge: Ms S Ogden
Novice
 400 - Jewels Pretty In Pink, J Dickinson
 500 - Tully, S Hamilton
Masters
 300 - Sunland Smoke Ova Th Water, J Percy-Bower
 500 - Rosie, J Dickinson
 600 - Fletch, C Macpherson
AABDC 19/02/2023
Jumping Trial 1 - Judge: Ms J Bull
Novice
 400 - Dawnsio Sonic Boom, S Maybury
 500 - Tex, S Hotter
Excellent
 200 - Toffee, J & J Johnson
 500 - Borderlight Dream Spirit, K Popp
Masters
 300 - Ag Ch Tiakina Time To Shine, N Ford
 400 - Scoobie, J Chen
 500 - Dunwurkn Its Showtime, J Webster
Jumping Trial 2 - Judge: Ms S Ogden
Novice
 400 - Dawnsio Sonic Boom, S Maybury
 500 - Tex, S Hotter
 600 - Ellishea Hamish Nelson, H Ellis
Excellent
 500 - Borderlight Dream Spirit, K Popp
 600 - Pilbara Denny, T Lord
Masters
 300 - Ag Ch Tiakina Time To Shine, N Ford
 400 - Scoobie, J Chen
 500 - Kerodan Light It Up, S Tolhurst
 600 - Wollys Jack Of Hearts, E Pope
WESTERN CLASSIC 05/03/2023
Agility Trial 1 - Judge - Mrs B Murfet (QLD)
Novice
 300 - Robgai Rainbow Connection, S Yearsley
 400 - Ashmore Foreverto Luv, J Crowley
Excellent
 200 - Patch, Ms B & Dr C Hill
 300 - Blossom, J O'Brien
 500 - Ozziedust SKS Skys The Limit, R Rice
Jumping Trial 1 - Judge: Mr B Fielder (SA)
Novice
 300 - Ch Nagpuni Mister Bigg, Mrs A Deasy
 400 - Jewels Pretty In Pink, J Dickinson
 500 - Tully, S Hamilton
 600 - Murphy, A Mortimer
Excellent
 500 - Borderlight My Loyal Takoda, M Van Ross
Masters
 200 - Patch, Ms B & Dr C Hill
 300 - Wickedborntobewild, K Kelly
 400 - Ag Netherdee Revvin It Up, S Ogden
 500 - Ozziedust SKS Skys The Limit, R Rice
 600 - Phoenix, C Hartney
Agility Trial 2 - Judge: Ms Y Haynes
Novice
 300 - Donriver Sassy N Sweet, M & M Rhoden
 400 - Jewels Dancing Queen, J Pearson
 500 - Silver Frost, N Thompson
Excellent
 500 - Riverreed Hez A Pocketofdreams, D Robinson
Masters
 300 - Wickedborntobewild, K Kelly
 400 - Ag Netherdee Revvin It Up, S Ogden
 500 - Rosie, J Dickinson
 600 - Fletch, C Macpherson
Jumping Trial 2 - Judge: Mrs V Nemeth
Novice
 300 - Ch Nagpuni Mister Bigg, Mrs A Deasy
 400 - Borderlight Midnight Skye, M Stephens
 500 - Kayladene Pippins Quest, J & R Nugent
 600 - Ellishea Hamish Nelson, H Ellis

Excellent
 300 - Lochwind Onyx, S Yearsley
 400 - Noblestarzz Back to Blue, E Scott
 600 - Flatout Ridgy Didge, D Owen
Masters
 300 - Wickedborntobewild, K Kelly
 400 - Ag Netherdee Revvin It Up, S Ogden
 500 - Pied Piper, A Patching
 600 - Fletch, C Macpherson

DANCES WITH DOGS

MDTC of WA 10/02/2023
Judges: MrsA Lacy-Herbert, Mr P Skewes, Ms V Long
HTM Starter
 1st - Ch Mirawee Starlight Melody, S Laurin
HTM Novice
 1st - Tiakina Taking Liberties, S Blaxall
HTM Intermediate
 1st - Vonceleque Aquala, J Meredith
HTM Advanced
 1st - Ob Ch Noblestarzz Chase The Ace, J Houston
FS Starter
 1st - Ch Mirawee Deluxe Edition, S Laurin
FS Novice
 1st - Vonceleque Aquala, J Meredith
FS Intermediate
 1st - Ch Mirawee Heartsong, T Wansborough
FS Advanced
 1st - Ch Ubique Don't Walk Away, J & A Houston
WESTERN CLASSIC 03/03/2023
Judges: Ms D Hyde, Mrs B Murfet (QLD), Mrs V Pethrick
HTM Starter
 1st - Pied Piper, A Patching
HTM Novice
 1st - Ch Kobnko V Vecto (AI), S Meikle
HTM Intermediate
 1st - Vonceleque Aquala, J Meredith
HTM Advanced
 1st - Ob Ch Noblestarzz Chase The Ace, J Houston
FS Starter
 1st - Ch Kobnko V Vecto (AI), S Meikle
FS Novice
 1st - Scoobie, J Chen
FS Intermediate
 1st - Vonceleque Aquala, J Meredith
FS Advanced
 1st - Ob Ch Noblestarzz Chase The Ace, J Houston

SCENTWORK

ATC 22/02/2022
CONTAINERS NOVICE - Cypress - Judge: Miss T O'Neil
 1st - Boomer magic By My Side, M Hankinson
INTERIORS NOVICE
 - Cypress - Judge: Mrs S Marciano
 1st - Tiakina Taking Liberties, S Blaxall
CONTAINERS ADVANCED
 - Cypress & Clove - Judge: Miss T O'Neil
 1st - Boomer magic Guns In The Sky, C Hankinson
INTERIORS ADVANCED
 - Cypress & Clove - Judge: Mrs S Marciano
 1st - Boomer magic Back On Line, M Hankinson
ATC 12/03/2023
Judge: Ms Y Haynes
Vehicles - Excellent - Cypress, Birch & Clove
 1st - Pippa, B Clancy
Exteriors - Excellent - Cypress, Birch & Clove
 Vonzennith Joland, L Benova
Containers - Excellent - Cypress, Birch & Clove
 1st - R Ch Boomer magic Boomsrichochet (AI), M Hankinson

**SUPREME CHAMPION****Bull Terrier**

SUP.CH. STAUNCHBULL QUEST AT HONHAZSTA (AI) - Ms N Sharrett & Mr S Honnery

GOLD AWARD OF MERIT**Cocker Spaniel**

CH. WATERVAAL JUST IN TIME - Ms J Maunder

Keeshond

CH. AXSOLLONTE A MOMENT IN TIME - M Holland

BRONZE AWARD OF MERIT**Shiba Inu**

CH. DIOMEDE CHIIAI TAKARA - R & D WELLS

TOY GROUP**Australian Silky Terrier**

CH. KARLYERMAI NUTIN GOTTA BE EAZI - Karlyermai Kennels

Cavalier King Charles Spaniel

CH. TRESCAVAL AVANT GARDE GIRL (AI) - M J & Dr J LOGAN

Chihuahua (Smooth)

CH. PELISCHA ONE PUNCH KNOCKOUT - Mr P & Mrs E Chandler

Griffon Bruxellois

GRAND. CH. ALYNGA THE TERMINATOR - Ms D Norman & Mr M Huisman

Havanese

CH. HASHKI ZAHLEE - Mr Y Steinberg-Tonge

Japanese Chin

CH. CHINCASA ALL IN THE ATTITUDE - Mr N Skeet

CH. CHINCASA AND THEN SOME - Mr N Skeet

King Charles Spaniel

CH. JOIZ THE LADY ORLAITH - Mrs J McLeavy

Lowchen

CH. SABU COCOLICIOUS - Mr S J Warry

Pomeranian

CH. OLTENIA ROCK MY WORLD - Oltenia Kennels

Russian Toy (Long Haired)

CH. VONAACHEN ABRIELLA - Ms D Simpson

TERRIER GROUP**Fox Terrier (Smooth)**

CH. MIROLINDA MR FINNIGAN - Mrs S Friday

Irish Terrier

CH. COOLANEY COCK OF THE ROCK (AI) - Mrs E E Walmsley

Staffordshire Bull Terrier

CH. STAFFEGAN SHE BEE STINGIN (AI) - Mrs J Cook & Ms A Gray

Tenterfield Terrier

CH. DOUBLEG ON THE ROCK - Ms L Flanagan & Mr P Bingham

CH. DOUBLEG MOJOS LIL PRINCE - Ms L Flanagan & Mr P Bingham

GUNDOG GROUP**Cocker Spaniel (American)**

CH. STARYANKS ITS WRITTEN NTHSTARS - Mrs D Wilkes & Mrs P Clarke

Irish Setter

CH. AMHURST HEJ HEJ JUIPEE ITS ME (AI) - Mrs M Thomas-Rhodes

Nova Scotia Duck Tolling Retriever

CH. MULTESTUA HEAVEN SENT HUGO RN. (IMP NOR) - Mrs S Gee

CH. ZIRIUS CHANTILLY LACE (AI) - Mrs S Gee

Pointer

CH. ATSIRA GRANTS LEGACY (AI) - J & Mrs J Ridgewell

CH. INCHARA LOVE AT FIRST SIGHT - Mrs J Whitehurst

HOUND GROUP**Beagle**

CH. TONICBAY LITTLE DRAGON - Mr A J & Mrs N Crocker

Whippet

CH. HARROWAY SUBLIME - Ms P M Campbell

WORKING DOG GROUP**Australian Kelpie**

CH. SANDSPRITE GINGERBREAD MAN - Mrs S Einam

Border Collie

CH. NOBLESTARZZ DONTPANIC JUSTFIRE - F D & MRS H A HAWKINS

CH. WINPARA PICK UP THE PHONE - Miss R J Evans

Collie (Rough)

CH. KAHNHOND COLOUR ME BLUE - Mr T & Mrs S J Mallia

German Shepherd Dog

CH. CHEVYVALE COLT - Mr D Auguste

German Shepherd Dog (LSC)

CH. UBLONG COSMOPOLITAN CA. - Mrs H Foan

Shetland Sheepdog

CH. ARAJENTO STEPPIN OUT IN STYLE - Mrs K C Tonkin

CH. SHELTAISTIC GOD OF MISCHIEF - Mrs A Scarlett & Mrs M Chato

Welsh Corgi (Pembroke)

CH. LLAMCORG MORGANAS VALENTINA - Ms M M Matthews

White Swiss Shepherd Dog

CH. ROSAMONTANA QUICKSILVER CCD. - Dr S Chu

UTILITY GROUP**Alaskan Malamute**

CH. WOLFPROUD FLORADA - Ms J A Lawrence

Bernese Mountain Dog

CH. BERNABOUT IN THE SPOTLIGHT - Miss J Versteeg & Mrs C Hancock

CH. SENNEN CATCH EM BY SURPRISE - Mr D & Mrs G May & Mrs N Roberts

CH. SENNEN YES IAM WICKED - D J & Mrs G F May

Boxer

CH. BONSUE IN HIGH SPIRITS (AI) - Miss L Herd

Samoyed

CH. SAMOOKA FRIDAYLICIOUS - Mrs K M Micke

CH. SAMOOKA FAST N FURIOUS - Mrs K M Micke

Schnauzer (Miniature)

CH. SCHNAUZINN'S AGENT OF MERCY (IMP NZL) - Mrs S Dooley

St. Bernard

CH. ACCROPOLIS HOWD U LIKE ME NOW (AI) - Miss G Smith

CH. CHRYSTLEPARC EASY ON THE EYE - Mrs V M Kenning

NON SPORTING**Boston Terrier**

CH. OZSTOCK SMOKE N ALLOVER - Mrs D Collins

Chow Chow

CH. SHERAE RED DRAGON DANCER - Miss N Rhodes

Japanese Spitz

CH. DAESDAEMAR PICTURES OF YOU - Ms N Fletcher

Keeshond

CH. KAHNHOND SHES ALL THAT - Mr T & Mrs S J Mallia

CH. KAHNHOND BLACK EMBER - Mr T & Mrs S J Mallia

Poodle (Miniature)

CH. PUDELIAN FOCUS ON ME - Mrs A E M Howell

Shih Tzu

CH. TZUPHORIA ENCHANTED DREAMS - Ms L Booth

NEUTER GRAND CHAMPION**Chihuahua (Long)**

CAN.CH. NEUT. GRAND CH. LAUD MATADOR DE TORRO (IMP CAN) - Miss C Janz

Pug

NEUT. GRAND CH. TOORORK BILLYS BOY - Ms H Ansell

Keeshond

NEUT. GRAND CH. KAHNHOND HUNTER OF HEARTS - Mr T & Mrs S J Mallia

NEUTER CHAMPION**Golden Retriever**

NEUT. CH. AMBERMIST VANGUARD - Ms D Sharkey

Shetland Sheepdog

NEUT. CH. JMELL TH WIZARDS FIRST SPELL - F D & Mrs H A HAWKINS

Bernese Mountain Dog

CH. NEUT. CH. BERNABOUT ENCORE PERFORMANCE - Miss J Versteeg & Mrs C Hancock

French Bulldog

NEUT. CH. BATNBULL XQUISITE LOUISVUITTON - Mrs C van Verseveld

**COMMUNITY COMPANION DOG****Border Collie**

BORDERLIGHT CHEROKEE SCOUT CCD. RN. TDX. JD. GD. SD. - Ms I Levitzke & Ms P McNaughton

German Shepherd Dog

CHEVYVALE CHEVY CCD. - Mrs H Vaughan

Welsh Corgi (Pembroke)

ANWYL TIME KEEPER CCD. RN. TDX. - Ms K Blake

White Swiss Shepherd Dog

CH. ROSAMONTANA QUICKSILVER CCD. - Dr S Chu

COMPANION DOG**Nova Scotia Duck Tolling Retriever**

GLENMAVE OCEAN BREEZE (AI) CD. RA. - Mrs S Gee

Border Collie

KERODAN LETS GO CRAZY CD. RE. JD. HTM.N. FS.N. - Miss W Monks

COMPANION DOG EXCELLENT**Associate Register**

LOLA CDX. TK.I. RAE. ADX. JD. JDO. JDX. SPD. SD. - Ms H Wheatley

AGILITY CHAMPION 500**Labrador Retriever**

AG.CH 500. BOOMERMAGIC KC SPITFIRE ADO. JDO. GDX. SPD. SDX. - Mrs K Jackson

AGILITY DOG**Associate Register**

SKYE CCD. AD. JDX. - Mrs N Lawrance

Sporting Register

SILVEAFROST AD. JD. - Mr S & Mrs N Thompson

AGILITY DOG OPEN**Sporting Register**

ROSIE ADX. ADO. JDO. JDM. SPD. GD. HSAs - Mrs J Dickinson

SNOOKER DOG

Nova Scotia Duck Tolling Retriever PTOLOMY I LIKE TO MOOVE IT (AI) JDX. SD- Ms D Owen

Australian Shepherd

FLATOUT RIDGY DIDGE (AI) AD. JD. GD. SD. - Ms D Owen

SNOOKER DOG EXCELLENT**Australian Shepherd**

TRI CH.(A)(RO) BURSIRIUS HAKUNA MATATA CCD. RAE. TK.N. JDO. GD. SPD. SDX. ET. JC - Miss J Burren

STRATEGIC PAIRS DOG**Australian Shepherd**

TRI CH.(A)(RO) BURSIRIUS HAKUNA MATATA CCD. RAE. TK.N. JDO. GD. SPD. SDX. ET. JC - Miss J Burren

JUMPING DOG**Sporting Register**

FRIESEN ROSA JD. - Ms E Friesen

JEWELS PRETTY IN PINK JD. PT. - Mrs J Dickinson

Border Collie

T.CH. TS. GRAND.CH. BORDERLIGHT MATRIX MISCHIEF RN. TK.S. JD. - Mrs P Wilkins

JUMPING DOG EXCELLENT**Sporting Register**

TOOLALLA THE KRAKEN RN. TK.S. SWN JDX. GD. HT. FS.S. JC. - Miss R Wallace

Nova Scotia Duck Tolling Retriever

PTOLOMY I LIKE TO MOOVE IT (AI) JDX. SD- Ms D Owen

JUMPING DOG MASTERS**Border Collie**

KERODAN LIGHT IT UP JDM. JDO. - Miss S Tolhurst

JUMPING DOG OPEN**Kerodan Light It Up JDM. JDO.**

- Miss S Tolhurst

FREESTYLE STARTER**Lagotto Romagnolo**

TS. GRAND.CH. TRI CH. (T)(TS) OTTOGAL DREAM MUPPET TK.N. RE. HTM.S. FS.S. - Miss N Adams



Performance Titles 16/01/2023 – 15/03/2023

Australian Shepherd
ELITEVIEW GRAB THE PRIZE AT
NORSONIX TK.S. RE. SD. HT FS.S.
- Ms S Robson

FREESTYLE ADVANCED

Border Collie
AGISLEPAWS SON OVA GUN TK.N. RN.
ADX. JDX. GD. SD. SPDX. HTM.S. F.S.A.
- Miss T Wansbrough

FREESTYLE NOVICE

Belgian Shepherd Dog (Malinois)
VONCELEQUE AQUALA (AI) TK.S. RA.
FS.N. HTM.I. - Mrs J K Meredith
HEELWORK TO MUSIC
INTERMEDIATE
Belgian Shepherd Dog (Malinois)
VONCELEQUE AQUALA (AI) TK.S. RA.
FS.N. HTM.I. - Mrs J K Meredith

RALLY NOVICE

Associate Register
KODA RN. - Miss S Hotter
OBT.CH. CISKA RN. - Mrs C H Hille

Sporting Register
PIEDPIPER CD. TK.S. RN. AD. JDX.

- Mrs A Patching
Cocker Spaniel
DAWNSIO SONIC BOOM RN.

- Ms S Maybury
Shetland Sheepdog
DONRIVER SASSY N SWEET RN.
- Mr M & Mrs M Rhoden

Boxer
DUAL. CH. (T) RONIN DREAMING IN
DIGITAL (AI) RN. (IMP NZL)
- Miss L Herd

RALLY ADVANCED

Border Collie
O.CH. NOBLESTARZZ CHASE THE ACE
RA. F.S.A. HTMA. 5 - Mrs J & Miss
A-J Houston

BORDERLIGHT MY BUDDY TK.S. RA.
JDM. SPD. - Mrs T Radin

Poodle (Standard)
BOUFFANT PLAY JAZZ FOR ME CCD.
RA. - Mr J Attard

RALLY EXCELLENT

Lagotto Romagnolo

TS. GRAND.CH. TRI CH. (T)(TS)
OTTOGAL DREAM MUPPET TK.N. RE.
HTM.S. F.S.S. - Miss N Adams

Australian Shepherd

CH. BURSIRIUS JUST KEEP SWIMMING
RE. - Miss J Burren
ELITEVIEW GRAB THE PRIZE AT
NORSONIX TK.S. RE. SD. HT FS.S.

- Ms S Robson

Border Collie

JEZMIC BLUE NOSTALGIA SWN TK.S.
RE. - Ms A Healey

RALLY ADVANCED EXCELLENT

Associate Register

LOLA CDX. TK.I. RAE. ADX. JD. JDO.
JDX. SPD. SD - Ms H Wheatley

TRICK NOVICE

Sporting Register

MARIONVALE AYKEIRA TK.N. JDX.
FS.S. FS.I. HTM.I. - Mrs M R Rogers

Australian Shepherd

HTM.CH. KLEURIG FISTFUL OF
DIAMONDS RE. TK.N. F.S.A.
- Mrs M Pitts

SCENTWORK NOVICE

Associate Register

MISTY SWN - Miss C Naughton

Border Terrier

DUAL. CH. (T) GLENBOGLE
WESTWARD HO SWN TSDX. CA.
- Ms C O'Hehir

German Shepherd Dog

SHAZWICK ALLEY CAT RN. SWN
- Mrs L J Cowell

Alaskan Malamute

ICEPAWS YOU TAKE MY BREATH
AWAY SWA - Ms S Stuart



Prefixes 16/01/2023 – 15/03/2023

NSW

ALKIRALEA Ms M Ryan
AMOPARK Mrs A Ormiston
AQUIBELLA Mr A Lathouras
ARCADIARIDGE Ms L Mills
ASTORAIRES Miss K Wright
BOCEPHUS Mr M Carmody
BONNIESBLUES Mr D Sergi
BRAVIBULL Ms N Mather
CAVIGGY Mrs J Bruner
CRYSTILCAV Mrs H Coulton
JEZINDY Mrs A M Sell
KIYOMIINU Mr D Chung
LARNEE Mrs T Wozniak
LASKAFOX Ms J Safarik
NIGHTVIZN Miss F Knight
PETASAL Ms K Kane
RITZYOAKS Mrs C Stott
RIVENDELGOLD Mrs P Harrington
RUBHAMOR Miss L A Ross
SANDERSAINTS Mrs S Anderson
STELLARBLUE Mr S Clarkson
YELLARA Mr J Dukats

QLD

AAWOO Mrs K Knight
AMBLIN Miss A Miniken
AREMALI Mrs A Carter
ARRYAS Ms J Nancarrow
ASHINING Mrs E Jessop
AVISHAIRE Mrs D Farrow
BAMBELELA Ms A McAlpine
BARKLEYBLUES Mr N Matthews & Ms S Beu
BENAL Ms A Bennie
BEULAHEIM Mrs O Jenkins
BLESTDEHOND Mrs A Briel
BRACONPOYNT Mrs G Simpson
BRAEGEM Ms L Wilson
BUDDNBELLA Ms A Hewitt
CANECOUNTRY Ms T Kochel
CANNGRACE Mrs C Cannon
CAMELSTAFF Mrs E Bristol
CERULEANBLUE Mr A Green & Ms L Buck
CLANPIPSKOOT Ms K Harvie
COBALTBLUES Mrs E Gorton
COLLIEMORY Ms M Hinchliffe
CONORAH Mrs L Gallagher
CREGNEASHBC Mr D & Mrs L Thornton
CRITTACOCKAS Ms B James
DANGOLD J Daniels
DANIBEL Mrs B Daniel
DASHVELEE Mrs T L & Mr M J Schubert
DASJAGEN Miss L Muller
DIALGAZU Mr J Wicks
DIAMONDGIBBS Ms L Gibson
ELVOSTAFF Mrs E Ellevsen

ELYDAR

FUREVERLOVE Mr G Johnston
GLENADINE Miss A Goodson-Adams
GRAGECROFT Miss N Hickling
HEULWENGOLD Miss D Wilson
HIGHLYROYAL Ms L Frost
INDELLA Ms B McLellan & Mr K Hodgson
JACARABULLZ Mr L Jones
KEGZONLEGZ Mr P & Mrs M Young
LAVUEBLUE Miss K Veness & Mr M Brettle
LILLOASIS Mrs S Nixon
LONGDOGLOVES Mrs B Coombs
LOVABOXA Mrs Z Cullen
LUCAVARI Ms E Lane
MESHTELTEE Mrs A Harper
MILUKA Mrs D Hewitt
MULBERRYLANE Ms C Braithwaite
MYBLUEDOGZ Mrs T Strachan
NAVYRIVER Mr M Huddy
ONXYCYPRESS Mrs F McCamley
PASCHKA Mr Z Feng
PATDEALE Dr S Tanevski
PAWFEKTAIZ Mrs M & Mr D Weston
PAWSECLIPSE Mrs K Ellis
QLDLEGACY Miss M Hales
REDILOS Mr J Charlesworth
REGENTVALE Mr N Hill
RICCOCANO Mr J & Mrs M McNab
RYLESAR Mr G Lund
SACHIEL Mrs S L Ferguson
SAPPHIREPUPS Mrs M M Holly
SARAJLABS Ms B Kwapi
SCOUTABULL Mrs S Jocheim
SHELLWESTIE Ms E Smith
SONPERLI Mrs M Pracy
STELLINAMIA Mrs K Loveridge
TIRNACU Ms L Lunney
TYGERBURG Ms C Carney
VANCEBUL Mrs J Neasbey
VIHO Miss M Garland
VONKRIEGERIN Ms K Callum
VONMARKNDI Miss A Clarke
WAGGUMS Mr C M Cox
Mrs P Walker

SA

BHROCAIRE Mr J Collingridge & Mrs N Hine
BLUPHIRE Mr J Bubner
CHARLISANGL Mrs L Carr
DIMINUTA Miss X Rieger
ENEDFELD Mr B Davies
GOLDPODLESNA Miss A Goldie
GYNFAY Ms N McCloud
LAVELLEBLUES Ms K Simmons

Prefix transferred within WA

ACCROPOLIS WA Miss G Smith TO Miss G Smith & Mrs J Smith

LYROLIN

MAGICALLUV Ms L Knights
MERUWATTA Ms E Pearce
MICHEVA Ms J Dawson
MINIEDREAMOR Mr M Kroon
MONORAGOLD Ms N Portela
NNGOLDEN Mrs D Parry
OAKLEIGHGOLD Mrs D Nguyen
QUARTZVALLEY Mrs A Greenslade
SHANALIEGH Ms M Burke
STRAWHATCHI SHANALIEGH Kennels
TRUEPAWS Mr P Rogers & Ms C Ricks
ZEVENHEK Ms T Davis
Mrs D & Mr J Mergler

TAS

LOOKATMOI Mr B Dean
REGALJACK Mrs J Jankovic

VIC

ADABES Mr L Lu
AVENCREEK Miss S Cotter
BALFARRELL Miss C Balcombe
BRAGGONROSE Miss T Butcher
BUNBERRIE Miss M Williams
COUTURETOYS Mr M Del Bello
DOUBLATE Mr J Lloyd
ELCOMPANIONS Mr J James
ELOUERABULL Mr A Sylvio
GLITTERVIEWS Mr B Power
KATZENBAR Mrs A Ruhl
LANOLLIPAP Mrs E Wyatt
LEETREE Miss R Lee-Porcher
OVINA Miss C Ouyang
ROWDYBULL Mrs J V & Mr P R Greenway
SAINTRAMA Mr A Ramadan
SUFINASPOINT Mr J Camilleri
TABAYNES Ms T Knelange
THESPRO Mr D & Mrs R Karaferis
TIDELANDS Miss D Gunn
TONARUKI Mrs E Jio
VALTINONEO Mrs L Knight
VOMPACO Mr M Elphick
WATERMISTY Mr A & Mrs C Thatcher
WILTOY Oakenshield Kennels
WINITRY Miss C Barrie-Gresham
WOOFAR Mr M O'Shea

WA

ATVGATE Mrs F Gilbert
BALPERLUXE Mrs L Evans
BEAUTIFULRUN Mrs T Martin
FORMALE Mrs K McInroy
KALAUghER Mr L Pearson
TENTERPEA Mrs P David
VONADAWOLF Mr R Sinclair


TOY GROUP
Australian Silky Terrier

KARLYERMAI Karlyermai Kennels
1M 2F 28/10/2022 KARLYERMAI
BEOZ IMA KLASST ACT 6100131360
: KARLYERMAI MYSTIC DRAGON
6100115971

KARLYERMAI Karlyermai Kennels
2F 28/11/2022 CH. KARLYERMAI
MASTER KLASST 6100103172 : CH.
KARLYERMAI SHEER INDULGENCE
6100110845

NERASILK Mrs N F Walker 1M
3F 22/12/2022 CH. HAUTCHIEN
TOP HAT N TAILS 2100384221 :
ALLANNETTE STORM DANCER
3100367050

Bichon Frise

DIAMNDAIS Ms F Denney
1F 17/10/2022 CUPIDONNA
BYZANTIUM CRUSADER
4100292925 : CUPIDONNA EROS
SIRROMFET MAGIC 4100318196

JAIMEFAYETTE Miss S M Pallier 3M
1F 08/11/2022 CH. JAIMEFAYETTE
COLOURSANS COLOUR 6100095212
: CH. MONJOIE PETITE DOLL
3100365143

Chihuahua (Long)

VITTORIOSO Mr D Cappello
2M 2F 16/12/2022 ADRAHIL
THE ALDERMAN 2100572006 :
VITTORIOSO PARTI SURPRISE
6100132065

Chihuahua (Smooth)

AZTECIAN Mrs K Field 1F
12/12/2022 CH. RAYVALE IMA ONE
IN A MILLION 2100516485 : CH.
CALIYA SUMMER FIRE 3100399549

BULTOYRES Mrs G Miteva &
Mr S Sinkov 2M 3F 24/12/2022
INCASUNRISE SIR GALAHAD
4100365881 : BULTOYRES BLACK
PEARL 6100125001

MOTEKE Ms M Skeet 2F 13/11/2022
TARQUILA ROCKY 4100279634 :
SEBDAH ELYRAE 6100111888

NIGHTHAVEN Mrs H Foan 1M 3F
18/11/2022 SALINACRUZ LET'S
GO TOKYO (IMP NZL) 06955-2018 :
NIGHTHAVEN RAESA 6100116870

Chinese Crested Dog

PENDER Mrs K P Prendergast 4M 2F
13/11/2022 PENDER MAN IN THE
MIRROR 6100089977 : CH. PENDER
DOLL HOUSE 6100120037

Griffon Bruxellois

NIMBLEGRIFF Ms K Pilgrim-Byrne 2M
20/11/2022 CONAMOORE ERIK THE
BRAVE 6100093082 : ARMORGRIF
HIGHWAY STAR 3100411374

Havanese

SHELLBEARS Mr R S & Mrs S
Shellback 1M 2F 15/09/2022 SUP.
CH. ANANDA A STAR IS BORN
3100389666 : CH. HEKARWE THE
DANCING QUEEN 2100457236

SHELLBEARS Mr R S & Mrs S
Shellback 1M 1F 19/09/2022 SUP.
CH. ANANDA A STAR IS BORN
3100389666 : CH. ANANDA LISTEN
TO HER HEART 3100383816

Lowchen

SABU Mr S J Warry 1M 1F
01/12/2022 SABU HEAVEN SENT
A SHOOTN STAR 6100124269 :
CH. SABU SIMPLEE FLAWLESS
6100096544

Pekingese

JCAMP Miss C Tolentino 2M 2F
09/11/2022 ATHALOW PRINCE
LESTAT 2100552971 : JCAMP NOBLE
CONSORT RIRI 6100128348

Pomeranian

POMSHAZLES Mrs S & Mr R Gardiner
1F 06/11/2022 CORENTIN KOKO
JUNIOR 7100037559 : CUTIZELE
WON RISING STAR 6100102286

POMTASTIC Ms B Rogers 1M
1F 14/10/2022 POMTASTIC
LEGENDSLEEPLYHOLLOW
6100110024 : FYLMOREL MONTH O
SUNDAES 3100388505

POMTASTIC Ms B Rogers 1M
14/10/2022 POMTASTIC SHOULDA
DUCKED 6100122628 : FYLMOREL
MONTH O SUNDAES 3100388505

VANPOMS Mrs D Richardson 2M
24/10/2022 VANPOMS GIVE US A
WINK 6100123964 : CH. KWAIPOM
TO FAST TO FURRY 6100105455

Pug

BLACKTYE Miss A E Godsell 2M
3F 11/11/2022 SUP.CH. CAVHILL
KING OF HEARTS 2100483690 :
CH. KABOVA HOUSE OF GOLD
2100528307

TERRIER GROUP
American Staffordshire Terrier

AMDOMINUS Miss N Walsh 1M
7F 07/12/2022 AMDOMINUS
MEXICAN BLACK TAR 6100128623
: AMDOMINUS GLASS BARBIE
6100125736

MATESHIP Mr A Chapman 4M
4F 04/08/2022 MATESHIP JOCK
6100104767 : MATESHIP TIKA
6100114906

Australian Terrier

ROUGHNUTS Ms N Sharrett & Mr
S Honnery 4M 2F 27/12/2022 NZ.
CH. CH. TASDALE BOO GUESS
WHO (IMP NZL) 02880-2017 : CH.
ROUGHNUTS SCUTTLEBUTT (AI)
6100127981

Bull Terrier

CYCLOP Miss J Beveridge 1M
24/10/2022 BULROARUS THE BOSS
2100555819 : CYCLOP DEVILS
SNOW SPY (AI) 6100121354

Bull Terrier (Miniature)

BULTOYRES Mrs G Miteva & Mr
S Sinkov 3M 11/11/2022 CH.
CHRYSALISS PRINCE OF MISCHIEF
2100564959 : CHRYSALISS
GODDESS OF TIME 2100565042

STARMIN Mrs D V McLachlan 1M 1F
08/12/2022 CH. PUDELIAN NUTHN
BUT AHOONDOG (AI) 6100126444
: STARMIN LIMITED EDITION (AI)
6100126537

Jack Russell Terrier

BATTLESTAR Ms V E White 1F
16/11/2022 CH. BATTLESTAR HEART
OF FIRE 6100130369 : BATTLESTAR
QUINTESSENCE 6100124185

MOMPLEJACK Ms C Fotheringham
4M 1F 07/11/2022 NZ. CH.
ACCOLADE A LITTLE BIT IRISH AT
ZOENDY (IMP NZL) 06364-2014
: TURBOJACKS UPTOWN GIRL
6100098746

Staffordshire Bull Terrier

ARTISINAL Mrs E Park Findlater
1M 18/10/2022 ARTISINAL THE
PINBALL WIZARD (AI) 6100074324 :
CHERISHAPUG BLOW MY TRUMPET
3100353017

BEBECEES Miss B Cromb 5M 6F
31/10/2022 DUBELPLUGERS
ANGELIC GEM 6100091572 :
ACACIABLU PHOENIX 6100121319

BEBECEES Miss B Cromb 1M 5F
03/11/2022 DUBELPLUGERS
ANGELIC GEM 6100091572 :
BEBECEES BUTTERFLY 6100118682

BLUEBUTTER Ms D Randall 5M
2F 09/12/2022 NOTORIOUSBLU
BOMBER BOY 6100104000 :
BLUEBUTTER HARLEES ANGEL
6100110467

BLUELOCK Mr P Washington 1F
14/12/2022 NOTORIOUSBLU
BOMBER BOY 6100104000 :
BLUELOCK MISSY 6100123774

COVEYOFBLUE Mr G Partridge
5M 2F 15/01/2023 MISTYHAVEN
SHOTGUN BLUES 4100278871
: GOLDHOLDINGS MISS LEXXI
6100096281

GEMSTONEPARK Mrs V Mostert 2M
4F 29/11/2022 GEMSTONEPARK
MAXIMUM COPPER 6100101605
: INDIGOREIGN IRON ROSE
6100132318

GOLDHOLDINGS Mrs K & Mr B Cox
4M 4F 02/11/2022 GOLDHOLDINGS
WINTERS WILD FIRE 6100118275
: TRAVSBLEWS PIPERS PARADISE
4100289667

LUACHEYA Mrs R Lopes Lourenco
2M 4F 27/09/2022 CURLAHFIRE
CRACKER JACK 4100354874 :
SALBRAE LITTLE PIP 6100127011

MATESHIP Mr A Chapman 2M 4F
02/09/2022 RKSS MARSTER LEVI
AXEL 4100347132 : SASSYSTEEL LEIA
2100478057

NIRVANABHLU Ms J Wells 4M
1F 25/11/2022 NIRVANABHLU
KOBIE 6100132628 : PATRIOTBLU
QUEENOFQUEENSCHACHA
2100499250

OCEANBLU Ms K Coniglio 5M
1F 23/10/2022 OURSONORA
HARRY WINSTON 2100486804 :
DEBAYBLUES BEST IN THE WEST
4100338181

ONAHII Mrs M Mclean 3M
29/11/2022 UK. CH. NEROTORO
DARK ELEMENT (JW) (IMP UK)
0985DB-SEM : ONAHII HUNTRESS
6100124711

PASQUALYN Mr B & Mrs P Collie 3M
3F 05/11/2022 AMROK DEJA VU
6100116645 : ROSTAFFIE KOA BLUE
6100111997

PIARABLUE Miss J Black & Mr J Myles
2M 4F 03/12/2022 PIARABLUE
KING SUNNY 6100129666 :
MONDOOMOON QUEEN FRANKIE
(AI) 2100563800

PLAVAMORE Mrs M Radich 5M 4F
20/01/2023 PLAVAMORE BLAZE
JAK 6100105035 : HOWLYNWAYS
WESTERN BLOSSOM 6100112415

SALBRAE Miss M Hammond 1M 3F
20/09/2022 CURLAHFIRE CRACKER
JACK 4100354874 : ACACIABLU
JUNE BUG 6100103109

SALBRAE Miss M Hammond 1M
1F 21/09/2022 CURLAHFIRE
CRACKER JACK 4100354874 :
ACACIABLU CHERRY BLOSSOM GIRL
6100110047

SCOOBYBLUE Mrs J & Mr E Gallop
3M 26/11/2022 MOONGLADE
CHASE THE ACE 4100351131
: SCOOBYBLUE OOPS A DAISY
6100111781

WESTERPRIDE Ms T Oteri 3M
4F 06/12/2022 NOTORIOUSBLU
BOMBER BOY 6100104000 :
WESTERPRIDE MYSTIC BLUEBELLE
6100120061

West Highland White Terrier

NUKANMANU Miss M E Fairbairn
2M 2F 30/09/2022 SHINDARRAH
JONNY CASH 2100506882 :
NUKANMANU INDEPENDANCE
6100112215

SYLVENUS Mrs J Mort 3M
21/12/2022 FIRE AND STEEL
OF JURA (IMP NZL) 07241-2021 :
SYLVENUS PEARL 6100131919

GUNDOG GROUP
Chesapeake Bay Retriever

MATESHIP Mr A Chapman 1M
1F 06/10/2022 WEBFOOT
KINGSMAN 4100300820 : BAMGYPS
ALESHANEE 4100270984

Cocker Spaniel

BODHRAN Mr B Davidson 1M 3F
10/10/2022 CORNERMARSH CHIVE
(IMP UK) AY08701702 : BODHRAN
REGINA 6100115494

BODHRAN Mr B Davidson 3M 1F
24/06/2022 BODHRAN NEPOLEON
6100083505 : BODHRAN SKIPPER
6100120147

DONNAS Miss D Daniel 1M 2F
04/12/2022 CH. DONNAS QUINCEY
6100080450 : CLEEMIST SADIE IS
THE ONE 2100531779

ISLANDVIEW Miss T Bridges 2M
1F 15/11/2022 GOLDTAG TASTE
OF GOLD 4100344071 : GOLDTAG
LINDY 4100307494

MORNINGDALE Mrs S J Casbolt 2M
4F 31/10/2022 MORNINGDALE
RAFFAELLO 6100110336 :
MORNINGDALE ROYAL DREAM
6100099000

POPPYTREE Ms H Meijer 2M 1F
23/11/2022 CH. MACDOLLY SECRET
LIAISON (AI) 4100245904-SEM
: TWNROYAL PLENTYOF BLING
4100311508

English Springer Spaniel

BAYSPRING Mrs L & Mr W Loftus
1M 1F 27/11/2022 CH. MAKETAWA
IM YOUR MAN 3100427728 : CH.
OLBAH DUCHESS OF THE DUNES
6100121704

German Shorthaired Pointer

KOBIDAN Mrs J Cattell & Mrs S
Nichols 2M 20/12/2022 KOBIDAN
VICTORY LAP 6100123092 : CH.
KOBIDAN RAISE YOUR GLASS
6100113883

ROOBLU Mrs L Lyster 3M 5F
01/10/2022 BENANEE JUSTA
HIGHLANDER 6100110915
: HEIDERST AUTUMN FIZZ
5100111087

WAUCHOPE Ms E L Johnson 7M 4F
13/12/2022 GUNCREAK GALLIFREY
JC. 6100115671 : JAGACEY NIKE
GAME ON 4100319620

Golden Retriever

AMBERJEM Mrs S Hudson 9M 2F
21/11/2022 MHADAIDH SON OF
THE WEST (AI) NRD. 6100124763
: AMBERJEM DOUBLE DELIGHT
6100121155

ANEIRABY Dr C O'Donnell 2M 3F
02/11/2022 FLOPRYM GAR HEM
S54871/2002-SEM : ANEIRABY
NINIANS CHARM (AI) 6100110817

BERNSEA Ms B Carson 3M
23/12/2021 CH. ASKAVALL ANARCHY
(AI) 4100333264 : ALUBYC
SCARLETT RIBBONS 4100295289

CONRHENNY Mrs R Shepherd 2M
4F 06/10/2022 MHADAIDH SON OF
THE WEST (AI) NRD. 6100124763
: LANLWYD MAREE (IMP UK)
AU00911805

DEKALDI Mrs D Dekker 1M
03/11/2022 GOLDENWATERS
MYHUNT CHANCEALOT
(AI) 6100121318 : MONTEGO
PHILOMENA 2100496394

JARRAHHAUS Mrs R A Spencer 4M
2F 25/12/2022 CH. FETCHNPOINT
ROLLUP YOUR SLEEVE (AI)
2100568937 : JARRAHHAUS EYE
CANDY 6100127948

SKEELIER Miss K Keedwell 6M 2F
14/11/2022 CH. HARVIKGLD WILD
FIRE CCD. RE. TK.N. NRA. ORA.
2100477069 : SANTAMARIA KILLER
QUEEN 3100397011

SKEELIER Miss K Keedwell 4M 2F
04/11/2022 SKEELIER TOO HOT TO
HANDLE 6100129655 : SHARANNELI
PIPER LOUIE 7100035310



Hungarian Vizsla

GYOZTES Miss S Shields & Mrs T Fountaine 1M 09/01/2023 GRAND. CH. DAINGEANN KOBİ AD. JD. GD. SPD. SD. ET. 2100127569 : CH. ASUARE DANCING INTHEMOONLIGHT JC. 4100344544

Irish Setter

BODHRAN Mr B Davidson 7M 3F 26/10/2022 CH. BODHRAN TULLAMORE TRAPPER (AI) 6100121442 : BODHRAN MORGAN 6100126642

Labrador Retriever

BLACKBOY Blackboy Kennels 1F 12/12/2022 CH. MALLORNS DOUBLE CHOCO (IMP FIN) FIN44869/08-SEM : BLACKBOY BURNT CINNAMON (AI) 6100129232

CACAOANIDAE Mrs R Quinn 3M 1F 21/10/2022 CH. GUNDERRAKO FINAL DESTINATION 2100524963-SEM : GOLDENGIRLS OLYMPIC ESSENCE 6100100268

CARNABYACRES Mrs V Ilott 6M 2F 29/12/2022 RIVERLANDS THOR (AI) 2100523420 : GOLDENGIRLS BLACK DIAMOND 6100113197

KARRIMELAB Mrs K Parke 3M 5F 18/11/2022 YRLYLAB RISING STAR 6100119029 : GOLDENGIRLS GOLD INSPIRIT 6100116625

LOUKASTAR Ms L Joesbury 3M 4F 15/11/2022 CH. DRIFTWAY VALENTINO 2100399244 : DRIFTWAY CLASSIC CHARM 2100544976

LYNOKA Mrs L Peace 1M 2F 02/12/2022 FINDWELL BLACK LABEL 4100290754 : VALERAVALE BLACK CHINA PEARL 4100292720
LYSTER Mrs E Reid 4M 6F 13/11/2022 SHAZVIEW STRAIGHT SHOOTER 4100367144 : LYSSTER LOLA 6100122522

LYSTHOM Mrs S Thomas & Mrs T Jarrett 4M 2F 28/11/2022 SILVERSTREAM SOUTHERN CROSS 2100453033 : KOORIBINJAL PORSCHA 6100128749

LYSTHOM Mrs S Thomas & Mrs T Jarrett 3M 6F 03/10/2022 SILVERSTREAM SOUTHERN CROSS 2100453033 : LYSTHOM KITKAT THOMAS 6100127447

ORSINA Mr S & Mrs N Browning 6M 1F 04/12/2022 ROUGHFIELD AIR OVER CAMELOT 08149-2020-SEM : ORSINA WINTER IS COMING 6100116548

PEMBERLEY Mrs M A Radomiljac 3F 07/11/2022 CH. SANGATE COULD GET MESSI (AI) 6100118611-SEM : FIREFIELD WEST MAKARU 7100047248

VALLEYBROOK Mrs J A Pannett 6M 1F 31/12/2022 ADDERSLOT TRUE BOO (AI) RRD. 3100288686-SEM : HUNTOGUN CRICKET (AI) 7100048080

YRLYLAB Ms A T Hood 4M 3F 27/09/2022 YRLYLAB RISING STAR 6100119029 : YRLYLAB ETHEREAL SURPRISE 6100101468

YRLYLAB Ms A T Hood 1M 02/10/2022 YRLYLAB RISING STAR 6100119029 : YRLYLAB ETHEREAL DREAMING 6100101471

Nova Scotia Duck Tolling Retriever
PTOLOMY Mrs S Gee 1M 2F 20/12/2022 CH. T.CH. DUAL. CH. (T) GLENMAVE SEA TRAVELLER (AI) TD. TDX. 3100370808-SEM : CH. PTOLOMY MISSY MOO (AI) RA. 6100119251

Pointer

APPLEMOOR Mrs A Forrest 2M 3F 18/12/2022 PIVOTAL SECOND TO NONE 2100577764 : CH. SANMARLITCH TOO HOT TO HANDLE 4100326348

HOUND GROUP

Beagle

CLARION Mrs T Mawby 1M 1F 10/10/2022 GIBBGRAN JERVIS BAY FISHERMAN 2100486579 : CLARION QUEENS BEACH BIKINI 6100122350
SLIGRACHAN Sligrachan Kennels 2M 1F 20/10/2022 CH. SLIGRACHAN ARGYLLS BRAW WEELAD (AI) 6100121521 : SLIGRACHAN JEANNIES ISLEO SKYE 6100104123

UNEETOILE MRS T K & MISS M P LYNCH 3M 3F 05/10/2022 HOUNDMASTER HOKEY POKEY 6100115592 : CH. MAYSTER RIVER PAIGE 6100104753

Dachshund (Long Haired)
MORNOBLE MORNOBLE DACHSHUNDS 4M 4F 15/11/2022 CH. MORNOBLE IN THE FESTIVE SPIRIT 6100115391 : MORNOBLE EMBLEM OF REMEMBRANCE (AI) 6100108729

Dachshund (Miniature Smooth Haired)
KLEINFREUND Ms L K Munroe 2M 2F 28/11/2022 ANNARIC SONG OF GOLD N FIRE 6100100671 : KLEINFREUND SUSHI 6100130127

SIZZLEVALLEY Mrs J Boskov 2F 06/11/2022 MELTONACRES MR SLINKY 4100318030 : MELTONACRES LADY FRANKIE 4100313710

SIZZLEVALLEY Mrs J Boskov 2M 3F 13/11/2022 MELTONACRES MR SLINKY 4100318030 : MELTONACRES CHOC N SIZZLE 4100314141

TERRALONGI Mr A & Mrs G Jelly 3M 1F 25/11/2022 MELTONACRES MUDDY 4100363564 : TERRALONGI PRIMO 6100110351

TERRALONGI Mr A & Mrs G Jelly 5F 10/11/2022 SAGINOR BLACK DIAMOND 2100482507 : TERRALONGI HEART BREAKER 6100125681

TERRALONGI Mr A & Mrs G Jelly 3M 03/11/2022 ABJEKT MISTER CHIPS 4100283518 : TERRALONGI MOON SHINE 6100126866

Dachshund (Smooth Haired)
LAKANUKI Mrs E E Miles 3M 2F 09/10/2022 CH. LAKANUKI DYNAMIC BOY 6100092593 : LAKANUKI CHAMPAGNE SUPANOVA 6100104602

Rhodesian Ridgeback
TANNU Ms T Nugent 6M 3F 07/11/2022 TANNU LOGAN IS WOLVERYNE (AI) 6100119696 : TANNU BOHEMIAM RHAPSODY 6100116403

Whippet
ARBEE Mr R & Mr A R Beattie 6M 4F 04/01/2023 ALLSTARS AND HANDSOME 5100110755 : ARBEE ANZAC ROSE 6100117039

CRISNICK Mr C & Mrs N Lawton 4M 1F 09/10/2022 ARBEE MR SIN 6100112620 : TATOOINE PERFECT OPPOSITES 6100095881

PINTOAK Mrs K E Pinto 2M 4F 01/11/2022 CH. ARBEE KING QUAIL (AI) 6100106929 : PINTOAK MONAS PORTRAIT 6100113901

SANTASI Mrs S J Taylor 5M 19/11/2022 CH. HARROWAY BLAME GAME 6100121260 : SANTASI WILD ROSE 6100113832

TATOOINE Mrs D & Mr C Reynolds 3M 2F 12/12/2022 TATOOINE DORY 6100130327 : TATOOINE PUPPET SHOW 6100128582

WORKING DOG GROUP

Australian Shepherd

HAYLAU Mrs P Baker 5M 3F 17/10/2022 MAISILVA COSMIC STORM 2100565081 : JEDABUN ROCKABILLY REBEL 2100508759

KLEURIG Ms M De Wyn 3M 2F 14/12/2022 O.CH. R.CH. KLEURIG GUESS WHO HTM.N. 6100083284 : KAAASHA STRIKE IT LUCKY 6100122439

Belgian Shepherd Dog (Malinois)
KANDRARA Mr S Baraiolo 4M 2F 26/11/2022 NORDENSTAMM MELLOQUI (AI) 4100303123 : NORDENSTAMM UTOPIA (AI) 4100349513

Belgian Shepherd Dog (Tervueren)
BONQUEST Miss G Jenkins 3M 4F 02/12/2022 TRI CH. (T)(TS) TS. GRAND.CH. BONQUEST LANGER ALBERT RN. 6100107319 : DUAL. CH. (T) FAUVETNOIR FORGET ME NOT (AI) 6100119729

Border Collie
AZREE Mr P & Mrs R Smyth 5F 02/11/2022 SHERLOT EYE OF THE STORM 6100110192 : DAYRE MYSTIQUE OF THE DRAGON 6100113972

DAYRE Ms D P Rose 1M 1F 04/01/2023 SHERLOT SIR BORDAVELL 6100115410 : TRI CH. (T)(TS) TS. GRAND.CH. SYRYNE SPIRYT OF THE DRAGON CD. RAE. RM. PT. 2100463265

ISLANDVIEW Miss T Bridges 5M 3F 16/11/2022 BORDABEMYN SOLAR LENNY 6100111925 : PAWSONWATER MYSTIC MAYHEM 6100129165

KALEASCO Mrs K Hagarty 7M 3F 24/09/2022 TORUNAHMUK GOLD DIGGER 4100360764 : KIRRAMURRAY WILDEST DREAMS 2100475105

Collie (Rough)
BARCOO Mrs W S Fancote 2M 19/11/2022 CH. YOUANMI LEAVAMESAGE AFTATHBEEP (AI) 6100118502 : CH. BARCOO SUNNYWITHACHANCE OFRAIN (AI) 6100109042

German Shepherd Dog
BRONBOREO Mr B J Pereira & Mr R Pritchard 5M 6F 19/11/2022 WULKANO-UNO VON SCHNITZERTEAM (IMP HUN) MET.NJ.518/16 : ALISHA TEAM TOMAHAVK (IMP SRB) JR763473

BRONBOREO Mr B J Pereira & Mr R Pritchard 3M 2F 24/11/2022 WULKANO-UNO VON SCHNITZERTEAM (IMP HUN) MET. NJ.518/16 : BRONBOREO MISS BEANLAND 6100124607

BRONBOREO Mr B J Pereira & Mr R Pritchard 2M 4F 01/11/2022 WULKANO-UNO VON SCHNITZERTEAM (IMP HUN) MET. NJ.518/16 : BRONBOREO KATE JANNSON 6100126271

BRONBOREO Mr B J Pereira & Mr R Pritchard 6M 2F 10/11/2022 WULKANO-UNO VON SCHNITZERTEAM (IMP HUN) MET. NJ.518/16 : FRIEDENTAL MAZIKEEN 6100115981

BRONBOREO Mr B J Pereira & Mr R Pritchard 3M 2F 25/08/2022 WULKANO-UNO VON SCHNITZERTEAM (IMP HUN) MET. NJ.518/16 : BRONBOREO KITTY CAT 6100123308

BRONBOREO Mr B J Pereira & Mr R Pritchard 2M 1F 30/09/2022 WULKANO-UNO VON SCHNITZERTEAM (IMP HUN) MET. NJ.518/16 : ANDACHT RAZ N HARMONY 2100442566

CHEVYVALE Mr D Auguste 1F 18/11/2022 CH. OLYMP VOM LARCHENHAIN (IMP DEU) SZ2330484 : CHEVYVALE ACTIVLY DEVINE 6100125217

DARKENSTELTH Ms M Sonogo 2M 4F 01/01/2023 KOVACS VIKUS (AI) 3100319406 : LEAFIELD AURA 4100303147

GRANDWEST Mr D R & Mrs C M Willis 5M 4F 04/10/2022 WULKANO-UNO VON SCHNITZERTEAM (IMP HUN) MET. (AI) 6100110836

GRANDWEST Mr D R & Mrs C M Willis 1M 8F 25/11/2022 WULKANO-UNO VON SCHNITZERTEAM (IMP HUN) MET. NJ.518/16 : GRANDWEST OH JADA 6100124735

GRANDWEST Mr D R & Mrs C M Willis 2M 4F 29/10/2022 WULKANO-UNO VON SCHNITZERTEAM (IMP HUN) MET. NJ.518/16 : GRANDWEST PINA COLADA 6100104258

JENTOL Mrs J E Boekelman 6M 4F 10/10/2022 CH. FREMONT BAD BOY 2100498524 : CH. JENTOL DOLLARS CORZIN ASTORM (AI) 6100098506

LASHADAS Ms S Hosking 3M 2F 06/11/2022 SABARANBURG ROSKO 6100107317 : LASHADAS BORN MAGIC (AI) 6100113747

SHAYGAR Mrs J A K Smith 5M 2F 26/11/2022 GEWALT TENNESSEE DRUMMER (AI) 5100093559 : SHAYGAR VENETIAN KRISTAL 6100099618

VOLSCARO Mrs L Pearson & Ms T Roberts 5M 2F 21/11/2022 CHILI DELLA VALCUIA (IMP UK) AW0907109-SEM : VOLSCARO CIAO RIO 6100099942

German Shepherd Dog (LSC)
BRONBOREO Mr B J Pereira & Mr R Pritchard 2M 8F 28/11/2022 TEAM BERN TIGER OF SWEDEN (IMP SWE) SE54346/2019 : BRONBOREO RED LIGHT 6100121102

DUNEDOG Ms A Jones 3M 2F 11/11/2022 CH. OLYMP VOM LARCHENHAIN (IMP DEU) SZ2330484 : LASHADAS A PLUS 6100109779

ELKALA Mrs E Kohler 3M 11/11/2022 SABARANBURG ROSKO 6100107317 : ELKALA ARYAS GAME ON 6100106480

NIGHTHAVEN Mrs H Foaan 1M 6F 20/11/2022 NIGHTHAVEN JEDI WARRIOR JC. 6100125576 : NIGHTHAVEN SAKARI 6100116594

NIGHTHAVEN Mrs H Foaan 3M 5F 26/11/2022 NIGHTHAVEN JEDI WARRIOR JC. 6100125576 : CH. UBLONG COSMOPOLITAN CA. 5100106514

Old English Sheepdog
ABBEYFARM Mrs H Boudewyns 2M 3F 28/10/2022 AM. CH. CH. REATA'S WALK THE TALK DEZIGNER (IMP USA) DN54786403-SEM : GRAND. CH. DEZIGNER RAZE REVIEWS 2100447434

Shetland Sheepdog
ARAJENTO Mrs K C Tonkin 1M 1F 11/11/2022 ARAJENTO RAISING A RUCKUS 6100099149 : ARAJENTO SAY THE MAGIC WORD 6100107189



GLENMIRA Mrs G Hesketh 3M 2F 13/12/2022 SHATRIN BLESSED BE 4100354384 : CH. GLENMIRA DIAMOND KEEPSAKE 6100119401

NIGHTWOOD Ms D Simpson 4F 29/12/2022 CH. KILWARRIN PLAY THE GAME 4100353940 : NIGHTWOOD WINGS OF FIRE 6100129103

SUNLAND Mrs S & Ms J Van Dinter 1M 2F 01/11/2022 FIN. CH. MINITIIMIN ONE MAN SHOW FIN39814/04 : SUNLAND SUMMER WIND 6100126771

WHOAMI Miss K E Post 1M 3F 02/12/2022 CH. KILWARRIN PLAY THE GAME 4100353940 : WHOAMI LIVING THE LIFE 6100112071

Welsh Corgi (Pembroke)

LLAMCORG Mrs J Boekelman 4M 2F 02/12/2022 CH. LLAMCORG JOYS OLDRIK 6100126259 : CH. LLAMCORG KEESERS MORGANA 6100123198

White Swiss Shepherd Dog

ROSAMONTANA Mrs S Muller 3M 6F 10/12/2022 UBLONG BJORNS PRINCE O DENMARK (AI) 5100125567 : ROSAMONTANA CHINA DOLL 6100116180

ROSAMONTANA Mrs S Muller 3M 2F 06/11/2022 UBLONG BJORNS PRINCE O DENMARK (AI) 5100125567 : UBLONG VALENTINA 5100102167

ROSAMONTANA Mrs S Muller 2M 7F 22/09/2022 UBLONG BJORNS PRINCE O DENMARK (AI) 5100125567 : ROSAMONTANA HEAVENLY SCENT 6100118766

UTILITY GROUP

Akita

AMIGOZ Mr A Hartanto 1M 4F 09/11/2022 GRAND. CH. BUCKRIDGES STARS AND STRIPES (IMP USA) WS11747001-SEM : CH. SENDOSAN PROVIDENCE (IMP FRA) LOF54124/773

Bernese Mountain Dog

LUVABERNE Mr G & Mrs V J Willis 1M 14/10/2022 CONSTANT VICTORY EXELSIOR (IMP RUS) RKF5635736 : LUVABERNE FLEURS ULLA 6100107446

LUVABERNE Mr G & Mrs V J Willis 4M 4F 25/10/2022 CONSTANT VICTORY EXELSIOR (IMP RUS) RKF5635736 : LUVABERNE FLEURS URISOPRETTY 6100107447

SENNEN D J & Mrs G F May 2M 26/11/2022 SENNEN VITAL DECISION 6100123892 : CH. SENNEN JUST A BIT WICKED (AI) 6100106811

Boxer

BOKSON B J & S McKIE 2M 06/12/2022 BOKSON DONT KNOCK IT 6100101234 : BOKSON COLOUR ME BLACK 6100112404

VIANKY Ms V & Miss K Taylor 6M 5F 01/02/2023 JAKSAMLEE GRYPHON 4100339030 : VIANKY CLEO ECLIPSE 6100131669

Cane Corso

AEESTATE Mrs F Blakeney 8M 6F 14/01/2023 KABUL IL CORSO DELL'OLIMPO (IMP ITA) ROI21/7583 : MESSINA IL CORSO DELL'OLIMPO (IMP ITA) ROI21/75546

CRITICALMASS Mr C & Mrs S Lyon 3M 2F 12/01/2023 ITACOR THYRIO 2100275602-SEM : ITACOR FAITH 2100557216

PEARLANERA Mr B Thoars 1F 04/01/2023 ALLEGRETO RAGNAR 6100110961 : GUARDACOR TOVE WARRIOR QUEEN 2100505929

ROMACOR Mrs B Allen 3M 10F 07/10/2022 CH. ARMORCOR DROGO 6100093546 : ROMACOR PROSON IVY 6100115388

ROMACOR Mrs B Allen 2M 7F 18/10/2022 AWESOMISSIMO FAUSTO 4100254178 : CH. SEBPIETRO AMMO 3100392961

Dobermann

ALLDOBE Miss M A Cowin & Mrs D A Ball 1M 4F 11/11/2022 CH. WALAMARA KWYTA KONQUEST 3100426163 : CH. WALAMARA ZERO-TO INFINITY AT ALLDOBE (AI) (IMP NZL) 05952-2017

BRAVADOBE Bravadobe Dobermanns 2M 3F 24/11/2022 CH. AEGIS THE FORCE AWAKENS (AI) 6100112254 : CH. BRAVADOBE SCARLET WITCH (AI) 6100120005

CABOCHON Mrs D Ball & Mrs L Harwood 5M 3F 16/12/2022 GRAND. CH. SUP.CH. COPPERDOBE RAYZ A RIOT (AI) (IMP NZL) 07343-2018 : CH. AEGIS IVANA TINKLE (AI) 6100128043

VALKYRIAN Valkyrian Dobermanns 4M 3F 25/09/2022 CH. VALKYRIAN LUTHOR CORP (IMP USA) WS61567401 : VALKYRIAN KENT RIVER 6100120728

VALKYRIAN Valkyrian Dobermanns 3M 5F 14/11/2022 CH. VALKYRIAN LUTHOR CORP (IMP USA) WS61567401 : VALKYRIAN ISDELL RIVER 6100113156

Rottweiler

FANTASTIKROT Ms S Wightman 3M 1F 05/12/2022 CH. SAHNE BEAU MEISTER (IMP NZL) 02298-2018 : FANTASTIKROT HIT THE JACKPOT 6100127924

JAHWOHL Ms K A Richardson 6M 1F 17/11/2022 KLASIK THE PERFECT STORM 6100119681 : CH. JAHWOHL MOANING MERYTLE 6100119035

KARTRE Mrs K Curtis 1M 3F 02/11/2022 INT.CH. VDH. CH. BRUNO VOM HAUSE SCHERAU GER. BH. IPO1. (IMP DEU) ADRK125007 : ZENNHAUS VZ FALKE 3100369478

Samoyed

ESKIMOYED Miss R Wells 2M 2F 27/10/2022 AM. GR CH. BR METAK'S WALKIN' FELLA-NEE AT REXANN CGCA CGCU TKA AM. CA. AM. RN. WS57477503-SEM : ESKIMOYED THROWING TUTUS (AI) 6100118797

ESKIMOYED Miss R Wells 5M 2F 29/10/2022 SAMAYAH TO THE MOON AND BACK (AI) 3100423644 : CH. LET ME STRUT MY STUFF DE SANNA GOURSKA HIT. lof512968/0

SAMOOKA Mrs K M Micke 2M 3F 12/12/2022 CH. NORDICHARM ROYAL WIZARD 3100387518 : CH. SAMOOKA FRIDAYLICIOUS 6100116946

Schnauzer (Miniature)

ELVENSONG Ms P Cook 1M 2F 21/10/2022 QUINABBY MAVERICK 2100561827 : CH. ELVENSONG ALLISYN 6100115213

ELVENSONG Ms P Cook 3M 1F 15/10/2022 QUINABBY MAVERICK 2100561827 : ELVENSONG MADDISON 6100118819

FEICHANGKELE Ms S Guo 4M 3F 28/11/2022 KIANDOON SPORTY TIMTARCH 4100350269 : FEICHANGKELE LITTLE APPLE 6100128008

RAVENSQUILL Ms M L Howe 1M 5F 26/11/2022 RAVENSQUILL MING DYNASTY 6100104624 : BONNIEMODDEY EILIDTH IVY 4100320266

SALTYFLATS Mr T Dawes & Ms E Van Donk 4M 4F 05/12/2022 CH. SALTYFLATS PINGU NOOT NOOT 6100118236 : SILVANGLEN MARSHMALLOW 2100492296

Shiba Inu

FEICHANGKELE Ms S Guo 1M 1F 26/11/2022 HIBIKI GO KONOHANASAKUYASOU (IMP JPN) JKC-JS-06251/17-0 : MAHARG FUYUNAKA 5100119187

SHERAE Sherar Kennels 3M 22/11/2022 TAKARA GO FUJI HACHIMANSOU JKC-JS-06252/17-0 : SHERAE KANEKICHI KEIRO 6100091271

SHERAE Sherar Kennels 1M 1F 28/10/2022 TAKARA GO FUJI HACHIMANSOU JKC-JS-06252/17-0 : KANA GO KONOHANASAKUYASOU JKC-JS-06250/17-0

Siberian Husky

DENCASSTIQUE Mr S & Mrs D Case 2M 3F 02/12/2022 KOOLMOVE ICED TO PERFECTION 2100500681 : SUP.CH. KOOLMOVE WATCH ME SHINE 2100457550

DENCASSTIQUE Mr S & Mrs D Case 2M 4F 28/11/2022 DENCASSTIQUE DANCES WITHWOLVES (AI) 6100126812 : KOOLMOVE JUST LIKE FIRE (AI) 2100487387

St. Bernard

CHRYSTLEPARK Mrs V M Kenning 3M 1F 14/01/2023 CHRYSTLEPARK HOUSTON 6100116138 : CH. CHRYSTLEPARK SWEETHOME ALABAMA 6100122558

NON SPORTING DOG

British Bulldog

JAFARUT Mrs F Rutzou 2M 2F 31/08/2022 SHORTNHEAVY TYLA 7100034124 : JAFARUT ALOY OF THE NORA 6100120427

JAFARUT Mrs F Rutzou 4M 4F 03/12/2022 SHORTNHEAVY TYLA 7100034124 : JAFARUT BONNIE WEE LASSIE 6100124947

Dalmatian

CARIJLYTE Mrs L E Harris 7M 3F 06/12/2022 CARIJLYTE I AM PEGASUS (AI) 6100128531 : CH. PACEAWAY WICKED IN RED 4100308572

French Bulldog

ANVISER Mrs V & Mr A Serdiuk 1M 1F 31/07/2022 ALLEGRETO LUCIFER JIMMY 6100122470 : ANVISER PINK JASMIN 6100109502

BELLEFRENCHI Mrs G Westaway 3M 1F 04/11/2022 AVENIR PETIT CHANTEUR (AI) 4100352942 : CH. BELLEFRENCHI VIVIENNE 6100113387

BRITBULL Mr K & Mrs S Winter 2M 3F 28/12/2022 BRITBULL XENOPHILIUS LOVEGOOD 6100088250 : CH. BRITBULL TIME TURNER 6100117328

SKYWORKZ Mr S Minton 1M 1F 18/10/2022 SKYWORKZ THE END 6100125046 : SKYWORKZ PERFECT PRINCESS 6100124663

TRUIECHIEN Miss A Keaton 2M 6F 17/12/2022 ANDALIRI ALPHA TAURI 6100128421 : CRYMSON JULIET 6100126075

WHITEACRES Mrs C Whittaker 4M 2F 08/10/2022 LEMARDEM JAXS JOY (AI) 4100345533 : MOONGLADE ELSEE 4100348504

Great Dane

ALARIQUS Ms G E Hoeksema 3M 7F 24/11/2022 CH. ALARIQUS CONQUER THE WORLD 6100124258 : MULGADANE ALARICIAN VALKYRIE 2100513114

TUXDANES Miss M & Mrs A Furst 4M 2F 16/11/2022 ROSECRAN'S LARGER THAN LIFE WS59138101-SEM : CH. TUXDANES LADY LUCK (AI) 6100114833

Japanese Spitz

TOMIDACHI Mrs N Thornett 2M 1F 22/12/2022 CH. DAESDAEMAR GET THE PICTURE 2100522016 : CH. TOMIDACHI MYSTICAL PURSUIT 6100114029

Lhasa Apso

LYNOKA Mrs L Peace 2M 3F 26/12/2022 TICO H R PUFNSTUFF 2100491272 : LYNOKA UPTOWN GIRL 6100118551

Poodle (Miniature)

PUDELIAN Mrs A E M Howell 1M 2F 22/09/2022 CH. DANRITH FOCAL POINT 4100328950 : CH. FOCALAIR MUSICBOX DANCER 4100292138

Poodle (Standard)

ARTIZAN Mrs J C Ainsworth 5M 2F 27/09/2022 CH. ARTIZAN THE GREAT GADSDY (AI) 6100089422 : MISTIVALE ENCORE 6100115487

BOUFFANT Mrs G Russell & Mrs M Van Hoe 2M 4F 16/10/2022 CH. BOUFFANT IM STILL STANDING (AI) 6100124308 : CH. BOUFFANT IVE GOT THE JOY 6100121758

FIREZEYE Mrs V Parke 1M 2F 30/12/2022 AM. CH. BAR-NONE RIDING SHOTGUN (IMP USA) PR16855015 : CH. KAMSIN FAME N FORTUNE (IMP NZL) 05817-2019

SYLVENUS Mrs J Mort 6M 4F 25/12/2022 CH. TVORIMIR QUIET ACHIEVER 4100352353 : CH. SYLVENUS SINGULAR SENSATION (AI) 6100096651

Poodle (Toy)

MONPETITE Mrs J Martin 2M 20/09/2022 MONPETITE MY RED SON 6100126883 : MONPETITE HAWAIIAN GIRL 6100124168

PAQUITASTOYS Mrs S Cameron 3M 2F 29/12/2022 MONPETITE MY RED SON 6100126883 : TROPICALRED YOLANDA 4100312223

RAILSTOYZ Ms R Watson 4F 24/11/2022 CH. ARGENOR XRESSO MARTINI 4100358332 : TOYRED FIFI AT EMPORIO 2100566027

SYLVENUS Mrs J Mort 1M 1F 20/11/2022 CH. ARGENOR XRESSO MARTINI 4100358332 : CH. SYLVENUS BIG GIRLS DONT CRY 6100112555

Shih Tzu

TZUNAMI Ms L Booth 1M 3F 11/11/2022 CH. TZUPHORIA ENCHANTED DREAMS 6100123362 : CH. TZUNAMI CELESTIAL SKYE 6100109866

Xoloitzcuintle (Standard)

WAZZAT Mrs J Dinis 4M 2F 06/01/2023 TONATIUH SE12917/2018-SEM : CH. WAZZAT HORTENCIA 6100111390

EXPORTS

16/01/2023 – 15/03/2023

GUNDOG

English Springer Spaniel

CH. ESSPREE POETIC JUSTICE (Mrs J & Miss K Hiscott) Ms B Nolan NEW ZEALAND



Business & Trade Directory

airfreight - pets



SHERAE PET LINK

Colin & Shirley Chinnery
Your Pets Travel Agents to the world

29 Batterssea Road, Canning Vale
Western Australia 6155

Ph: 9455 1249

Mobile: 0410 564 326

E-mail: petlink@sherae.com.au

ADVERTISE YOUR BUSINESS HERE!

petsupplies

**Whelping Boxes
custom made.
Pine construction.**

www.whelpingboxesaustralia.com

email glen3@inet.net.au

Mobile: 0412 539 193



showribbons

**MARELLEN
SHOWRIBBONS**

All Ribbons, Sashes & Banners Vinyl
Lettering & Vinyl Signs
Prices on request

109 Silverdale Road,
Silverdale NSW2752

Ph/Fax: (02) 4774 1809

Mobile: 0419 167 260

Email:

marellen@marellenshowribbons.com

Web: marellenshowribbons.com

syntheticgrass



Green Planet
GRASS

The Pet Grass Specialists

The complete
GPG Pet Grass System
Controls Odours, Digging, Ticks &
Fleas & is easy to clean.

www.greenplanetgrass.com.au

Suppliers & Installers of Synthetic Grass

Phone: 9209 2669

For A Free Measure & Quote

trophies

**W.A TROPHIES
& GIFTS**

**TROPHIES, MEDALLIONS, BADGES,
HONOUR BOARDS & CORPORATE AWARDS**



COMPETITIVE PRICES

HAND, COMPUTER & LASER ENGRAVING
CRYSTAL, GLASS, ACRYLIC, TIMBER,
PEWTER @ SILVER GIFTWARE

**Unit 20B 12-16 Milford St
East Victoria Park 6101**

Email: sales@watrophies.com

P: 08 9470 1119 F: 08 9470 1173

vet



**FREMANTLE
ANIMAL HOSPITAL**
Dr Garnett Hall and Associates

- Family owned
- Friendly & accessible
- Excellent parking
- Vaccination packages
- Minor and major surgery
- Blood tests
- Genetic tests

info@freo.vet
08 6223 0999
www.freo.vet



FAST TRACKING SERVICE \$ 65 PER APPLICATION



Our normal services are not subject to long delays, however, we recognize that there are times when a member wishes to have a transaction processed quickly. Our **FAST TRACKING SERVICE** allows you to have your litter registration, transfer of ownership, duplicate paperwork or title application processed as a top priority.

What you have to do:

- Submit your application, ensuring all paperwork and requirements are correctly completed inc signatures, health tests etc
- Clearly mark **FAST TRACKING SERVICE** on the outside of the envelope containing your application AND on the top of the paperwork
- Provide a daytime telephone number or email address
- Pay all normal fees plus an additional \$65.00 per application. Payment will only be accepted by cash, money order or EFTPOS.

What we will do:

- Process your application as a top priority within 24 hours of receipt.
- Should your paperwork be incomplete or incorrect we will attempt to contact you to resolve. Your application will then be processed within 24 hours of all required information being corrected and received.



ALASKAN MALAMUTE

DIOMEDE	First & Best in the West	0414 595 390
WOLFPROUD	USA lines + imports enq Jenn	0430 189 095

AUSTRALIAN SHEPHERD

BORDERTON	Puppy and stud enquiries info@borderton.com.au	0407 479 522 www.borderton.com.au
------------------	---	--------------------------------------

AMERICAN STAFFORDSHIRE TERRIER

IROQ	Marion iroqamstaffs2001@gmail.com	0419 197 490
-------------	--------------------------------------	--------------

AUSTRALIAN TERRIERS

NUKAMANU	nukamanu@bigpond.net.au	9490 2186
-----------------	-------------------------	-----------

BEAGLE

SLIGRACHAN	Beagles bred for quality & temp. over 45 yrs. Tel. 9296 4846 Email: marion@sligrachan.com Web. www.sligrachan.com	Mob: 0418 945 812
MAYSTER	Maree & Brian Birkenshaw	9455 1348
TONICBAY	Nicolle Crocker	0419 931 249

BERNESE MOUNTAIN DOG

LUVABERNE	Geoff & Ronnie. All enqs welcome. luvaberne@activ8.net.au	9727 3153
SENNE	David & Gail May www.sennenbernese.com.au	0488 766 899 or 0407 766 383
BERNESE MOUNTAIN DOG CLUB OF WA INC	Breed & Club info Noela Roberts	0421 011 828

BICHON FRISE

BORDERFRISE	Lovely socialised pups	0421 344 051
--------------------	------------------------	--------------

BORDER COLLIE

NOBLESTARZZ	Health tested puppies & boarding kennels Enq through website: www.showbordercollies.com
--------------------	--

BOXER

VIANKY	Stud, Breed & Puppy enquiries Welcome vianky@bigpond.com	0417 939 652 & 0427 641 508
BOKSON	Stud puppy & breed enquires	0407 070 051

BULL TERRIER

Bull Terrier & Bull Terrier Miniature	secretarybtbtmwa@outlook.com	
Assoc of WA	secretary@btcwa.asn.au	
BULL TERRIER CLUB OF WA	secretary@btcwa.asn.au	
ALLAIDHA	allaidhabullterriers@gmail.com	0421 217 737

BULL TERRIER (MINIATURE)

STARMIN	Puppies DNA Tested	9417 1640
----------------	--------------------	-----------

CANE CORSO

CRITICALMASS	Loyal, Proof of workability, Stoic criticalmasscorsos@outlook.com Chris & Stacey	0417 785 282
---------------------	--	--------------

CAVALIER KING CHARLES SPANIEL

ELZMERE	Quality pups, stud dogs. Breed enquiries welcome. Kerry elzmercavaliers@gmail.com	0412 203 152
JANNIELO	Country Puppys Enquiries Welcome janhenning@live.com.au www.countrycavaliers.com	0428 843 032

CHIHUAHUA

WA CHIHUAHUA CLUB		0417 418 451 0407 994 351
PELISCHA	info@pelischa.com	Liz 0417 925 700

CHOW CHOW

SHERAE	Established 1973. Breeders of BIS speciality winners as well as All Breeds. We have all colours, imported dogs & lines www.sherae.com.au	9455 1249
---------------	--	-----------

COLLIE (ROUGH)

ARRANBRAE	Top class Collies	0439 777 711
BARCOO	Your family's best friend	0412 027 254

COLLIE (SMOOTH)

BARCOO	Your family's best friend in a cool coat	0412 027 254
---------------	--	--------------

DACHSHUND - SMOOTH & WIRE

LAKANUKI	Standard Smooth	08 9455 1282
TERRALONGI	Mini Smooth Hair	0422 638 804

DALMATIAN

CARILYTE	Lee Harris carilyte@upnaway.com.au	0421 062 130
WONOWON	rickylavery@bigpond.com	0439 101 222
DALHAYVIN	Enquiries are welcome! Quality bred puppies. Black and Liver spotted available	0437 171 292

DOBERMANN

THE DOBERMANN CLUB OF WA	is eager to assist aspiring owners Lifetime friends for family, working and show. www.bravadobe.com	0409 020 411 Nichole 0420 980 104
BRAVADOBE	bravadobe@outlook.com	Erin 0434 432 470
CANIS LABORIS	Dobermanns On Chelmsford. Breeding Pedigree European Dobermann	0416 004 051

FRENCH BULLDOG

THEANO	tee.zapantis@bigpond.com	0417 902 191
SENARABULL	senthil.6572@gmail.com	

GERMAN SHEPHERD DOG

GSDA of WA (Inc)	For info on German Shepherds email secretary@gsdawa.org or puppy info puppies@gsdawa.org	0406 665 411
KAPERVILLE	Quality Pups, Stud & Boarding	0404 456 197

GOLDEN RETRIEVER

KAPERVILLE	Quality pups, stud & boarding	0404 456 197
RALUN	Robyn Pierce	9284 4393

GREAT DANE

CYMROZ	Enq www.cymrozgreatdanes.com	MJ 0419 944 722
---------------	------------------------------	-----------------

GRIFFON BRUXELLOIS

BOKSON	Stud-pup-breed enq. Brian/Sue	0407 070 051
---------------	-------------------------------	--------------

IRISH WOLFHOUND

CUMOCROI	cumocroi@yahoo.com.au	0406 195 555
-----------------	-----------------------	--------------

HUNGARIAN VISZLA

HUBERTUS	www.hubertus.com.au	0402 272 489
-----------------	---------------------	--------------

KEESHOND

ARRANBRAE	For top class Keeshonds	0439 777 711
------------------	-------------------------	--------------

LABRADOR RETRIEVER

BLACKBOY	Multipurpose Labradors. www.blackboykennels.com.au	9490 5641
RONDELAY	Puppy & Stud enquiries welcome	9279 1492
BALLINGAR	Multi purpose labradors www.ballingarlabs.com.au	9764 1030
CINDERSET	Enquiries welcome. Gill Carroll	08 6392 8072
CELABRATION	Rebecca 0428 102 084 Alana 0419 685 684	
TOBELA	Puppy & Stud enq.	0413 862 375 or 9277 8701
YRLYLAB	For quality pups & stud www.labrador-breeder.com	9731 2157
GOLDENGIRLS	Black, yellow, chocolate pups	9295 5222
CARNABYACRES	Chocolate and Black Pups	0427 296 838
KARRIMELAB	Puppy Enquiries Welcome	0438 304 534
BAYDRIFT	Quality Yellow Pups & Stud Dogs jgre6549@bigpond.net.au	0414 739 123
YRLYLAB	Jarrahgum Labradorts labpups@westnet.com.au	0421 379 933 www.labrador-breeder.com

MALTESE

ALRICH	www.alrichmaltese.com enq Pauline	0438 771 470
---------------	--------------------------------------	--------------

POODLE

PUDELIAN	Devoted to the breed. Black, Brown minis. info@pudelian.com.au	9398 4725
SHEPHAUS	Mins type & temperament	9622 2756 / 0417 983 676
SYLVENUS	Breed enquiries www.sylvenus.com	0418 918 225

POMERANIAN

AVENTURA	Puppy Enquiries Welcome	0438 901 073
-----------------	-------------------------	--------------

ROTTWEILER

GELDERLAND	rotties@upnaway.com	0418 940 471
DOMROSCHEN	Natural Bobtails enquiries@domroschenrottweilers.com.au	0417 911 465

SAMOYED

SAMOOKA	Quality UK lines	kylene@iinet.net.au
----------------	------------------	---------------------

SCHNAUZER, MINIATURE

ELVENSONG	ancoo@iinet.net.au	0439 514 110
------------------	--------------------	--------------

SHIBA INU

SHERAE	Home to Japanese imports & show winning stock overseas & Aust. wide. www.sherae.com.au	9455 1249
---------------	--	-----------

The details listed in the Breeder's Directory are authorised for publication by the members concerned. The Canine Association of WA offers no warranty of any kind in relation to the standard of any dog offered for sale by a Breeder or as to the reputation or skill of any Breeder.

A Certificate of Registration is an extract of the details shown in the Registers of the CAWA, it is not a guarantee as to the quality of the dog named thereon.



ST BERNARD

NYRANDA Sound versatile Saints for companion, obedience, conformation. All dogs hip & elbow scored, DNA reg. nyranda@bigpond.com or 0409 646 401

CHRYSTLEPARK Est 1985 Sound Quality Dogs
Breed or Puppy enquiries Ph Val 0412 626 431

STAFFORDSHIRE BULL TERRIER

THEJAK Maxine kajeht@yahoo.com

TENTERFIELD TERRIER

DOUBLEG G & G Fulton 94979953
doubleg@iprimus.com.au

WEIMARANER

GHOSTWIND Breeders and exhibitors of quality Weimaraners 0414 277 493
www.ghostwindweimaraners.com

WELSH CORGI, CARDIGAN

CARDIWEST Jim & Lynn www.cardiwest.com 9398 8698

WELSH CORGI, PEMBROKE

WESTEND Sandra Lippiatt 0487 682 555

CYMTARAN Cymtaran Corgies 0427 239 049
cymtarancorgies@westnet.com.au

WEST HIGHLAND WHITE TERRIER

MACARAN Enquiries Daphne 9527 3674

SYLVENUS Breed enquiries. 0418 918 225
www.sylvenus.com

NUKANMANU Enquiries - Margaret 9490 2186



Code of Ethics

HM MEMBERS' CODE OF ETHICS
(latest amendment March 2023)

HM1 ACKNOWLEDGMENT

Each person, when signing an application for membership or renewal of membership of the Canine Association of Western Australia agrees to the following:

- to be bound by the ANKC Ltd regulations and rules
 - to be bound by the Constitution, Rules and Regulations of the Association
 - to be bound by the Association's Code of Ethics
 - To allow the inspection of the member's premises as required for the purpose of investigating compliance with the regulations and the code of ethics. **04/17**
- 1.2 Each member by signing any document shall be certifying that the information contained therein is true and correct.
- 1.3 A Member shall not forge, falsify or misrepresent the signature of another Member or person on any document relating to the activities of Dogs West or the Australian National Kennel Council Ltd. **(05/21)**

HM2 CODE OF CONDUCT

- 2.1 A member shall not knowingly or recklessly misrepresent the ANKC or the member's Member Body.
- 2.2 A member shall not engage in any behaviour that is contrary to the standards accepted by the community.
Members and others defined in HM2.3 will not engage in bullying or harassing or unacceptable behaviours towards other members, staff, volunteers or contractors or disorderly conduct.
- Bullying is defined as repeated inappropriate behaviour direct or indirect, whether verbal, gesture, physical or otherwise, conducted by one person or persons against another person or persons.
This includes, but is not limited to:
 - Cyber bullying – placing an offensive or hurtful public message, image or statement on a social network site or other public forum where that message, image or statement can be viewed and/or repeated by other people will be regarded as bullying behaviour.
 - Unacceptable behaviour is defined as any behaviour that a reasonable person, having regard for the circumstances, would see as victimising, humiliating, undermining or threatening.
 - Disorderly conduct is defined as disturbing the peace or endangering the morals, health or safety of others. **(07/15)**
- 2.3 Members shall be responsible for any and all actions by themselves, their family members or guests when attending sanctioned events and their interactions with other members at all times.
This includes but is not limited to:
 - Littering
 - Damage
 - Unacceptable behaviour
 - Bullying
- 2.4 A member shall not indulge in false or misleading advertising relating to the conformation, characteristics or performance of that member's dog.
- 2.5 A member shall not misrepresent nor malign the conformation, characteristics or performance of another member's dog.
- 2.6 A member shall at all times and in all forums, including at DogsWest approved events, in dealings in wider forums including chat lists on the internet and in all other communications, conduct themselves in a manner respectful of the reputation of the ANKC and DogsWest members, judges, staff and officials. **08/11**

- 2.7 An exhibitor is not to contact a judge after the announcement of that judge's appointment by any means that may be interpreted as promoting that exhibitor or exhibitor's exhibits. This includes social networking sites, email, and all electronic forms of communication as well as traditional forms of communication. Should a judge receive such an approach, they are required to make a report to the appropriate member body and disciplinary action may be taken against the exhibitor. **08/11**
- 2.8 Members shall constantly strive to improve their knowledge of their chosen breed or breeds, and their knowledge of the requirements for the care, welfare and betterment of dogs.
- 2.9 Members shall ensure that all dogs under their control are properly controlled, housed, fed, watered, exercised and receive veterinary care as and when required. A member shall not knowingly allow any dogs under their care to roam at large.
- 2.10 A member shall permit any person authorised in writing by the Administrative Officer, following a resolution of the Governing Council, to enter and inspect any premises owned or occupied by the member for the purpose of investigating compliance with HM2.9 of this Code. 2.10.1
During the conduct of the inspection the member will permit the authorised person to record any necessary details by tape, video or photographs.
2.10.2 Failure to permit the inspection of the premises without reasonable cause shall result in suspension of the member's privileges until that inspection has taken place. **(04/17)w**
- 2.11 The registered owner of a dog shall remain ultimately responsible for said dog, including if left in the care of another person.
- 2.12 A member shall take all appropriate lawful measures to assist a dog in distress.
- 2.13 A member shall positively enhance the reputation of dog breeders and owners by ensuring that dogs owned by the member are not a danger or nuisance to the community.
When the dog is away from home a member shall ensure that it is kept on a leash and/or effective control at all times.
- 2.14 A member shall not participate in nor support any activity that involves cruelty or damage to animals, excluding legal hunting activities.
- 2.15 A member shall not dispose of dogs owned or bred by the member to a pound or animal refuge. Breed Rescue Clubs run by ANKC Ltd members are exempt. **(04/20)**
- 2.16 A member shall display good sportsmanship and conduct at all times so as to reflect credit upon themselves, the ANKC Ltd and the member's Member Body. **(08/22)**
- 2.17 A member shall at all times comply with all relevant consumer laws and regulations, both State and Federal. **(08/22) (03/23)**

BREEDING

- 2.18 A member shall breed primarily for the purpose of improving the quality and / or working ability of the breed in accordance with the breed standard, and not specifically for the pet or commercial market. A member retains the right of free trade, to advertise directly and sell dogs not kept for line maintenance purposes by that member.
- 2.19 A member shall not breed with a bitch unless the bitch has reached adequate maturity for that breed as determined by the member's Member Body. The minimum breeding age for bitches across all breeds is twelve (12) months at the time of mating. Except in extenuating circumstances or with the approval of Governing Council prior to the mating, a member shall not breed from any bitch causing it to be mated before it is twelve months of age. **(08/14)**
- 2.20 A member shall not breed a bitch causing it to whelp **more than twice in any eighteen month period (11/22)**



- 2.21 Number of Litters
- 2.21.1 A member shall not breed a bitch causing it to whelp more than five (5) times.
- 2.21.2 It is the responsibility of the current registered owner to verify the number of litters a bitch may have had prior to their ownership of said bitch. **(2/23)**
- 2.22 Maximum Breeding Age
- 2.22.1 A member shall not mate a bitch over the age of seven (7) years.
Note: after the bitch's seventh birthday. **(07/18)**
- 2.22.2 Extenuating Circumstances
- 2.22.2.1 A member may apply to Dogs West for permission to mate a bitch over seven years of age. The application is to include:
- a veterinary certification of fitness for further breeding issued in the last **30** days
 - the positive identification of the bitch – microchip
 - reasons for the need for a litter from a bitch of this age
- 2.22.2.2 The member must have obtained written permission PRIOR to mating the bitch
- 2.22.2.3 The permission is valid for a period of six months – after this permission must be re-applied for.
- 2.22.2.4 Under no circumstances will permission for a further litter be granted. **(04/17) (11/22)**
- 2.23 First generation (father/daughter, mother/son, brother/sister) matings are not permitted. ANKC Ltd Member Bodies will not register the progeny of father/daughter, mother/son, brother/sister matings on the Main Register unless application was made to the Member Body and approval was given prior to the mating on the basis of health or genetic reasons to the benefit of the breed.
Any breach of this regulation will constitute an offence by the member(s) who are the owners of the sire and the dam of the litter.
The progeny resulting from such a breach will be registered on the Limited Register and endorsed 'never to be upgraded' and any further penalties as may be determined by the member's Member Body. Refer ANKC Part 6 – 8.4 **(10/10) (12/14)**
- 2.24 A member shall not permit any of that members' ANKC Pure Bred Registered dogs, without prior approval from the Association, to be used in any mating which would result in a litter being ineligible for registration on the ANKC Register. This includes
- 2.24.1 To a dog of a different breed
- 2.24.2 To a cross bred dog
- 2.24.3 to a non ANKC registered dog of the same breed or
- 2.24.4 to a dog not on the ANKC Main Register
- 2.24.5 a mating not in compliance with R2.1. **(04/21)**
- 2.25 Breaches of Regulations 2.18, 2.19, 2.20, 2.21 and 2.22 are considered to be a serious breach of the Code of Ethics. For that reason, offences in relation to each of the separate regulations will be considered cumulatively in applying penalties to the Registered Breeder/Member.
Any puppies not registered on the Main Register are to be registered on the Limited Register with the endorsement 'Not to be upgraded to Main register'. **(08/11) (04/13)**
- 2.26 A member shall take responsible action to reduce the incidence of hereditary diseases in accordance with the ANKC Code of Practice for Hereditary Diseases.
- 2.27 A member shall not, within Australia, sell or otherwise transfer from that member's care any puppy under eight [8] weeks of age without the approval of the member's Member Body.
Puppies are to be microchipped and vaccinated prior to leaving the Member's care.
- 2.28 A member shall not export a puppy under the age of eleven [11] weeks, or such greater age permitted under the livestock import requirements of the country to which the puppy is being exported.
- 2.29 A member shall not knowingly sell a dog to any person residing in an overseas country known to be involved in the utilisation of dogs for the meat trade without first satisfying the member's Member Body that the purchaser is a member of an ANKC recognised canine controlling body in the overseas country. The member and purchaser must further acknowledge in writing to the member's Member Body that the intention of the sale is for the improvement of the quality of that breed in the overseas country, and not for any other purpose.
- 2.30 A member shall ensure that persons acquiring dogs from that member understand the requirements for the care, welfare and responsible ownership of the dog, and that they have the time and facilities, e.g. adequate fences, sufficient room and proper shelter, to fulfil their responsibilities.
- 2.31 A breeder shall be expected to maintain reasonable contact with the purchasers of dogs from that breeder and to offer continued advice and reasonable assistance.
- 2.32 A member **must** register all puppies bred by that member that are living at the date of registration. Such registration must include all living puppies from the litter on the one litter registration application form and must be applied for within six [6] months of the date of whelping.
- 2.33 A member shall provide to all recipients of dogs sold or otherwise disposed of by that member, written details of:
- 2.33.1 The breed characteristics;
- 2.33.2 Current Vaccination certificate signed by a Veterinary Surgeon evidencing that the dog has been immunised against Canine Distemper, Hepatitis and Parvo Virus
- 2.33.3 Microchip number verification – transfer is the responsibility of the vendor in accordance with R19.
- 2.33.4 Responsible dog ownership information; and
- 2.33.5 All documentation required by the member's Member Body, including-
- 2.33.5.1 a written receipt clearly stating whether, in accordance with R11.1, the dog is to be transferred to the purchaser or a Non-Transfer Agreement executed. **(05/22)**
- 2.33.5.2 any other conditions of sale and/or agreements **(04/17)**
- 2.34 A member shall not incorrectly describe nor knowingly misrepresent the characteristics of a breed.
- 2.35 A member shall ensure that all dogs sold or disposed of by that member are in the best possible state of health. Where a dog with a health issue or disability is disposed of the member must obtain from the recipient written and signed acknowledgement of the condition of the dog.
- 2.36 A member shall not:
- 2.36.1 Sell or dispose of a dog to a commercial pet wholesaler or retail pet shop. Nor shall a member's dog/s be advertised, displayed or sold on commission by a commercial dog wholesaler or retail pet dealer. **(07/15)**
- 2.36.2 Allow a dog owned by that member to be given as a prize or donation or to be auctioned.
- GENERAL**
- 2.37 A member who provides or makes available a dog for use in a film, advertisement, promotion, or any media or public display must ensure that:
- 2.37.1 The dog is portrayed in a manner consistent with its breed characteristics and temperament as described in the Standard for that breed; and
- 2.37.2 The dog is presented in a manner that is unlikely to create a negative reaction to dogs generally or that breed in particular and that if there is any likelihood of a negative impression, this is at the same time corrected through the development of a story line that presents the dog or breed in a balanced manner.
- 2.38 A member shall oppose all activities which involve cruelty to dogs or in which dogs inflict damage on other dogs or other animals excluding the hunting of vermin.
- 2.39 A breeder must include their ANKC Ltd Member Body Membership Number in any advertisement for puppies whatever the media and all members must include the following wording in their advertisements:
"Please contact Dogs West on email: k9@dogswest.com to verify my membership."
- 2.40 A member shall not use or cause to be displayed, in any form or in any media, their Dogs West membership number in relation to any progeny, real or planned, from a dog not on the ANKC MAIN register. **(06/20)**
- 2.41 A member shall not declare, make or infer any relationship, in any form or in any media, between their membership of The Association, The Association and any dog not eligible for entry onto an ANKC register. **(06/20)**



ADMINISTRATION LEVY per entry on all entries

Sanctioned Events - (excluding Open Shows).....	\$2.50
Sanctioned Events - Open Shows.....	\$0.00
Country Club Events (ie: Clubs more than 100kms from Perth GPO).....	\$0.60
INSURANCE LEVY on ALL Entries.....	\$0.40

AFFILIATION FEES

All Breeds Clubs.....	\$200.00
Group Clubs.....	\$70.00
Single / Multi Breed Club.....	\$50.00
Associate Affiliate - (Performance Club).....	\$200.00
Other Discipline Club (DWD, Field, Herding, Lure & Tracking).....	\$50.00
Country Club (ie: Clubs more than 100kms from Perth GPO).....	\$150.00

CANINE NEWS ADVERTISING

MEMBERS ONLY	Mono	Colour
Front Cover Colour.....	N/A	\$350.00
Applause or Vale (1/6 page).....	\$54.00	\$74.00
Breeders Directory - Per Line.....	\$54.00	N/A
Breeders Directory - Website Link.....	\$54.00	N/A

Rates (Members - 10% discount)

Back Outside Cover.....	N/A	\$755.00
Inside Front Cover - Full Page.....	N/A	\$685.00
Inside Front Cover - Half Page.....	N/A	\$377.00
Inside Back Cover - Full Page.....	N/A	\$604.00
Inside Back Cover - Half Page.....	N/A	\$345.00
2 Page Spread.....	N/A	\$1057.00
Full Page.....	\$334.00	\$550.00
Half Page.....	\$216.00	\$324.00
Third Page.....	\$167.00	\$216.00
Quarter Page.....	\$129.00	\$173.00
Business & Trade (12 months = 6 issues).....	\$226.00	N/A

Club Schedules Third of a page per event	Champ	Open
All Breeds & Agricultural Society.....	\$290.00	\$120.00
Group All Breeds.....	\$155.00	\$98.00
Country Clubs.....	\$75.00	\$40.00
Breed & Multi Breed.....	\$125.00	\$65.00
Single/ Multi Breed / Event Advice.....	\$40.00	\$30.00
Agility & Obedience.....	\$87.00	N/A
Country - Agility & Obedience.....	\$75.00	N/A
National Show Advice.....	\$55.00	N/A
Additional Space per Schedule		
Full Page (All Breeds / Group).....	\$430.00	N/A
Full Page (Multi / Breed / Performance).....	\$250.00	N/A
Two Thirds Page (All Breeds / Group).....	\$350.00	N/A
Two Thirds Page (Multi / Breed / Performance).....	\$150.00	N/A
Late fee (not received 4 months prior to event).....	\$100.00	

2 events in Third page-relevant charge + 50%

FACILITIES HIRE FEES (Double for Non Members)

Meeting Room Hire - AGM (only if Members Lounge utilised).....	\$65.00
Meeting Room Hire - Meetings (incl AGM).....	\$38.00
Lower Arena Clubhouse - Day Rate.....	\$120.00
Members Lounge (\$200 refundable bond payable).....	\$200.00
Ground Hire for Group / Club Training - first 2 hours.....	\$15.00
per hour or part thereof thereafter (daylight hours).....	\$8.00
Club Social Events (i.e. Contest of Winners etc.) - All Breeds.....	\$400.00
- Group Clubs.....	\$200.00

EQUIPMENT HIRE

Ring Trellis per panel.....	\$5.00
Timing Gates.....	\$20.00
Arch.....	\$15.00
Rally O equipment.....	\$15.00

LIGHTING

GROUND LIGHTING	
Main Arena (per pole per hour or part thereof).....	\$30.00
Lower Arena (per pole per hour or part thereof).....	\$57.00
Lower Arena (two poles per hour or part thereof).....	\$93.00
PAVILION LIGHTING (Per bank per hour or part thereof).....	\$22.00

Note: Double for Private Groups or Unaffiliated Clubs

SANCTIONED EVENTS PER DAY or NIGHT

All Breeds Championship Shows: Main Arena or Pavilion.....	\$286.00
All Breeds Open Show/Trials: Main Arena or Pavilion.....	\$146.00
Group / Multi Breed Shows: Main Arena or Pavilion.....	\$86.00
Single Breed Shows: Main Arena or Pavilion.....	\$58.00

LICENCES

Judges Licence Fees - Panel (All Disciplines).....	\$71.00
Aspiring / Trainee (All Disciplines).....	\$71.00
All Trainee Judges - Conformation, Agility, Obed - Practical.....	\$44.00
Theory.....	\$22.00
- Other Disciplines - Practical.....	\$22.00
Theory.....	\$11.00
Late renewal fee.....	\$30.00
Late Application.....	\$100.00
Exporter Licence.....	\$445.00
Agricultural Show Licence.....	\$300.00

LITTER REGISTRATIONS

Puppy Registrations (per dog) Main Register (Includes ANKC Levy \$1.50).....	\$50.00
Puppy Registrations (per dog) Limited Register (Includes ANKC Levy \$1.50).....	\$50.00
Penalty - After four calendar months.....	
- per pup per month or part thereof.....	\$30.00

TRANSFERS

Main Register (per dog).....	\$40.00
Limited Register (per dog) / Associate.....	\$40.00
Non-Transfer Agreement.....	\$40.00
Late - After 90 days, per month or part thereof.....	\$30.00
Transfers between Registers.....	\$40.00
Frozen Semen Transfer.....	\$40.00
Lease - within 60 days of commencement.....	\$80.00
Lease - after 60 days from date of transfer.....	\$140.00
Lease - Early Cancellation.....	\$40.00
Neuter Certificate and Registration.....	\$15.00

MEMBERSHIPS

Establishment fee (on all memberships except Juniors and Handlers).....	\$50.00
SUBSCRIPTION (Includes Development Levy)	
Ordinary Single.....	\$122.00
Ordinary Double.....	\$171.00
Associate Single.....	\$88.00
Associate Double.....	\$130.00
Country Single.....	\$78.00
Country Double.....	\$117.00
Pensioner Single.....	\$59.00
Pensioner Double.....	\$84.00
Junior without Canine News.....	\$17.00
Junior with Canine News.....	\$62.00
Subscription Only.....	\$50.00
Overseas subscription only fee plus postage	
Handlers under 18 years of age.....	\$17.00
Handlers over 18 years of age.....	\$56.00
Social.....	\$11.00
Late fee after 60 days.....	\$30.00

MISCELLANEOUS

Amenities Show - Entry fee.....	\$11.00
- Entry fee - Baby class.....	\$5.00
Dishonour cheque fee.....	\$20.00
Duplicate Membership Card.....	\$12.00
Duplicate or Updated Certificate of Registration.....	\$32.00
Export Pedigree (inc. ANKC levy \$10.00).....	\$155.00
Fast Tracking Fee.....	\$65.00
Five Generation Pedigree.....	\$72.00
Incorrect Paperwork Fee.....	\$30.00
Non Breeding Agreement - Cancellation.....	\$40.00
Notice of Intent to Appeal (Regulation A76).....	\$82.00
Research & Handling Fee minimum.....	\$93.00
- per hour or part thereof thereafter.....	\$62.00
Professional User Fee.....	\$165.00

PREFIXES

Prefix Application.....	\$250.00
Renewal.....	\$60.00
Transfer.....	\$110.00
Protection Fee.....	\$250.00

REGISTRATIONS

Associate Dog Registration.....	\$50.00
Frozen Semen Registration.....	\$50.00
Frozen Semen Registration - additional late fee after 18 months	\$30.00
Re-registration (imported dogs / semen).....	\$105.00
Re-registration (Australia bred dog / semen).....	\$52.00

STATIONERY - (plus postage)

Best of Breed or Challenge Certificates each.....	\$0.50
Canine News per copy.....	\$5.00
Entry Forms - per 100 or part thereof (plus \$3.75 postage).....	\$9.00

TITLE APPLICATIONS

Australian Champion (Includes Breeders Certificate if requested).....	\$32.00
Australian Champion Breeders Certificate.....	\$12.00
Supreme/Grand Champion (Includes Breeders Certificate if requested).....	\$32.00
Other Titles or Certificates.....	\$32.00
Multiplier cert.....	\$12.00

THAT'S A EUKANUBA™ DOG.

Eukanuba™



Unleash the extraordinary in your dog



For over 50 years, we've used the power of nutritional science to help fuel dogs' athletic abilities and unleash their full potential.

Whether your dog is a show dog, used for breeding, a working professional or a family companion, body condition, nutrition and the environment will influence health and performance throughout their lifetime.

We're driven by the idea that nutrition, dogs' lives and performance can always be improved. That's often meant our formulas have broken new ground. Innovation is in our DNA, were the first to use beet pulp and key prebiotics to help optimise digestion, the first to identify specific levels of omega-6 and omega-3 fatty acids to help support skin and coat health and we created an antioxidant blend to support immune function and post-exercise recovery. The list of breakthroughs goes on — and our commitment to making the best performance nutrition will as well.

15% OFF SELECTED EUKANUBA™ ADULT DIETS*

Enjoy this and other exclusive promotions when you join the Eukanuba™ Professional Club. To sign up visit our website: eukanuba.com/au

*Only available at the Eukanuba WebShop (webshop.eukanuba.com), 1st April to 31st May 2023. Offer includes Small, Medium and Large Breed Adult Dry Diets. 15kg order minimum.



SHERAE PETLINK

Your Pets Travel Agent to the World

OUR CARING TEAM OFFERS A PROFESSIONAL SERVICE FOR ALL ASPECTS OF YOUR PETS TRAVEL



Sherae Petlink can relocate your pet:

- Internationally
- Interstate
- Within regional W.A. and the metro area



Sherae Petlink services include:

- Pet travel crates for sale or hire
- A metropolitan and country PET TAXI service (Specialised, fully airconditioned vehicles)
- Modern pet boarding facilities



Sherae Petlink is

- A local family business; has been established since 1975
- A member of Australian and International pet transport networks
- A regulated agent of DOTARS



Our caring team at Sherae Petlink know that your pet is not just a pet, it is a member of your family.

Colin, Shirley and Colin Dennis Chinnery
29 Batterssea Road, Canning Vale, Western Australia 6155
t: (08) 9455 1249 m: 0410 564 326 f: (08) 9455 2594
e: petlink@sherae.com.au w: www.sherae.com.au